

# NORTH WEST CITY NEWS

northwestcitynews.com.au

Forever Free

Puzzles & Trivia P22



**Cooking up a storm!** After two years of stop-start lockdowns, young chefs at North Melbourne Primary School are back in the kitchen using delicious and healthy ingredients – and they couldn’t be more excited. *Continued on page 8.*  
*Photo by Brendan Rees*

## Boom gate “nightmare” sparks commuter fury on Macaulay Rd

*Residents and traders in Kensington have told of their increasing frustration caused by the Macaulay Rd level crossings, with traffic hold-ups being described as an “absolute nightmare”.*

WORDS BY *Brendan Rees*  
TRANSPORT

With a federal and state election looming, many want to see the Bellair St crossing prioritised for removal as fears grow delays would only become worse as the Craigieburn line gets busier in the coming years.

“I’ve lived here all my life, the traffic has got out of hand in the past 15 to 20 years,” Paul, a Kensington resident and local trader, said.

“There are just too many trains coming through here. You could be stuck there for 20 minutes because you get the local trains and country trains.”

Another local worker, Malene Knudsen, said she got stuck at the level crossing every day.

“It’s just crazy traffic. It feels like there’s a train coming every 30 seconds in the morning – it’s bad.”

Chris, a local business owner, who asked not to use his surname, said it was a “bloody nightmare” with the level crossing being “one of the worst I’ve come across in Melbourne”.

However, while there are no plans to remove the level crossing at this stage, any future solution has been met with concern that it would only add to current traffic woes.

The community has also expressed concerns that traffic chaos was also being exacerbated by the level crossing at Macaulay Station, about 550 metres further down Macaulay Rd,

which services the Upfield line.

According to Simon Harvey, president of the Kensington Residents’ Association, if the boom gates at the Macaulay Rd/Bellair St intersection were to go it would “encourage more and more motorists to use it as the throughway.”

“The best option is to keep Macaulay Rd slow, pedestrian friendly, bicycle friendly, and everything just slows that down, so it doesn’t encourage motorists to use it as a main artery of access to the city,” he said.

“It’s an issue and a very, very difficult one – that’s why I call it the ‘Macaulay dilemma’.”

This sentiment was also shared by Kensington resident and City of Melbourne councillor Rohan Lepert, who said “removing both level crossings on Macaulay Rd would induce through-traffic and create worse conditions for local residents” and see the heritage Kensington Station, which dates back to the 1860s, “demolished” and “replaced”.

“The Craigieburn line level crossing in particular cannot be removed without turning our beloved local shopping strip into a hostile environment for pedestrians, and demolishing and replacing Kensington Station,” he said.

“I know it’s counter-intuitive, but the capacity of the local traffic network is determined by the three major signalised intersections on

*Continued on page 3.*

## “I love them”: businesses express support for Errol St greening

WORDS BY *Spencer Fowler Steen*  
COUNCIL AFFAIRS

Many Errol St retailers support new street greening and seating measures recently introduced to North Melbourne, with some suggesting possible improvements and additional initiatives to enhance Errol St’s “village” feel.

The City of Melbourne (CoM) in partnership with the North and West Melbourne Precinct Association (NWM-PA) is trialling 25 native trees with understorey grasses in 1.3-metre moveable, concrete planter boxes, as well as four bench seating areas.

The council and NWM-PA will collect feedback and consider permanent greening and activation solutions for Errol St.

Asked what she thought of the new planter boxes and seats, which add to Errol St’s outdoor dining parklets, Casa

Verde Flowers owner Sarah Mellier said they improved the street.

“I love them!” she said.

“It adds to the feel of Errol St being a village and everyone loves plants. It just makes a scungy street look better.” “This is a good suburb with a busy shopping strip. There’s nothing flash done here, so to put something like that here looks like finally someone’s made some effort, and I’m devastated to learn that they’re not permanent.”

Snax Café owner Kim Tran said the planter boxes and the seats were “very good”.

“They make the street better and add more safety,” she said.

“I think Errol St needs more trees, because in North Melbourne it’s very empty at the moment. We need things that will bring people back.”

*Continued on page 2.*

COMMUNITY, PAGE 05  
**A** Royal Mail Hotel up for sale



EDUCATION, PAGE 07  
**B** St Michael’s building its way to “first choice”



COUNCIL AFFAIRS, PAGES 08-09  
**C** Council meets in West Melbourne



EVENTS, PAGE 11  
**D** Comedy Festival returns



We Know The Local Market

For a clear path to success

Kylie 0417 960 492

Simone 0447 022 266

Trevor 0456 377 780

**Biggin & Scott**  
KENSINGTON







# Boom gate “nightmare” sparks commuter fury on Macaulay Rd

Continued from page 1.

Macaulay Rd more than the level crossings, and so removing one or both of the level crossings is no panacea.” Restaurant owner Rick Sciberras, who runs Rick’s Place on Macaulay Rd, agreed, saying he would like to see both level crossings gone but “by the same token, closing down Macaulay Rd would cause a lot of disruption.”

“The issue for business is yes, we would like to see the back of them, but if they have to close the road in order to do so then that’s going to be a major issue,” he said.

Public Transport Users’ Association spokesperson Daniel Bowen said a 2008 assessment revealed the crossing at Kensington Station was “the highest ranked that has not been removed.”

“Apart from crossing removals improving safety and cutting delays, stations that are newly rebuilt as part of these projects help improve amenity and accessibility for train passengers,” he said.

Greens state MP for Melbourne Ellen Sandell said the state government “definitely needs to invest in more ways to reduce traffic in Kensington and help everyone get around easily, but we need to make sure that any solution does not demolish or destroy any of the beautiful heritage shops, station or homes around Kensington Station.”

“We also need to make sure any solution doesn’t encourage more cars and especially trucks coming from the western suburbs onto Kensington streets,” she said.

“The heritage ‘village atmosphere’ makes Kensington such a special place to live and we don’t want to compromise that in any way.”

Kevin Devlin, chief executive officer of the Level Crossing Removal Project, said while “we’d love to remove every level crossing that remains”, it was focused on getting rid of the 85 level crossings the state government had committed to removing.

Cr Leppert said through the Macaulay Structure Plan, it was the council’s policy to support the removal of the Upfield line level crossing in future “to improve connectivity for everyone”.

“I support this aim, while remaining cautious about the precedent that might be set for the Craigieburn line, which I reckon we should continue to treat as a ‘necessary



▲ The level crossing at Kensington Station is the “highest ranked that has not been removed.”

evil,” he said.

Kaye Oddie, a North Melbourne resident, and member of the Friends of Moonee Ponds Creek said any proposal to remove the Macaulay Rd level crossing on the Upfield line would present “huge engineering issues”.

These included consideration of the City Link overpass and the flood plain area of the Moonee Ponds Creek, as well as addressing climate change issues and rising sea levels, she said.

The Victorian Liberal Party was contacted for comment but did not respond before deadline ●

# Drivers advised to use detours as major works take shape in West Melbourne

WORDS BY *Brendan Rees*  
TRANSPORT

The Department of Transport says it continues to monitor traffic flows along Macaulay Rd in Kensington while detours remain in place to accommodate several projects in West Melbourne.

It comes as concerns were raised that a rising number of trucks had been frequenting the busy road.

As part of the West Gate Tunnel project, traffic has been advised to detour using Footscray Rd via Dudley St as works get underway for a new walking and cycling path alongside Dynon Rd.

Construction has resulted in a “number of unavoidable closures” along Dynon Rd westbound while crews remove the concrete median, with the department saying some trucks may need to use Macaulay Rd because of the low bridge on Dudley St.

The Dynon Rd rail bridge across Moonee Ponds Creek is also being upgraded with works expected to be completed in late March.

Traffic has been advised to avoid Dynon Rd and take alternative route detours along Footscray Rd, Racecourse Rd, Macaulay Rd, and Kensington Rd, however, trucks and over-height vehicles cannot use Racecourse Rd due to the low bridge clearance.

“All detour routes are temporary and designed to create minimal disruption to motorists, local businesses, residents, and crews on site,” the department said.

“They are decided in consultation with many key stakeholders,

“

*Construction has resulted in a “number of unavoidable closures” along Dynon Rd.*

”

including major project authorities, the Department of Transport, and the local council.”

“We regularly monitor traffic flow along approved detour routes. These routes are decided based on various factors, including the road environment, infrastructure, and pedestrian access.”

“Of drivers using Macaulay Rd each day, just seven per cent are trucks or heavy vehicles.”

According to data from the department, there have been 19 collisions on Macaulay Rd between Epsom Rd and Macaulay Station over the five years to June 30, 2021, with seven resulting in serious injury, however, none had involved trucks.

A Department of Transport spokesperson thanked the community for its patience while the works were underway.

“We’re building the road infrastructure Victorians need to get around today and for the future, with direct benefits for people living in West Melbourne, including improving vital connections into the CBD,” the spokesperson said ●



## WE GET THE BEST OUT OF OUR BOYS

*One Campus*

### FROM 2023

Simonds Catholic College is a small school with big opportunities in the heart of the city. Our teachers are **experts in teaching the way boys learn best**. We are committed to small class sizes to ensure your son will receive the attention he requires to achieve his personal best.

## YEAR 7 2023 & 2024 APPLICATIONS OPEN

9321 9200  
273 Victoria St, West Melbourne [2 blocks from Queen Vic Market]  
[www.sccmelb.catholic.edu.au](http://www.sccmelb.catholic.edu.au) [info@sccmelb.catholic.edu.au](mailto:info@sccmelb.catholic.edu.au)





### FOLLOW US ON INSTAGRAM



SIMONDS\_CATHOLIC\_COLLEGE



Following our acquisition of a multi storey building on Chetwynd St and the completion of refurbishment of existing areas, we are thrilled to announce that SIMONDS CATHOLIC COLLEGE will become **ONE SCHOOL ON ONE CAMPUS**. By 2023 all students across Year 7-12 will be based at our West Melbourne site **in the heart of the city**.



ADVERTISEMENT  
Your City of Melbourne community update

# REPORT GRAFFITI AND STREET WASTE ONLINE



Our Rapid Response Clean Team helps make the city sparkle

The City of Melbourne is proud to launch the Clean Melbourne Graffiti Blitz on Clean Up Australia Day.

Over a fortnight from 6 March, our Rapid Response Clean Team will move through the CBD and city gateways, removing graffiti tagging.

The graffiti clean-up will then move across the municipality to our neighbourhoods, to ensure Melbourne is clean, inviting and looking its best to support the city's recovery.

### Easy online reporting

City officers are always on the lookout for litterbugs and take a zero-tolerance approach. From cigarette butts to fridges, they'll investigate and issue fines from \$363 to \$9113, depending on the offence.

We remove 6500 square metres of illegal graffiti each month, in response to 2500 reports from the public. This costs ratepayers about \$1.5 million annually.

You can help us keep our beautiful city clean and inviting by using the QR code on this page to report illegal graffiti and street waste in your neighbourhood.

For more information, visit [melbourne.vic.gov.au/graffiti](https://melbourne.vic.gov.au/graffiti)

Scan to report graffiti and street waste



Rapid Response Clean Team



## NEW KEYPASS TO FAMILY FUN



Get discounted entry to attractions like SEA LIFE Melbourne Aquarium

Explore magical underwater worlds, snap a selfie with a giant, optical-illusion mural and cruise along the Yarra River – Birrarung thanks to a City of Melbourne initiative attracting families to the CBD.

The Melbourne Attractions Keypass will unlock a 25 per cent discount for tickets to SEA LIFE Melbourne Aquarium, ArtVo and Melbourne River Cruises when bundled together.

The Keypass initiative is a partnership between the City of Melbourne and online travel agency Klook. Tickets are available to purchase until 31 March.

In addition to the Keypass, you can also snap up 15 per cent discounts for many more popular Melbourne experiences, including foodie tours, ice-skating and boat rental.

Find out more at [whatson.melbourne.vic.gov.au](https://whatson.melbourne.vic.gov.au)

## FOOD AND ORGANIC WASTE COLLECTION EXPANDED

Keep an eye out for new food and garden organics bins being delivered to 14,000 dwellings in buildings of up to five storeys from late March.

The first phase of our food and garden organics collection was rolled out to more than 9000 single unit dwellings from last June.

Since then, we've diverted more than 830 tonnes of organic waste from landfill, making it into compost for parks and gardens. We're now developing tailored approaches for apartment buildings.

### Why organic waste matters

Organic waste in landfill generates methane, a gas which has a climate change impact 25 times greater than carbon dioxide.

That's why it's important to process this waste differently and keep it out of landfill.

By removing organics from the general rubbish collection, we can cut our residential landfill footprint in half, reduce carbon and methane emissions and promote a circular economy.

This project is part of our wider plan to reduce landfill and improve waste and recycling services across the municipality as outlined in our

Waste and Resource Recovery Strategy 2030.

### How to use the new green bin

You can dispose of things like fruit and vegetable scraps, meat, fish, weeds, and grass cuttings in your new bin. Remember, if it grows, it goes in the new green bin with the lime green lid.

We will support residents with information and events as we roll out this service across the municipality.

For more information, visit [melbourne.vic.gov.au/food-garden-waste](https://melbourne.vic.gov.au/food-garden-waste)



We are expanding our organic waste collection to multi-unit dwellings

Information and events in this publication are current at the time of printing. Subsequent changes may occur. All photos taken in line with health and safety guidelines.

Connect with us  
[/cityofmelbourne](https://www.facebook.com/cityofmelbourne)  
[@cityofmelbourne](https://www.instagram.com/cityofmelbourne)  
[@cityofmelbourne](https://www.twitter.com/cityofmelbourne)





# Royal Mail Hotel up for sale after relaunching as a new home for veterans

WORDS BY *Brendan Rees*  
COMMUNITY

An iconic West Melbourne pub, which recently relaunched as a haven for ex-service personnel and veterans, has suddenly closed its doors after the owners decided to sell up.

Shaun Matheson, a former army officer who heads a charity group called The Ark of Veterans, was behind the rebirth of the Royal Mail Hotel at the corner of Spencer and Stanley streets after the popular watering hole closed in January 2021.

He said he had had a great response from the community after having undertaken a six-month renovation project to transform the venue into a comfortable space for veterans to call home.

But after just eight weeks of the much-anticipated reopening, Mr Matheson said his pub dream was over after an “auction” sign went up at the front of the building in February.

“Everyone stopped coming in, the pub shut overnight,” he said.

Mr Matheson said he was saddened to have to say goodbye to the community who had embraced the new-look venue, which featured different coloured walls to represent the army, navy, and air force in the front bar area.

There were also military photos and memorabilia on display as well as machine gun cases used as tabletops.

He said all expenses that went towards the pub’s makeover had been raised through The Ark of Veterans, a training centre based in Lang Lang in Melbourne’s southeast where veterans could restore old Holdens.

Mr Matheson said his intention for the pub wasn’t about drinking beer, but rather offering a place of friendship and support and a place to share a yarn – with all money raised from the sale of drinks going towards his charity.

It was also a place where former police, ambulance, and fire brigade personnel could meet up.



▲ The Royal Mail Hotel in West Melbourne is up for sale.



▲ Shaun Matheson, a former army officer who heads a charity group called The Ark of Veterans.

“They started coming in in good numbers, they were looking forward to the local pub reopening,” he said.

“It was a great peaceful place, it had a great vibe, and even the other local bar people ... they were a great help to me.”

“From that bar we were building community ... and the fact that that stops is disheartening.”

But he added, “The work that we do actually continues, it doesn’t rest on the pub.”

While Mr Matheson said he didn’t expect veterans to travel to Lang Lang, he hoped veterans in the West Melbourne community would keep connecting.

“The awareness program we were able to develop from that bar was quite significant,” he said.

“If they [veterans] could continue with their own awareness or their own understanding or their own desire to be involved with a veteran somewhere beyond us that would be great.”

Mr Matheson said he had been given the opportunity to run the pub rent-free for at least 18 months, adding the owner’s “heart was to help the veterans” but a change of circumstances meant the pub had to be listed for sale.

“We had a good crack at it, but it didn’t work,” Mr Matheson said. “I spent a truck load of cash which I probably shouldn’t have in hindsight, but what are you going to do?”

The Royal Mail Hotel, built in 1938, was formerly run by Davydd Griffiths who is now a City of Melbourne councillor.

“It’s very much in my thoughts at the moment,” Cr Griffiths said of the pub, which he regretfully had to walk away from in 2021 after two years due to the extensive costs of renovations required, with the main part of the building comprising of the front bar being up to a century old.

“A well-run pub should be a cornerstone of a community and a place where everyone can

come together and enjoy hospitality, and to lose those kinds of spaces is very disappointing for a suburb like West Melbourne.”

The sale of the hotel is being managed by the Colliers Melbourne City Sales team, which is conducting an international expressions of interest campaign closing on March 18 at 12.30pm with a \$4 million-plus price guide.

Colliers executive Alexander Leggo said interest had been received from various parties but mostly from hospitality groups, which was a promising sign the hotel may not have poured its last drinks just yet.

“It would be great to see it come back to life, there’s a lot of residential and mixed-use projects coming up in the area but there hasn’t been a lot of new hospitality venues, so it would be sad to see it go,” he said.

The sale comes as North Melbourne’s iconic Court House Hotel, which dates back to the 19th century, is also up for sale ●

## Join or renew your North & West Melbourne Precinct Association (NWMPA) membership and receive a \$60 Precinct Gift Card to spend in participating local businesses, plus an extra \$30 for memberships paid before April 5th!

12-months NWMPA membership costs \$60 and provides local traders with:

- Access to business support and advice
- Invitations to networking and professional development events
- Listing in the online NWMPA business directory
- NWMPA window decal and precinct tote bags
- Benefit from the precinct gift card program

Join or renew your membership via [northwestmelbourne.com.au](http://northwestmelbourne.com.au)



# Demolition of old Kensington Community Recreation Centre begins

WORDS BY *Spencer Fowler Steen*  
CAPITAL WORKS

Bulldozers have moved in to demolish the old Kensington Community Recreation Centre (KCRC), making way for the \$42 million revamped version set for completion in late 2023.

The City of Melbourne unveiled designs for the redevelopment earlier in 2021, which featured a 25-metre pool, three indoor multi-sports courts, program rooms, a children's water play area, and a wraparound café.

Lord Mayor Sally Capp said the demolition began on March 8.

“Over the past few months, our team has been working hard to prepare the site for demolition works, including draining the pool, removing equipment and other items and disconnecting essential services,” she said.

“The building will be demolished in stages before we begin construction on a brand-new recreation centre, which will feature a 25-metre



pool, gym facilities, indoor multi-sports courts and community spaces.”

“The redevelopment will support around 170 jobs, and provide a state-of-the-art facility for city residents, workers and visitors to enjoy.”

The City of Melbourne has also secured an additional \$110,000 in funding through the Victorian Government’s Changing Places grant program to construct an accessible restroom with adult change tables and hoists as part of the redevelopment.

In December, the council announced McCorkwell Constructions as the builder – the same company behind the Wheeler Centre development at the State Library Victoria.

With the facility having served the community since 1976, the City of Melbourne identified a dire need to upgrade the KCRC to meet the community’s diverse requirements.

Although the project was tipped to be finished by 2023, the redevelopment is now expected to be complete by late 2023.

After closing its doors to the public in August

last year, the centre was emptied, and the pool drained in preparation for works to begin.

The City of Melbourne said it had relocated most gym equipment to the North Melbourne Community Centre for members to access, while other items had been donated to community groups and local charities.

Fitness classes have been added to the North Melbourne Community Centre and Kensington Town Hall to help the community stay active while the centre is redeveloped.

Two steel sculptures of eels at the centre, which were created for the opening ceremony of the 2006 Melbourne Commonwealth Games before being rehomed at KCRC, have also been safely removed and placed into storage.

The City of Melbourne said the sculptures would be incorporated into the new centre as per the wishes of the local community.

The redevelopment will include sustainable designs and better integration of JJ Holland Park, which will not be impacted by the project

# “Worst electoral system in the country?” Warnings sent to agents after 2020 election probe

WORDS BY *David Schout*  
ELECTIONS

A City of Melbourne councillor has conceded that it “might just take the prize for the worst electoral system in the country” after 20 real estate agents were warned following an investigation into the 2020 election.

In a recurring issue for the council, the Local Government Inspectorate found that the 20 agents admitted illegally completing ballot papers on behalf of landlords whose properties they manage.

Most of the owners lived overseas, “most commonly in China”, and some had “authorised their agent verbally or in writing to vote on their behalf.”

But despite finding evidence of the breach, the agents will escape with a slap on the wrist as fraud was not detected and, instead, they were found to have misunderstood the electoral laws.

“Our investigation did not uncover any systemic or intentional ballot fraud,” chief municipal inspector Michael Stefanovic said.

“The issues mainly arose due to these real estate agents not understanding our electoral laws and

communication issues with owners that were exacerbated by pandemic restrictions.”

Many agents were unaware that voters absent from Victoria during the 15 days prior to the close of voting are excused from voting.

The agencies reported that the property owners generally “had limited English”, “were not interested in the election” and “communicated with their agents in Chinese through WeChat”.

Cr Rohan Leppert said the system was in urgent need of reform.

“While no evidence of ballot tampering has ever been brought before the courts, it is clear that City of Melbourne elections are overly reliant on the honesty of a handful of real estate agents,” he told *North West City News*.

“We might just take the prize for the worst electoral system in the country. Consistent with the clear will of the community and the past positions established by the council, the electoral system simply must be reviewed.”

The investigation looked at 216 ballot papers completed by representatives from 21 real estate agencies, and those ballot papers under

investigation were excluded from the ballot count, meaning they did not affect the outcome of the election.

It follows a probe into the 2018 Melbourne Lord Mayoral by-election vote in which five people were also given formal warnings.

In that by-election, 6889 ballots were sent to voters “care of” real estate agents, with large local real estate group MICM receiving 1700 ballot packs alone.

In July 2021 councillors voted for a state government review of the *City of Melbourne Act 2001* which also, controversially, grants one vote to residents in local government elections, while businesses were entitled to two votes.

That means that a business that rents a desk within the municipality is currently entitled to greater participation than local residents, as well as the chance to run in elections.

Councillors urged that the review begin in 2022, in time for the next election in 2024.

The “unique” system has not been properly reviewed for more than 20 years, while the electoral system for the other 78 Victorian councils was reviewed for the *Local Government Act 2020*.

At the March 1 Future Melbourne Committee meeting, Cr Leppert put forward a motion that urged Minister for Local Government Shaun Leane to respond to the request.

“The problems with the City of Melbourne electoral system are overwhelming, and the community has long been frustrated with Melbourne’s unique electoral provisions,” he said.

“The state government seems content to turn a blind eye to the flaws in the *City of Melbourne Act*, and my motion is the latest attempt to bring on a comprehensive review so that it can be completed ahead of the 2024 election.”

“The Minister for Local Government needs to decide if he wants a healthy democratic system for Melbourne that is trusted by the voters, or if he is content to continue letting our democratic systems fall apart.”

Fellow Greens councillors Olivia Ball said electoral integrity had “scarcely been more important than it is now”.

“Democracy cannot be taken for granted,” she said at the March 1 meeting.

“We will be held to account by the

“  
*We might just take the prize for the worst electoral system in the country.*  
”

public who want a transparent and reliable of government and elections. We ask the minister to defend this patch in the quilt of democracy in Australia and to do so promptly, so we’re adequately prepared for the 2024 election and the public can have confidence in both the process and outcome.”

The motion was unanimously endorsed by councillors ●

 *David Schout*  
JOURNALIST  
DAVID@HYPERLOCALNEWS.COM.AU

# Playing up in hospitality

WORDS BY *Rhonda Dredge*  
COMMUNITY

In Bellair St opposite the station there’s a café called Fruits of Passion that has seen more flamboyant days.

There used to be drag shows out the front on family day and shocking tales posted to the window.

The former Federal Minister for Foreign Affairs Alexander Downer was a regular as was comedian Dave Hughes.

“His [Downer’s] 10 sexy bodyguards would line the street whenever he visited to meet his daughter for breakfast,” former owner Maryanne Scott said.

They were pioneering days and Maryanne wants to compile a book about the goings on between 1993 and 2002 when she owned the business.

“We were waking up society,” she said. “One woman came in and I asked: are you wearing any undies? It turns out she wasn’t. She dropped her guard after that.”

Helping people break out of their restrictions was Maryanne’s motto. She could have been selling love potions.

Another customer proposed to his fiancée



▲ *Maryanne Scott ready to spill the beans.*

when Maryanne bought out a pancake with a banana wearing an engagement ring.

The former cook and restrauteur is calling on those who were customers to send in their stories. She wants to publish them. A stand-up comedy piece is also on the cards.

“I thought of the idea when David Bartle reached out. He runs a bar/eatery in Ascot Vale. He used to come in as a kid, about 12, and liked the pictures of half-naked football players on the walls. He gave me goose bumps when he tapped out a memory.”

“It has got me thinking though about how many other people must have their own stories,

good, bad and possibly even ugly, of this fabulous cafe during my time.”

“Who remembers when I was on the front page of *The Australian* newspaper with my clothesline out the front of the cafe strung between the veranda poles with my lucky blue and white undies and bras socks and North Melbourne football jumper?”

“Who remembers when Naomi Robson from Channel 7’s *A Current Affair* filmed a story about how I hired my friend Peter Pantha to perform a strip show out the front of my cafe on festival day?”

“Who remembers Kate Jacobson saying she wasn’t offended by my entertainment at the age of 14. She and most of the kids from the area joined Peter on stage where he taught them all to dance. I wonder how many grew up to be professional dancers?”

Maryanne said she was doing a community service by encouraging the gay community.

“My first customers were gay. They were a couple and too afraid to come out. Kensington was a rough place. I had the kids of criminals coming into the café,” she said.

“In fact, pretty much every underbelly gangster came in for a satay chicken and roast sweet potato with cream cheese, sun-dried tomatoes and baby spinach bagel.”

One local kid worked for her and walked her dog. She took him to the Gold Coast for a day’s outing. He’d never flown before. He died at the age of 19 of a drug overdose. Stories, both funny and sad, make up the history of the Fruits of Passion and Maryanne is a connoisseur.

“On sunny days everyone got a free glass of champagne and on winter days everyone could help themselves to a cup of German Gluhwein.”

“Everyone loved the smoothies and juices, ice creams and roast vegie roll, ready every day at 12 o’clock. The soup with thick slices of toast and butter sold out every day and who remembers my fabulous mixed berry porridge made with King Island cream?”

Other regulars included Curtis Stone, Sigrid Thornton, Poppy King, Carl and Roberta Williams, Simon Marshal and Darren Gauci, Dennis Pagan and the Kangaroos football team.

After selling the business, Maryanne opened a café in Middle Park then worked in the CBD. She now works in a nursing home, and in true flamboyant fashion, still loves a tall story. She looks after Victoria’s oldest person and “he’s as fit as a fiddle”.

You can send your stories to [rawnychia@bigpond.com](mailto:rawnychia@bigpond.com) ●



# St Michael’s building its way to “first choice” for North Melbourne families

WORDS BY *Kaylah-Joelle Baker*  
EDUCATION

Since September 2021, St Michael’s Primary School has been undertaking a major build to help create an exciting new learning space for families in North Melbourne.

After a \$5 million state government grant in late-2019, principal Denise Hussey said the build was back “on track again” after the hassles that came with building during COVID times.

Opting for a modular design, Ms Hussey said the choice meant classrooms are built quickly off-site, which both limits and shortens the impact on the surrounding community.

“At the moment when you drive past the school you can only see scaffolding, but in the school holidays there will be a building there,” she said.



▲ St Michael’s Primary has received a \$5 million grant to build new learning spaces.

Confident that the latest updates and improvements would help support the increase the school is seeing in its enrolments, Ms Hussey said she was “excited about what the future holds” for St Michael’s.

“We have run out of learning spaces, so this building will give us some really great contemporary learning spaces that are really conducive to the style of learning that we do at the moment,” Ms Hussey said.

“It will allow our school to continue to grow and it will give us some really modern facilities to complement the history of our 103-year-old building.”

As a school that has often had to deal with balancing students and staff in cramped spaces due to its location in the city and on main roads, the new build will aim to maximise on the minimal space.

The raised design means that St Michael’s will

not only end the project with more classrooms but also a rooftop playground to go along with the ground floor playground already in place.

“Being on such a small footprint, playground space is vital and so we are using every possible space we can make available,” Ms Hussey said.

“The build is focused on providing our kids with the best possible opportunities to learn and pursue their passions and to provide a wonderful space for our community to come and get involved in.”

The new building is scheduled for completion by the middle of the year, and it is through the improvements that the school is hoping to be “on the map in North Melbourne as a school of first choice for families in the area.”

St Michael’s is located at 8 Brougham St, North Melbourne ●

## New 40km/h speed limits in North Melbourne under final review

WORDS BY *Spencer Fowler Steen*  
CAPITAL WORKS

The Department of Transport (DoT) is in the final stages of reviewing new 40km/h speed limits for roads in North Melbourne after a request from the City of Melbourne (CoM), but signs have been covered up for around a year according to locals.

Last year, the council made a request to the DoT to reduce speed limits to 40km/hr on Arden, Abbotsford and Victoria streets as part of a push to provide safer roads in North and West Melbourne.

New speed limit signs were erected and new bike lanes were painted on local streets around 12 months ago, according to one local.

“All that needs to be done is to remove the covers on the new speed limit signs,” they said.

“I estimate 12 months have gone by, but nothing has been announced or done yet.”

“Who is responsible for the delay, council officers or contractors? Either the reduction in speed limits is needed or money has been wasted.”

Asked when the new speed limits would come into effect, a CoM spokesperson said it was working closely with the DoT but did not provide a date.

“The City of Melbourne has been working closely with the Department of Transport to provide a safer road environment for pedestrians, cyclists and drivers in West and North Melbourne, including a reduction in speed limits in some areas,” the spokesperson said.

North West City News understands the DoT is ultimately responsible for introducing the new speed restrictions, with design and infrastructure changes to additional traffic signals needed before this can take place.

A DoT spokesperson confirmed that it was in the “final stages” of reviewing the CoM’s request and would continue to work closely



▲ New 40km/h speed signs in North Melbourne are yet to be unveiled.

with the council to ensure the speed limits were suitable for the area.

“We know speed limits need to be suitable for the specific road environment – that’s why we assess them on a case-by-case basis,” the spokesperson said.

It remains unclear how long the review process will take.

In February last year, the council announced new Abbotsford St bike lanes via its Twitter page.

Online users welcomed the new lanes and offered suggestions including that they needed to be repainted and that similar improvements were needed at the last section at Flemington Rd northbound.

But one user said he was “not feeling it”.

“Not feeling it CoM! The whole road needs to be redesigned or at least drop the speed limit down. Cars are parking on the line, bins are left in the bike lanes and keep clear signs keep getting hit. Car parks are too close to tram stops, maybe ditch a couple of parks.” ●

## Elderly lady loses \$6k to Telstra scam

WORDS BY *Spencer Fowler Steen*  
SAFETY & SECURITY

A North Melbourne local has warned of a sophisticated scam targeting Telstra customers after she was tricked into giving her credit card details over on the phone, leaving her feeling “scared” and “ashamed”.

Prue, 70, who asked not to share her real name, said \$6000 was stolen from her late last year after receiving a call on a Melbourne number from someone claiming to be a Telstra representative.

“I got a call in the evening from Telstra saying they’d picked up some anomalies in my internet and email,” she said.

“I’d been having difficulties with my email at the time. In perfect English – and it was a Melbourne number so I thought that looked authentic – they said, ‘we have the last four digits of your credit card, if we read them out, can you give me the rest of the numbers?’”

“They ended up coming through my phone and doing phone banking. I’m always careful, but they ended up accessing my account and transferring quite a lot of money out.”

Prue, who has worked until she was 70 and travelled all around the world, said she wanted to warn the public about the sophisticated methods the scammers used, which included tricks to convince her bank that their transactions out of her account were legitimate.

“I want people to realise it doesn’t matter how wise you are, you can be tricked,” she said.

“I was distraught, I had two months of feeling of how could this happen to me? How could I lose money I’d earned and worked so hard to get?”

“I’m a very nervous person since then. It hurts. I raised three children on my own, I’ve paid for everything, I bought my property, but I feel like we’re not safe anymore from these people.”

“They’re getting cleverer and cleverer, and no-one is safe. I was always very confident, but I was so ashamed.”

Prue said after she noticed money coming out of her banking account in small instalments, she reported it to the police who informed her that international scammers could use Melbourne numbers.

Luckily, her bank came to her aid and refunded the money after she called Telstra who told her that the company did not ask for credit card details over the phone.

“I just want to prevent this happening again, I feel like the police, banks and Telstra are all dealing with scams, but they’re not combining. There’s no plan that I know of. I think they’re problem is so big, no one knows how to deal with it and the police are running around like mad hatters.”

Asked what Telstra was doing to address these types of scams, a spokesperson said the telecommunications company took these issues seriously.

“We take these matters very seriously and our aggressive blocking strategy now stops more than 13 million suspected scam calls a month on average from reaching end customers,” the spokesperson said.

“We know that scammers sometimes try to impersonate Telstra.

“If it doesn’t sound or feel like Telstra, hang up.” ●

For more information:



# MUSIC LESSONS FOR ADULTS AND CHILDREN OF ALL AGES

## VIOLIN · GUITAR · PIANO · DRUMS SAXOPHONE · SINGING · HIP HOP BASS GUITAR · ROCK BANDS

53 Little Baillie St, North Melbourne 3051 | 03 9329 0503 | info@livingmusic.com.au | www.livingmusic.com.au



# Damaged tree an “insidious” act of vandalism

WORDS BY *Brendan Rees*  
ENVIRONMENT

The City of Melbourne is keeping an eye on the health of a street side tree in North Melbourne after it was believed to have been poisoned earlier this year.

The vandalism of a London Plane tree in Abbotsford St, in which drill holes were found in the base of the trunk, has left the community in shock and baffled as to why someone would carry out such an act – with one resident labelling the behaviour as “insidious”.

Council staff are monitoring the tree for any signs of recovery growth after the drill holes were identified during inspection in January.

A council spokesperson said the tree was in “rapid decline” which was a “common response to poisoning.”

The council said it was not known what type of substance had been applied to the tree but added “any cases of street tree vandalism are taken seriously and investigated by our local laws team.”

“If the tree continues to deteriorate and requires removal, the public will be notified and a replacement tree will be planted,” the spokesperson said.

Local resident Chris said she couldn’t believe that someone would want to harm the tree, adding “to have that mindset is quite extraordinary.”

“I don’t know anything about it except when the signage went up and it was really disappointing,” she said.

“It’s just insidious when you look at the drill holes that someone has gone to some effort to do that.”

“Why would you do that and only to one because if the issue is leaves, then you’re going to get it from the rest of them, so this achieves nothing.”

“To me now, that’s an eyesore.”



▲ A tree in North Melbourne is in “rapid decline” after an act of vandalism.

Chris, who asked not to use her surname, said she was pleased the tree would not be removed and hoped it would survive.

When the *North West City News* inspected the tree in question, much of its foliage appeared to have receded.

A notice has also been displayed on the trunk by the City of Melbourne requesting information from the public, however, the council said no information had been received in relation to the damage.

According to the council, it responded to fewer than 20 incidents of street tree vandalism in the past 12 months, which included lopping of branches, poisoning and illegal removal.

Local arborist Sam Power of Tree Response said without having assessed the vandalised

tree it was difficult to comment on its chances of survival but added irrigation and promoting good tree health was key.

“Without having seen the tree it’s difficult to say. There’s a lot of factors involved, and it depends on what type of poison has been applied,” he said.

“There’s not a lot you can do ... if you’re promoting good tree health it just gives the tree the best opportunity possible to respond, put on new growth and survive.”

“We’ve come off two summers below average temperatures and also higher rainfall so I wouldn’t be expecting a tree in North Melbourne to be defoliating at the moment.”

But he added: “They are a highly tolerant tree, and they tend to be quite vigorous.” ●



## Brand new Melbourne West End build expected to fetch \$35m plus

WORDS BY *Brendan Rees*  
REAL ESTATE

A brand-new luxury apartment building at 221 Rosslyn St, West Melbourne, is up for sale with a \$35 million plus price guide.

Designed by CHT Architects, the building comprises 99 studios, and one- and two-bedroom apartments.

It also comes with a ground floor restaurant over two retail tenancies at the corner of Rosslyn and Adderley streets. There is also a rooftop bar and 27 basement car parks which are located on the one title.

The building is part of the \$345 million West End precinct development which was completed in March 2021. Expressions of interest for the building are being sought by Colliers Melbourne City Sales and Jones Real Estate.

The property is advertised as being suitable for investors for purpose as a hotel or serviced apartments, with rooms 39sqm each with a terrace or balcony.

Colliers’ Daniel Wolman said the purpose-built accommodation was an “extremely rare opportunity to acquire a brand-new building in a prime city fringe location”.

Mr Wolman said there would be “significant tax depreciation benefits” and appeal to buyers for build-to-rent ventures.

“The projection continues to grow for build-to-rent and co-living models as a prominent player amongst the suite of mainstream commercial property asset classes in Australia,” he said ●

# Council meets in West Melbourne

WORDS BY *Spencer Fowler Steen*  
COUNCIL AFFAIRS

For the first time in its history, the City of Melbourne has taken one of its two monthly Future Melbourne Committee (FMC) meetings to locals in West Melbourne in an effort to bring democracy closer to those it represents.

On March 15, councillors met at the West Melbourne Baptist Community Centre on Miller St, which was the second meeting it has held away from Melbourne Town Hall in 2022 following its February meeting in Carlton.

Cr Jamal Hakim said West Melbourne was “as close as you could get to the city centre without actually being in it”.

“This neighbourhood is diverse, it’s pragmatic, it’s constantly evolving,” he said at the meeting.

“And what strikes me is that we have just a bit over 8,000 residents, and we believe and expect there will be an additional 9,000 residents by 2040.

“So there is going to be an explosion here in West Melbourne. So we must make sure we get it right.”

With each community meeting offering a “local focus” in the agenda, the council used the March 15 meeting to highlight several key projects and issues for West Melbourne, which *North West City News* has outlined below ...

### Current projects underway in West Melbourne

- A new Neighbourhood Plan for West Melbourne. Community consultation will occur throughout March and April



▲ Cr Jamal Hakim talks to local resident Kathryn Morrison at the first committee meeting held in West Melbourne.

2022. West Melbourne residents, businesses, workers, students and visitors are encouraged to participate: **participate.melbourne.vic.gov.au/participate-west-melbourne.**

- The implementation of a new Affordable Housing Strategy.
- Through its Creative Spaces program, the council is supporting local arts production through 60 sponsored studio residencies at the 3000 sqm award-winning Sims St warehouse conversion, River Studios.
- Hawke St Linear Park.
- The Spencer Street North Masterplan and the North Melbourne Station Precinct Masterplan.
- Neighbourhood-wide parking and traffic studies to inform future urban planning.
- Construction of the West Gate Tunnel elevated roads above Maribyrnong River, Footscray Rd, Moonee Ponds Creek and E-Gate – creating a second freeway connection between the city and Melbourne

Metro’s west. The project is led by the Victorian Government in conjunction with Transurban and is scheduled for completion in 2025.

- The Transport and Amenity Program (TAP) upgrades for priority projects within West Melbourne, North Melbourne and Docklands to mitigate future traffic impacts of the West Gate Tunnel (read more on page 9).

### Moonee Ponds Strategic Opportunities Plan

Councillors also heard an update on the revitalisation of Moonee Ponds Creek, with the opportunities plan seeking to deliver a chain of parklands, new open spaces and wetlands.

While the City of Melbourne does not control the Moonee Ponds Creek corridor, the report from management noted that the council “plays an important role in working with the Victorian Government, neighbouring councils and community groups to ensure that Moonee Ponds Creek meets the needs of the community in the future.”

The Plan recommends eight improvement opportunities across the West Melbourne section of the Creek, which runs from Dynon Rd to Footscray Rd. These include dedicated cycle connections, redesign of pipe and transport bridges, as well as the creation of ecological wetlands for research, storm water cleansing and forming of tidal barriers.

### Maribyrnong Waterfront

The *Maribyrnong Waterfront – A Way Forward* paper summarises key findings from background studies and presents next steps and future opportunities for the land adjacent to the bank of the Maribyrnong River, within the industrial area of West Melbourne.

The Maribyrnong River’s waterfront area is identified within the West Melbourne Structure Plan’s future urban renewal precinct of Dynon, and plays an important economic and employment role in the city. An Aboriginal Cultural Values Assessment of the catchment has been undertaken with Traditional Owners, which documents aspects that can be embedded into future precinct planning frameworks.

Three principles have been developed to help guide the future of the waterfront, including:

- Adapt to a changing context;
- Regenerate and celebrate the Maribyrnong River; and
- Improve connectivity.

### West Melbourne Structure Plan and Planning Scheme Amendment C385

Read more information on page 9.

### Flagstaff Gardens Master Plan

The report from the council’s management said that the 2000

Master Plan for Flagstaff Gardens set out a long-term vision and guides the future management of this area, “dealing with change as well as preservation.”

The plan’s activation and landscaping principles have underpinned the council has worked with the City of Melbourne Bowls Club at Flagstaff Gardens, transitioned the tennis courts for multiple purpose accessible sports, and guided planting decisions during the past decade.

### North and West Melbourne Urban Forest Precinct Plan

Developed in collaboration with the local community, North and West Melbourne’s urban forest is envisioned in the 2012-2024 Plan to be “... alive with colour, diversity and interest. Its shady, layered and connected canopy will provide a retreat for people and wildlife. The varied character of the precinct will be reflected in the character of plantings.”

The plan sets out principles and tree canopy targets. It identifies specific greening opportunities in the Market/Flagstaff North Precinct, Flagstaff West Precinct, West Warehouse Precinct, Dynon Growth Area, West Melbourne Port Precinct, and E-Gate Precinct.

### Open space opportunities in North and West Melbourne

A 2002 study focused on the irregular spaces that occur between North and West Melbourne’s skewed street grids as opportunities for new open space. The Railway Place and Miller Reserve was designed and delivered as a result of this assessment and provides an important green break and views for residents and visitors in this part of the neighbourhood ●



# Councillors call on state government to progress West Melbourne vision

WORDS BY *Sean Car*  
COUNCIL AFFAIRS

The City of Melbourne used its first ever meeting in West Melbourne on March 15 to call on Minister for Planning Richard Wynne to sign off an amendment that would progress the West Melbourne Structure Plan ahead of the State Election.

The West Melbourne Structure Plan – known as Planning Scheme Amendment C309 – outlines the vision reimagining West Melbourne while respecting and leveraging its heritage and character as a distinct community separate from the central city.

That was the “overwhelming” sentiment shared following consultation with the West Melbourne community in 2019 when the City of Melbourne endorsed the vision, which sets out a number of exciting changes in postcode 3003.

Highlights include the creation of a new high street on Spencer St and 10,000 sqm of new public open space throughout the area, which the plan breaks up into five distinct precincts – Adderley, Flagstaff, Historic Hilltop, Spencer and Station Precinct.

Due to not enough councillors for a quorum at a meeting on May 7, 2019, the amendment was ultimately endorsed as Amendment C385 for referral to the Minister for Planning by a special committee of council in April 2020.

A report tabled by the council’s management and discussed by councillors at the Future Melbourne Committee (FMC) meeting held at the West Melbourne Baptist Community Centre on March 15 said officers had been working with the Department of Environment, Land, Water and Planning (DELWP) to “progress the amendment for ministerial consideration”.

“The determination of the amendment prior to the Victorian Government caretaker period commencing would be welcomed,” the report stated.

Deputy chair of the council’s planning portfolio Cr Rohan Leppert described the government’s delay in signing off on the plans to *North West City News* in February 2021 as “unnecessary” and “very frustrating”.

He said the plans were “basically just sitting on the Minister’s desk.”

“We worked hard to design a strong planning framework that the West Melbourne community and the property industry alike supported. It was endorsed by the Minister for Planning’s own planning panel of experts, and the final version was approved by the council’s delegated committee back in May 2020,” Cr Leppert said.

Lord Mayor Sally Capp will now write to Minister for Planning Richard Wynne to “invite a determination on Amendment C385 as a priority” after councillors voted unanimously in favour of the move at the FMC meeting.

The council’s planning chair Deputy Lord Mayor Nicholas Reece told the meeting he had spoken to Minister Wynne “today” and that he expected a decision to be made imminently.

“I have been in contact with Richard Wynne today and I do believe a decision is imminent by the Minister. That is great news for the people of West Melbourne,” Cr Reece said.



▲ A render of a revitalised Spencer St North under the West Melbourne Structure Plan.

Lord Mayor Sally Capp said, “This plan is well developed and has been with the minister for some time and we need to have that approval so we can work on the detailed plans that sit within the vision.”

The new West Melbourne Structure Plan replaces the previous version, which was completed back in 2005.

Key priorities to emerge from community consultation in 2019 included “a sense of community”, appropriate redevelopment and building heights, certainty from the planning process, more public and active transport and more parks, open spaces and greening.

Adderley, which is bound by Railway Place, Spencer St, Abbotsford and Rosslyn St, is characterised by height controls of two to four storeys in order to respect the area’s heritage buildings. Retail, commercial and artistic activities are also flagged.

Flagstaff is enclosed within King, Adderley, La Trobe and Dudley streets and located to the west of Flagstaff Gardens. This area will be developed as a central city fringe precinct with a mixture of building sizes and functions which include residential, education and commercial.

Historic Hilltop, located opposite the Queen Victoria Market (QVM), is bound by Peel, King, Roden, Dudley, Victoria, Lothian and Spencer streets. This area will retain its heritage character with evolving open spaces and wide green streets.

The Spencer precinct is the centre of West Melbourne and located between Roden, Dudley, Rosslyn, King and Spencer streets. The precinct will be mixed-use with mid-rise development under the plans.

A standout highlight of this precinct and the entire structure plan is the transformation of Spencer St into a central high street of West Melbourne. Tram and priority bus services will be extended to connect with Footscray and Arden, with the street to be rezoned as special use for the provision of more shops, cafes and restaurants.

Station Precinct will also offer a mixture of retail and hospitality surrounding the soon-to-be renamed West Melbourne train station

(currently North Melbourne) with contemporary developments, terraces and warehouse conversions to complement the area’s heritage.

### Update on transport and amenity program

The March 15 meeting also heard a number of updates on key projects being delivered by the City of Melbourne and the Department of Transport (DoT) as part of the North and West Melbourne and Docklands Transport and Amenity Program (TAP).

The program is a suite of streetscape improvement projects that will “help to alleviate and leverage some of the effects and benefits of the West Gate Tunnel Project” and is co-funded by the DoT and the council in a matched funding arrangement (up to a maximum of \$100 million over the next four years).

The meeting heard updates on projects including the Spencer St North Masterplan (between Latrobe St and Dynon Rd), the new linear park at Hawke St and Franklin St improvements.

Of particular interest, however, were projects in which management said, “had already been delivered”, but not publicly disclosed, including the Connecting Docklands to North Melbourne Feasibility Study, Victoria St Opportunities Plan and Peel St Corridor Study.

The Docklands to North Melbourne project would see a pedestrian crossover constructed from Footscray Rd to North Melbourne Station over the rail yards.

In relation to the finished projects, Cr Rohan Leppert asked the council’s TAP program director Rob Moore, “If they’re completed, can we see them?”

Mr Moore said all plans would soon “become public knowledge.”

While the West Melbourne Structure Plan proposed that the Docklands connection would come from Hawke St, Mr Moore said the feasibility study identified “real problems getting sufficient elevation.”

“We requested DoT to look at different alignments. By far and away the easiest is from Abbotsford St,” he said, adding that “the plus

*“The determination of the amendment prior to the Victorian Government caretaker period commencing would be welcomed.”*



▲ A diagram showing current TAP projects.

side of that is the two types of bridge links” that were possible, for both public and active forms of transport.

Other projects part of the program which are currently under construction include the Dynon Rd shared user path upgrades and Provost and Little Provost St upgrades, which are both due for completion this year.

Councillors also heard from a representative of local resident group the North and West Melbourne Association regarding the ongoing campaign from local residents for a sufficient sound barrier to be installed along Railway Place to mitigate noise pollution from the West Gate Tunnel Project.

In response to a suggestion that the council fund the barrier through the TAP program, Mr Moore said while the council was supportive of the local community’s push, it wasn’t going to deal with issues created by the state government.

“It’s more important that we use our money to deal with projects that normally fall under council, rather than deal with a project that the state government have effectively created. We will continue to prosecute this matter vigorously,” he said ●



### Coffee, anyone?

The Vine Coffee Roasters provides delicious food made from the finest and freshest ingredients. Our talented baristas are on hand to offer high quality coffee/tea options and a variety of breakfast and lunch selections, such as sandwiches, wraps, turkish rolls and salads. Catering is also available.

Come and enjoy great food and friendly service!

 @thevinecoffee roasters

 **RMIT Building 80, 445 Swanston Street, Melbourne**

**Mon - Fri: 7am - 5pm**





Construction partner:



CYP-B500266





▲ Left: The 6th Melbourne Scout Group taking in the sunshine while spending an afternoon at the Kensington Stockyard Food Garden. Right: The mushroom growing workshop, held at the community garden as part of the National Sustainable Living Festival.

# A community that plants together, grows together

WORDS BY *Kaylah-Joelle Baker*  
COMMUNITY

Growing healthy and sustainable organic food is not the only mission of the Kensington Stockyard Food Garden, but rather it's the Garden's way of encouraging the community of Kensington to grow in unity together.

Located at the corner of Bluestone Serong streets, the Food Garden was founded when local resident and current garden president Nina Ceddia and a group of supporters saw potential for an empty stockyard no longer in use.

Going from "strength to strength" since 2018, chairperson of the Kensington Stockyard Food Gardens Nan Austin believes the garden is representative of the good that can happen when a community comes together and gets involved.

"The stockyards is an historic precinct and it has blue-stone pavings, which means you can't put anything on the ground, so they came up with the idea of putting in some above ground self-wicking garden beds to grow vegetables for the community," Ms Austin said.

"They started with about 30 garden beds and we now have more than 90 garden beds, which means we have almost 100 square metres of growing space."

While there are a number of community gardens in and around the area, Kensington Stockyard Food Garden prides itself on what sets them apart.

Solely gardened by a committee and not the government, members are the ones responsible for preparing the soil, planting the seeds and doing the watering.

It is this structure that Ms Austin said made the garden "a community garden in the true sense" and it is why they eagerly got involved in the community where they could.

Supportive of the zero-waste lifestyle, Kensington Stockyard Food Garden aided in showcasing events associated with the Sustainable Living Festival that took place last month.

Through composting workshops and mushroom growing workshops, the community garden has created an ongoing strong partnership with the festival and dedicated a section of the garden solely to a mushroom growing space.

But it is the impact of the garden on the children in the area that Ms Austin takes pleasure in witnessing the most.

"To be able to come into the garden in the evening and see families coming in to pick something fresh for dinner is a lovely thing to see. For urban children to get to see something growing in the ground is very important," she said.

Many urban children also regularly visit the garden

with the local scouts group and are taught everything from watering the garden to composting and planting seeds and seedlings.

While the garden is proudly the responsibility of the committee and its Kensington members, Ms Austin said creating a space for all has not come without its difficulties.

Trapped between wanting to make the area more user-friendly and maintaining the historic stockyards, the garden committee is navigating ways to really stretch their reach in the community.

"We would like more community engagement, but the council won't approve any toilet facilities, so it makes it very difficult to have school groups or groups of older people coming to the garden as we just don't have the bathroom facilities they would need," Ms Austin said.

"The bluestone paving has also been there since the 1800s and is very uneven which has created some barriers to the wider community, as it isn't a very disability-friendly environment."

Deeming the concerns as "works in progress", the Kensington Stockyard Food Garden is always leaning on what they can control to go above and beyond in making the garden's produce for all.

From dedicating a specific section of the garden for indigenous plants to promote indigenous food and culture, to sharing produce with the Kensington community pantry, the garden is signifying their importance.

"Attached to the Kensington Neighbourhood House is a pantry and once a month they take all the processed products out of the pantry and fill it with green products. We usually average around 10 kilograms a month for the pantry," Ms Austin said.

As an avid gardener at the community garden herself, Ms Austin understands the importance of members doing their part, not only for their health and wellbeing but also for the surrounding community.

"It takes more than a family to raise a child and it certainly takes more than a handful of people to run an effective community garden," she said.

Currently in the middle of brainstorming community events for April, the community garden is working out details for a plant swap and a fundraiser for Mother's Day, both of which will be detailed on their Facebook page ●

For more information:  
[facebook.com/kensingtonstockyardfoodgarden](https://facebook.com/kensingtonstockyardfoodgarden)



▲ West Melbourne author and artist Ed Zhao is using his talents to give back to the community.

# Gracious artist hopes to share joy of city living with community

WORDS BY *Brendan Rees*  
ARTS & CULTURE

A West Melbourne author and artist who migrated to Australia in 2018 says he hopes to give back to the local community after he and his family had been given a "new life".

As a show of his appreciation of living in one of the world's most liveable cities, Ed Zhao said he hoped to repay the opportunity by sharing his love of art with the North and West Melbourne community.

"This country has given us a new life, a new sense of energy, and I want to capture that through my art, and make it relevant to other people around us," he told *North West City News*.

"It's great to see so many community-building actions in this city, and I want to contribute to that."

Born in China, Mr Zhao moved to England for 15 years where he studied economics at university before going on to work on major infrastructure planning projects and rail franchise bids.

In Melbourne, where he lives with his wife and two children, Mr Zhao has worked on several transport projects as well as economic appraisals and business cases.

But when away from the office, Mr Zhao has a love for creativity, having published a picture and story book called *The Story of Holi*, in 2018, a "fun take on the ancient Hindu story".

He said he began drawing before he could write and "it's been with me ever since".

"I have too many interests, whether composing or playing music, writing books or drawing. Now, I want to use my skills in the arts and do something that's beyond a pastime."

“This country has given us a new life, a new sense of energy, and I want to capture that through my art.”

"It'd be great if I could contribute to my local neighbourhood somehow through drawing. I feel I've got something to give."

In the meantime, Mr Zhao is undertaking a personal project entitled *Becoming Australian* which he will present when he applies for his citizenship in a few months' time.

Mr Zhao said he had been reflecting about what it means to be Australian and would embark on interviewing a range of people "who are different in their life experiences and perceptions about what being Australian means."

"While there are stereotypes about Australians, its people are so rich in diversity," he said.

"The impression I had in England about this country has turned out to be such a narrow and almost surreally comical depiction of a great land and its people." ●

For more information:  
[edzhao.com](https://edzhao.com)



▲ Clockwise from left: Kitchen specialist Kristen Re with students Anna (left) and Hannah. Aarush, Lucas, Andrew and Mohamed. Heidi and Hazel. Winter, Lola, Anna, and Hannah.

# Young chefs cook up a storm

WORDS BY *Brendan Rees*  
COMMUNITY

Young chefs at North Melbourne Primary School are back in the kitchen using delicious and healthy ingredients – and they couldn't be more excited.

After two years of stop-start lockdowns which forced lessons to go digital, students are enjoying some hands-on cooking since returning to classes this year.

In their latest project in March, a group of 22 Grade Four students learnt how to make

zucchini bread complete with a cream cheese icing.

All ingredients were hand-picked from the school's herb and vegetable garden, with the school's kitchen specialist Kristen Re helping to take the students through each step of the recipe.

Ms Re said the students worked as a team and shared various roles, whether it be beating eggs or grating a carrot while learning how to read a recipe and use measuring cups.

"What I love most about teaching primary school children to cook is the ability to

introduce new foods that support students' developing taste buds for healthy food choices," she said.

"Cooking encourages development of lifelong skills such as teamwork, flexibility, thinking on your feet and problem solving."

"Mathematics, literacy, and science are also embedded in lessons through creative activities that support not only students' educational development but also their social and emotional wellbeing."

A big step for the Grade Four students is learning how to use a knife safely under the strict supervision of staff – which Ms Re said "they are doing really well".

"They've all been so excited because they

knew it was coming this year, and they get a certificate to show their knife licence."

Despite the merits of technology when classes went virtual during lockdowns, Ms Re said face-to-face classes "provide a creative way for students to express themselves and work collaboratively with their classmates."

"They want to be here; they want to show what they're learning," she said.

Student Andrew said he "loved whisking the eggs and grating the zucchini" while Hazel said the zucchini bread was "delicious" and "never knew I could use a paper bag as a piping bag."

Another student Hannah said, "I really enjoyed cooking the bread, the icing was yummy!" ●



# Get more informed about betting

WORDS BY Rhonda Dredge  
SPORT

There are many intricacies involved in making a winning bet at the races, as anyone who attended the recent Super Saturday at Flemington will know.

But if you have a horse in the meet, the betting is more informed, says a leading syndicate agent.

Rob Slade works with investors from his East Melbourne apartment and he's not pulling any punches.

He selects racehorses at auction then sells off shares. "I think you have to be prepared to take a chance, have a positive outlook and give it a fling," he said.

"It's a kind of therapy. Once it gets into your blood it's intoxicating. A horse can bring you to tears."

He's just been to the Inglis Melbourne Premier Sale and bought two horses. "I couldn't help myself. I had to bid," he said.

The first one was a yearling out of Think Diamonds, a mare he'd syndicated and raced. "She was a good filly who came second in a three-year-old fillies race leading up to The Oaks. She had good ability."

He won't have a name for the yearling until shares are sold and then he'll run in the two-year-race in the first weekend of October.

There are no guarantees for investors. You don't join a syndicate for a steady return or as a substitute for super. All you can do is check the health and parentage and select a good trainer.

One of his horses, Alinghi, won \$3.5 million. She won four Group One races including the Newmarket Handicap, one of the two major races on Super Saturday along with the Australian Cup, in 2005 and was sold as a broodmare for a substantial sum. There were 14 owners. She unfortunately died giving birth.

Another, whose name he forgets, did not even get a start. "You'll beat it. Don't race it, the trainer said."

Rob said Alinghi cost \$80,000 but you couldn't predict



▲ Rob Slade and his winning horse.

a horse's form from the price. "The horses don't know how much they cost. The next superstar might cost \$20,000. I can't see inside their head and heart."

Rob sells 20 five per cent shares in each horse, ranging in price from \$3500 to \$11,000. Upkeep is about \$170 a month. Each of these shares can be divided up again and syndicated.

The funds are managed by Rob through Slade Bloodstock. Wins are divvied up and places go to trainers towards the upkeep.

The figures mean a lot to Rob, whose background is in accountancy. He started in the industry in 1997 and has about 38 horses on the books. They all run with his colours, white with yellow and black bands.

Like many in the industry, he went to the races with his dad as a kid and is sentimental. A commemorative board of his great win at Flemington covers one wall of his flat.

Owning a horse can give you a more informed approach to betting, he maintains "Once you own a horse you look at racing from a different angle. You understand what goes into it."

He said owners went to the main meetings on a Saturday. "They invest in a horse. The sky's the limit. The prize money is tax free. The only time you're stung, (it's totally wrong), is by capital gains tax if your asset cost more than \$10,000 and you sell it." ●

# Plans for a community battery

WORDS BY Sean Car  
ENVIRONMENT

Federal Member for the seat of Maribyrnong Bill Shorten has announced that a victorious Labor Government would provide residents of the Flemington Public Housing Estate with direct access to renewable energy through the installation of a new community battery.

Federal Labor's "Power to the People" program would allow households that don't have rooftop solar, such as renters and public housing residents, to draw from community batteries by "paying a small fee".

To demonstrate the concept, Labor has selected the Flemington Public Housing Estate as one of the first indicative locations for a community battery should opposition leader Anthony Albanese and his team win government in May.

While only 12 per cent of households in the Moonee Valley municipality currently have rooftop solar, nearby households with solar will feed electricity into a battery location at, or near, the estate.

Those households, and Estate residents who choose to participate, will then draw electricity from the battery before resorting to the grid.

While community batteries usually work "like a sponge" to absorb excess renewable energy, the municipality's low solar levels would require a variety of appropriate locations to be

*Labor has selected the Flemington Public Housing Estate as one of the first indicative locations for a community battery should opposition leader Anthony Albanese and his team win government in May.*



identified locally for an array of solar to be installed, as well as other forms of remote energy generation.

Labor said it would work with the Victorian Government, Moonee Valley City Council, the Estate, the local community and the local electricity distributor Jemena to finalise details and determine an appropriate location for the battery ●



▲ Left: Parenting Fails will be showing at the Flemington Kensington Bowls Club. Right: Just The Gist will be on at the Comic's Lounge



# Comedy Festival returns

WORDS BY Zak Wheeler  
ARTS & CULTURE

The Melbourne International Comedy Festival is back and bigger than ever as in-person audiences return in 2022, with a line-up featuring several performances in the city's northern suburbs for the first time.

The laughs kick off on March 31 and continue through until April 24, with shows suitable for all age ranges and COVID-safe policies in place.

Kensington and Flemington will host performances including *Parenting Fails*, *Just the Gist*, *What a Mess*, *Can Ya Stand It?*, and the period political satire *January 26*, in tandem with dozens more throughout the city as tourism returns.

*January 26* is slated to be one of the Flemington Theatre Company's first returns to the stage following a 30-month hiatus, hitting Moonee Ponds' Clocktower Theatre on April 2 and 3, with tickets selling for \$39.90.

Audiences of all ages are welcome to witness Prime Minister Oliver Jones' wife, Arnie, in her struggle to convince her husband that Speedos are not appropriate work attire in the leadup to a revolution.

Those over the age of 16 can enjoy showings like *What a Mess*, *Can Ya Stand It?*, and *What a Mess* when each hits North Melbourne's Comic Lounge between from April 1 to 10.

Featuring appearances from comedians

Mitchell Coombs, Christian Hull and award-winning podcast host Rosie Waterland alongside BFF Jacob Stanley (*Just the Gist*), this year's festival promises to be a grand return to the stage.

"The comedy festival would be a great example of something that hasn't happened before in the suburbs," City of Melbourne Cr Davydd Griffiths said. "I've never seen comedy festival events in places like Kensington."

"When we're looking at events and other things to bring back tourists, we need to make sure that we're thinking about all suburbs, not just the CBD."

The adult-centric *Parenting Fails* promises to disgrace the stage, in an 18-plus performance where Anna Brennan instils the values of a thrifty bogan alongside her accomplice Carolyn who is self-trained in the art of "progressive disciplinary tactics" (i.e., stealing Wi-Fi).

The Melbourne International Comedy Festival is one of the world's largest comedy festivals, hosting up to 770,000 audience members yearly since beginning in 1987.

Ticket prices, start times and dates for each show, along with previous festival guides FAQs and contact details, can be found at the Melbourne International Comedy Festival's website, [comedyfestival.com.au/2022](https://comedyfestival.com.au/2022).

Melbourne's gala joins other internationally renowned comedy festivals such as Edinburgh's Festival Fringe, and Montreal's Just for Laughs Festival ●

# Blitz on car break-ins

WORDS BY Rhonda Dredge  
SAFETY & SECURITY

Law and order are back on the agenda with a blitz on car break-ins announced by police at the North Melbourne station.

"We're getting dozens of thefts a week. I can tell you where they are," station commander Senior Sergeant Carl Whibley said.

The station is sending out a warning to residents of Kensington and Parkville plus to visitors to the Melbourne Zoo.

"Don't leave anything in your car," Senior Sergeant Carl Whibley said. "Not a laptop on the backseat nor a handbag on the front."

"Thieves will break in for some loose change. In my car you can't see anything. There's nothing in there."

There was one case in which a woman said she left her car for just 10 minutes and thought she was safe because it was locked.

"It only takes eight seconds to smash a window and run," police said.

"The public can help with this crime. It is absolutely preventable. If thieves can't see anything they won't break in."

Each suburb of Melbourne has a pattern of crimes related to its urban geography.

To the south of the river in Southbank, where there are large car parks, there has been a spate of number plate thefts.

You get these every time there's a rise in petrol prices, police explain, with thieves using them to trick CCTV cameras at petrol station.



▲ Thieves are operating in the car park at Newmarket shopping centre.

In Kensington most cars are parked on the streets and at the zoo, patrons leave their cars for long periods of time.

With curfew and the lockdown, crime rates dropped and they haven't risen as quickly as the police have expected.

"Crime did trend down during lockdown and now it's started to trend up," Senior Sergeant Whibley said.

Local cops were deployed during lockdown to deal with demonstrations and day patrols.

Now they are back in action targeting hot spots with night patrols. DNA and fingerprinting can be used to catch culprits.

Any car parked in the street could be at risk. Most break-ins occur at night, but one resident of Kensington was witness to an attempted break-in in the car park at Newmarket Shopping Centre in broad daylight.

"I saw a kid breaking into a car at four in the afternoon," he told *North West City News*.

A car pulled up and a kid got out, he said. "He was about 15. He was loitering. The next minute he tried to get into a car. The owner appeared and stopped him."

He said the driver of the car was wearing a balaclava. "It was a Holden station wagon. He pulled up and the passenger got out. The kid used some implement to break into the car." ●



ADVERTISEMENT  
Your City of Melbourne community update

# HAVE YOUR SAY ON NEW NEIGHBOURHOOD PLANS



Help us make your neighbourhood the best it can be

**Have your say and help build a more inclusive, sustainable and empowered city, made up of many unique neighbourhoods.**

Understanding and responding to our community is central to the way we work at City of Melbourne and – as we strive to make life better than ever post-COVID – your voice has never been more important.

So we’re asking residents, business owners, visitors and students to share their thoughts about the unique strengths, needs and outlooks of each pocket of Melbourne.

**Your neighbourhood**

While we’re all Melburnians at heart, the services and support needed by each neighbourhood naturally differ, based on their unique demographics, opportunities and challenges.

This is why we’re taking an approach that focuses on our neighbourhoods, to capture, connect and respond to the specific needs of the community in a highly localised way.

Our new neighbourhood approach will focus on the following areas:

- . Carlton
- . CBD
- . Docklands
- . East Melbourne
- . Kensington
- . North Melbourne
- . Parkville
- . Southbank
- . South Yarra
- . West Melbourne.

**Localised community engagement**

For the first time, we will develop new and localised neighbourhood plans alongside communities, recording and responding to your ideas in a digital and real-time plan.

Ideas will be considered against Council priorities and presented online alongside relevant resources and project updates to give you a clear understanding of what we are delivering.

**Conversation starters**

1. What makes your neighbourhood unique, and a great place to live?
2. What services, facilities or support would make life better?
3. When you picture your neighbourhood in its ideal state, what does it look like?

TO HAVE YOUR SAY, VISIT  
[participate.melbourne.vic.gov.au/participate-neighbourhoods](https://participate.melbourne.vic.gov.au/participate-neighbourhoods)



Lygon Street, Carlton

## COUNCIL MEETINGS IN THE COMMUNITY

This year, we’re holding the second Future Melbourne Committee meeting of each month in community locations across the municipality, to shine a light on the unique needs of each neighbourhood and make it easier for people to engage with councillors and staff.

The locations will include Carlton, West Melbourne, Parkville, Docklands, North Melbourne, South Yarra, East Melbourne, Fishermans Bend, Kensington and Southbank.

For more information, visit [melbourne.vic.gov.au/aboutcouncil](https://melbourne.vic.gov.au/aboutcouncil)



Federation Square



Docklands



ADVERTISEMENT  
Your City of Melbourne community update

# WHY WE LOVE THE INNER NORTH

We know and love Melbourne as the culture capital. The sporting capital. The foodie capital. We know its glorious gardens, its bluestone laneways, its epic events. And the inner north-west is a world within.

## NORTH MELBOURNE ♥

You know already that North Melbourne has awesome dining, cultural and shopping experiences. An eclectic mix of businesses call this Victorian-era street home. So how can we make Errol Street even more exceptional? Help shape the look, function and feel of the street as it evolves.

Tell us what you think about a greener and more social streetscape. Consultation closes 3 June 2022. Find out more at [participate.melbourne.vic.gov.au/greening-errol](https://participate.melbourne.vic.gov.au/greening-errol)

**Culture:** Look for \$20 tickets at Arts House and enjoy a stellar new season of contemporary performance. Check out

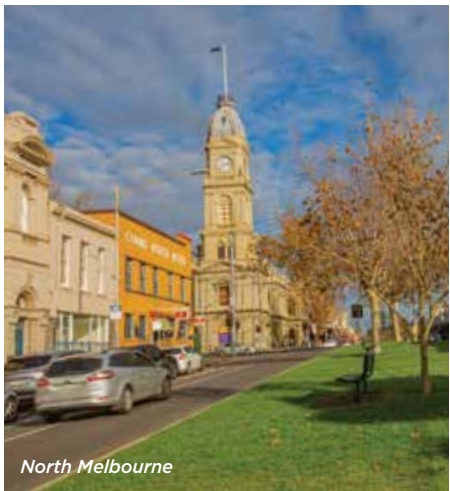
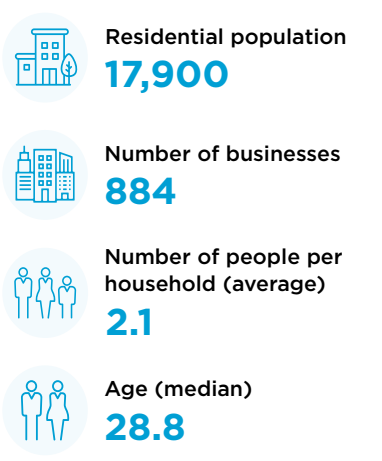
the full line-up at [artshouse.com.au](https://artshouse.com.au) for more reasons to book tickets right now.

**Explore:** Drop into the North Melbourne Library and explore this beautiful space, built in 1882. Or step into Radical Yes and join the flat shoe revolution. Then, head for your new favourite tiny local, Summer's Garden Bar.

**Fun:** Have you ever star spotted a Kangaroo around our facilities at North Melbourne Recreation Centre? Nearby Gardiner Reserve – which almost doubled in size recently – is named after the club's founder.



Kensington



North Melbourne

## KENSINGTON ♥

We love the village-like feel of Kensington's shopping strip, where old favourites such as White Rabbit Record Bar set a cruise cultural agenda. You don't have to stroll far to find more quirky locals such as La Tortilleria.

There are big plans afoot to convert 90 hectares of underused space in Kensington and North Melbourne into mixed-use, mid-rise precincts, so that Melbourne can grow while becoming more liveable and sustainable.

Macaulay in Kensington and North Melbourne will riff on each

area's unique character and draw inspiration from its history.

Moonee Ponds Creek will also be enhanced ... did you know this chain of ponds once flowed into a vast saltwater lake on the edge of the city?

**Free:** JJ Holland Park is a massive communal playground, hosting dirt bike tracks and a skate park, adventure playgrounds for the kids to explore. Look out for the shiny new multipurpose oval, or the sports grounds and off-leash areas where you can make new dog-park friends.



La Tortilleria, Kensington



## WEST MELBOURNE ♥

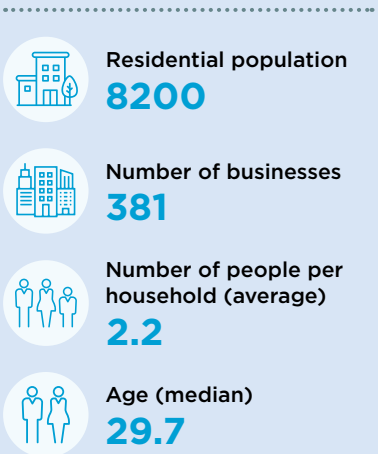


Flagstaff Gardens, West Melbourne

Got cravings for tacos and a margarita? Head for taquería Hello José. Or choose a book from the shelves at Willows and Wine to go with a cheese board. Stock up on deep-fried yum at Lukumades, then text neighbours and organise to meet later for a dessert picnic in Flagstaff Gardens.

**Play:** Book a game of barefoot lawn bowls at City Bowls, going strong in the neighbourhood since 1866. Or play tennis, volleyball or netball at Flagstaff Gardens tennis courts.

**Free:** Sprawling Moreton Bay figs, avenues of elm trees and flashes of jacaranda are among the highlights of having the Flagstaff Gardens as your local. It's a glorious part of the green belt that encircles Melbourne.






TO FIND OUT MORE, VISIT  
[participate.melbourne.vic.gov.au/participate-neighbourhoods](https://participate.melbourne.vic.gov.au/participate-neighbourhoods)

Infographic sources: SGS Population and Jobs Forecast 2020, CLUE 2020, ABS Census 2016. Information and events in this publication are current at the time of printing. Subsequent changes may occur. All photos taken in line with health and safety guidelines.

## KEEP IN TOUCH

To stay connected with all the latest news from the City of Melbourne, follow us on social media and subscribe to *Melbourne* magazine online at [magazine.melbourne.vic.gov.au](https://magazine.melbourne.vic.gov.au)

## Connect with us

 /cityofmelbourne  
 @cityofmelbourne  
 @cityofmelbourne





FEDERAL MP

# Cows on the roof of a service station

It's not every day you see a cow standing on the roof of a service station.

But that's what we have seen in the far north coast of NSW, where record floods have caused incredible amounts of damage to people's lives, homes and communities.

One in three homes has been destroyed. A number of people have lost their lives. The damage bill is already more \$2 billion.

This is what the climate crisis looks like. It's caused by the mining and burning of coal and gas. It creates bigger, and more frequent extreme weather events.

According to the latest IPCC report, floods like the one we have seen this month are likely to be more regular, and 40 per cent bigger.

That's why it is so hard to hear politicians from the major parties say things like "no one could have predicted this", "one-in-100-year event" or describe the events as "unprecedented."

It was predicted and ignored.

Now, with more dire warnings for our future, it's time to change who picks up the bill for the damage caused by the climate crisis.

Everyday people did not cause the climate crisis, we just have to pay for the damage.

That's got to change. We need to make the people who caused the climate crisis, who have profited from causing the climate crisis, and who continue to make it worse, pay.



Companies like Santos, Woodside and Exxon are the people who should be made to pay for the climate crisis, but these companies don't even pay tax. They make massive profits, much of which is sent offshore tax free.

The Liberal Government is trying to look the

other way. With an election on the way, the government is happy to send thoughts and prayers, but not what's needed.

What's needed is no more coal and gas. Right now, Liberal and Labor are both backing 114 new coal, oil and gas projects. They both take

millions in donations from coal and gas corporations, and the big corporations get special treatment, and their projects get fast-tracked.

This time, Melbourne has been spared. But we know it's only a matter of time until the next fire, flood or drought hits us here. Saying that "no one could have predicted it" won't help.

The faster we act now, the less damage there will be. Every tonne of pollution matters, and we are running out of time.

We have enough sun and wind to be a world leader in renewable energy, we can build new industries, clean manufacturing, green metals and renewable hydrogen. These industries can create generations of secure, well-paid jobs.

But we won't get there without leadership. This country needs leaders who will stand up to the fossil fuel industry, not sell us out to them.

Otherwise, we will all be cows on the roof of a service station, watching the waters, or fires, rise around us ●

**Contact Adam Bandt:**  
[adam.bandt.mp@aph.gov.au](mailto:adam.bandt.mp@aph.gov.au) or  
phone 9417 0772

STATE MP

# We must protect Victoria's oceans from gas drilling

*Like most Victorians, our beaches and oceans are very special to me. Before having kids, I loved to scuba dive and discover the wonders below the surface. Now, most of my time at the beach is spent paddling in the shallows or exploring rock pools with two pre-schoolers!*



▲ Ellen Sandell is joined by Dani from Surfers for Climate at the Victorian Parliament to announce the Greens Bill to ban offshore oil and gas drilling.

Our coasts are home to precious and rare creatures, animals and plant life, but they're also an incredibly important contributor to our economy. For example, the 12 Apostles is one of Victoria's most popular tourist destinations, with more than two million visitors per year in pre-COVID times.

That's why it's absolutely shocking to me that the Victorian Labor Government is expanding gas drilling off Victoria's coast. In the past few years, they've opened up five huge new areas for gas exploration, including right next to the 12 Apostles Marine National Park.

In the wake of worsening extreme weather events – including the devastating floods in NSW and Queensland right now – governments need to be rapidly moving away from fossil fuels, not drilling for more.

Just a few weeks ago, the NSW Government announced a ban on all new drilling and mining for coal, oil and gas in their oceans. Amid all the tough news right now, NSW's decision to ban new drilling is a welcome positive step forward for climate action.

The Victorian Labor Government needs to join NSW and do the same, which is why last week in Parliament my Greens colleagues and I introduced a Bill to ban oil and gas drilling along Victoria's coastline too.

We currently don't have many active drilling projects off our Victorian coast, and the few we do have are due to wrap up in the next few years, so the impact on industry or jobs would be very minimal. However, the positive impact on our climate from preventing any future projects and emissions would be huge.

Pushing our state government further and faster on climate action has always been a top priority of mine. While this Labor Government has done some good things when it comes to investment in renewable energy, unfortunately they're also expanding gas drilling. This is on top of the fact that we still get 70 per cent of our energy from burning coal in Victoria, and the state government has no plan to transition away from coal any time soon or to support workers and communities as we do so.

The Victorian Government can't just build renewables with one hand, and drill for more fossil fuels with the other and hope the climate crisis will go away – it doesn't make sense. I think we can do things better.

If you'd like to hear more about our plans to ban offshore drilling, or lend your support to our Bill, you can find out more at [greens.org.au/vic/ban-offshore-drilling](https://greens.org.au/vic/ban-offshore-drilling)

As always, if there is anything I can help you with, please get in touch: [office@ellensandell.com](mailto:office@ellensandell.com) ●



Ellen Sandell  
STATE MP FOR MELBOURNE  
[OFFICE@ELLENSANDELL.COM](mailto:OFFICE@ELLENSANDELL.COM)

METRO TUNNEL



# Delve into the captivating history of the Arden Station site

If you head down to the site of the future Arden Station, you might learn a thing or two about the fascinating history of the area.

From a beautiful lake to a foetid swamp, Depression-era slums and delicious bakeries, the site has seen a lot – and now this rich history has been turned into an illustrated timeline, on display along Laurens St at the Metro Tunnel construction site.

Conceived by the Metro Tunnel Creative Program in collaboration with the North and West Melbourne Association and historian Christine Eid of Tow Projects, *True North* looks at a once-pristine wetland's evolution into a wasteland, and the impacts of industry, poverty and gentrification on a growing city.

"One of the most surprising discoveries during my research was that where Arden Station's construction site now sits, once lay a beautiful wetland known as Blue Lake," Ms Eid said.

"Its abundant flora and fauna sustained and nurtured the life and cultural traditions of the local Kulin people for millennia, but within 20 years of European settlement, this once-pristine Blue Lake was transformed into a dumping ground for industrial and household waste, and became a wasteland known as West Melbourne Swamp."

The dumping ground made way for the introduction of the railway and the arrival of

industry, including prominent flour millers and biscuit makers.

The area transformed again during the Great Depression, when it was home to the Dudley Flats shanty town – a hotbed of crime and poverty, where residents lived in tents and shacks before gentrification kicked in in the 1950s.

For Ms Eid, *True North* is an opportunity to show locals something they may not know about the history of the area.

"One of my favourite aspects of the *True North* illustrated timeline is how it engages and connects with the passer-by," she said.

"By featuring artefacts, photographs and ephemera, *True North* brings to life the buildings, the sites and the stories of North and West Melbourne in and around the construction site of Arden Station."

"It makes a connection between the buildings and the goods that they once manufactured, between a site and the interesting characters that inhabited the area and between a process and the end product."

The timeline will be on public display until late 2022 ●

**For more information:**  
[metrotunnel.vic.gov.au](https://metrotunnel.vic.gov.au)



# The latest from Parkville Gardens

Things to look forward to, things to look back on – there’s something of both in this month’s dispatch from Parkville Gardens.

First, what’s coming up. It won’t be long before the children’s Easter egg hunt on the morning of Sunday, April 10. That’s always good fun for young and old. The next local community event after that is still in the planning stages. More on that next time.

In view of changes to state electoral boundaries, our outgoing local member, Tim Read, is paving the way for his successor, Ellen Sandell. Tim has been an energetic advocate for us on issues like the bus service, school zoning and electric vehicles. He’s already briefed Ellen well and both will be coming to Parkville Gardens in early April to meet with the committee and members of the Residents’ Association. They’re both most welcome and there’s sure to be a lively conversation.

Hot on their heels, Melbourne City councillors are coming to Parkville to meet and consult with neighbourhood residents (i.e. from all of Parkville, not just Parkville Gardens). This is a Future Melbourne Committee meeting. Parkville dwellers are invited to the Treacy Centre, 126 The Avenue, Parkville, on the evening of Tuesday, April 12. The gathering will begin informally with refreshments and a chance to meet councillors from 5pm. The meeting will begin at 6pm. For further information go to [melbourne.vic.gov.au/about-council/committees-meetings](https://melbourne.vic.gov.au/about-council/committees-meetings)

There’s also an ongoing consultation of neighbourhoods being conducted by the City of Melbourne under the banner “Participate Melbourne”. The Parkville segment is now under way. From now until the end of April, Parkville residents are invited to make submissions which will contribute to the development of a Neighbourhood Plan. The council wants to hear “what we love about our neighbourhood and what our priorities and hopes for it are.” To find out more go to [participate.melbourne.vic.gov.au/participate-parkville](https://participate.melbourne.vic.gov.au/participate-parkville). In the meantime we are pleased to be getting acquainted with our new City of Melbourne Neighbourhood Partner, Nas Mohamud, and she, with us.



Sometime between now and the end of June, the City of Melbourne will begin works to modify the intersection of Galada Ave and Oak St. With greatly increased traffic along Oak St, measures are being taken to improve its safety. The eastern end of Galada Ave will be narrowed and straightened, and a raised pedestrian crossing constructed. Temporary modifications to the plan will be made in view of the trucks entering and exiting while the new social housing apartment tower is being built. That work is proceeding apace.

Researchers for the Parkville Heritage Review, Ros Rymer and Suellen Hunter, paid a visit to Parkville Gardens on Friday, March 4 to see the area and its heritage buildings for themselves. It’s worth looking back over some of the history. The Royal Park Psychiatric Hospital was built from 1905 to a design by the government architect Samuel. E. Bindley. The Heritage Council’s assessment of the building

states that it was “the first psychiatric hospital to be established following the introduction of the *Lunacy Act* of 1903 and was intended for the treatment of patients with transient and recoverable disorders.”

Over and above its architectural importance, it is significant “in the history of psychiatric care in Victoria as the place where research into the clinical use of lithium, discovered earlier by Dr John Cade, and other treatments took place.” Cade Square and Cade Way are named in his honour. The hospital continued to function into the 1990s. It was classified by the National Trust of Victoria in 1999.

After the Victorian Government determined in 2002 that the precinct would be the site for the 2006 Commonwealth Games Athlete’s Village, a study was done which led to the demolition of less important buildings and the eventual transformation of most of the main hospital buildings into residential apartments.



The modern history of the Parkville Gardens development (still ongoing) is yet to be written. It would be a most interesting piece of work for an intrepid researcher ●

**Residents can find us:**  
[facebook.com/groups/pggrass](https://facebook.com/groups/pggrass) or  
[email secretary@pgra.org.au](mailto:secretary@pgra.org.au).



*Tom Knowles*  
TOM KNOWLES IS THE PRESIDENT OF PARKVILLE GARDENS ASSOCIATION.  
[PRESIDENT@PGRA.ORG.AU](mailto:PRESIDENT@PGRA.ORG.AU)

## NATURE

# Every child’s delight

*It’s hard to believe, but something good came out of our recent travel restrictions due to COVID ... people suddenly rediscovered our local parks.*

WORDS BY *Howard Birnstihl*

Often, I’d been on my own wandering through Parkville Gardens but now there are hordes of us, picnicking, chucking the Frisbee, enjoying the crazy swooping habits of the rainbow lorikeets screeching their delight at simply being alive, or we’d be searching the trees for the resident owl so well disguised he is almost invisible. Lower down, we could be watching the latest family of ducklings scuttling around mother or the magpies feeding, or like me, listening to the frogs, with the kids scouring the water for tadpoles.

It’s a little hard to decide whether tadpoles are more important in the development of a child or that of a frog. A line ball. And if part of your childhood did not involve carefully juggling little jars of pond life home to watch and marvel over their development, I have to inform you that you have missed out big time.



The humble taddie is just another example of one unique creature which will eventually morph (metamorphosise) into another with an entirely new appearance and quite different habits. The linking factor in this case is water, in which the tadpole spends its entire existence from the time the egg begins to divide and slowly form the typical tadpole shape right up until the gills change to lungs and the frog, still bearing part of the tail, emerges from the pond to start its life as a noisy energetic amphibian.



Really just a swimming head with a rudder, the tadpole actually possesses tiny teeth which it employs to nibble at the aquatic vegetation in which it lives. One dramatic development in the adult frog is the change from herbivore to carnivore with other minor changes such as a shortening of the long gut which had been necessary to digest vegetation.

There are always exceptions to any rule, and this is borne-out by the fact some species of tadpole never experience pond life at all. Some

grow up inside damp bamboo stems while others take advantage of the water which collects between the leaves of the banana plant. Some species never leave the mother and in one case Mum carries the kids around in her voice sac. Dare I say a sort of forerunner to having a frog in the throat?

We associate tadpoles with the indolent life of lazy shallow muddy ponds but some actually exist in the fast lane. Not equipped to swim in these rapid streams however, they attach themselves to rocks for the three or so months of life before launching themselves on to land in frog form.

Many insects breathe through tiny holes called spiracles and, as well as gills, tadpoles possess just one of these breathing holes, always on the left side. As the process of becoming a frog progresses the back legs begin to grow and then the front legs appear. The right front leg breaks through the skin whereas the left one actually takes advantage of the existing spiracle hole through which to exit. A nice little labour saving device – and just another trick in the bag of a most adroit and adaptable little creature.

In this age when many creatures (including you and me, it seems) are under threat of extinction, it’s hardly surprising some species of frog are on the endangered list. As an integral part of a healthy ecosystem, tadpoles and frogs are an important link in the food chain, and their existence is usually a good indication of a healthy environment.

So, the next time you hear the squeals of delight coming from the local tadpole hunters in Royal Park or the Carlton Gardens, you’ll know it’s a good sign ●



ABORIGINAL MELBOURNE

# Off The Wall: New exhibition by indigenous artists blows audiences away

WORDS BY *Spencer Fowler Steen*

A stunning new exhibition at the Koorie Heritage Trust (KHT) brings together the work of three Indigenous artists and their individual experiences of loss and reclamation, as well as stories of their families, culture, and country in Naarm.

*Off The Wall* showcases a diverse range of works produced by Woiwurrung and Yorta Yorta artist Simone Thomson, Yorta Yorta artist Mandi Barton, and Kanolu artist Charlie Miller.

Pierra Van Sparkes, a Kulin Country based Pibbulman Noongar artist and assistant curator at the KHT, said the materials used in the exhibition and the unique installation encouraged audiences to think about the multiplicity of First Nations’ People and their stories.

“I’m so blown away with what the artists have produced,” Pierra said.

“We’ve provided each artist with a 1.5- by 10-metre roll of Stonehenge paper and there’s a mixture of works to be extended from the ceiling and on the gallery floor.”

One of the pieces on display by Mandi Barton, *Burnt Words*, depicts a charred roll of paper with Indigenous words written in ink.

Pierra said the piece spoke about the history of Indigenous languages and storytelling being erased by colonisation.

“In yarning with Mandi about it the burning quality of it, it speaks to this act of quite literally destroying cultural knowledge and family ties,” they said.

“It also speaks to the long history of documenting our people on paper. The Stolen



▲ *Burnt Words by Mandi Barton.*  
*Photo: Christian Capurro.*

Generation was documented on paper and burnt to cover up the uncomfortable past.”

While the piece represents loss, Pierra said the burnt paper also captured the potential for regrowth after initial destruction.

“I think each artist talks about their dual experience of loss and reclamation,” Pierra said.

“Each artist in their own way reflects this idea of Aboriginality and puts their stories of families, cultures, community in one place.”

Having now come full circle, Pierra’s artwork was featured in the Koorie Art Show back in 2016.

But having only been in the new role as assistant curator for six months, Pierra said *Off The Wall* had been in the works longer than they had been at KHT.

“The show itself is such a celebration of black excellence and the many forms it takes,” Pierra said.

“It really speaks to the multiplicity of the ways we tackle ways of life in spaces that



▲ *Darrang Marrup, Tree Spirit by Simone Thomson.*  
*Photo: Christian Capurro.*

weren’t made for us. It’s always such a welcome reminder of how manifold we are and our unique voices that come from that. And sharing space with mob is always great!”

Working with photography, videography and digital media, Pierra said a big influence for them was paying homage to the creative practice they had inherited from their family.

“I projected a video recently that was my own version of a blanket,” Pierra said.

“The idea of that is carrying on my nanna’s practice of making patchwork blankets.”

In their spare time, Pierra said they enjoyed taking a stroll down the Merri Creek, taking



▲ *Emu by Charlie Miller.*  
*Photo: Christian Capurro.*

photos, and spending time with queer and Aboriginal communities.

“I’ve also been trying my hand at sewing; hopefully Nan’s looking down at me and saying, ‘call that a cross stitch?’” Pierra said.

*Off The Wall* is showing from March 5 until May 15, 2022 at the KHT ●

**For more information:**  
[koorieheritagetrust.com.au](http://koorieheritagetrust.com.au)

ENVIRONMENT

# Water

*“Water is life. Its management is one of the major themes of permaculture and water is likely to be the biggest issue of the 21<sup>st</sup> century, whether in the form of too much or too little” – Rosemary Morrow 2006.*

The state of our water on earth is such that clear drinking water is no longer freely available to most of us. Those of us in the cities cannot just go down to our local river or lake and have a drink; this water is inaccessible to us because of the pollution of industry, agriculture and ourselves.

We have to now pay for “safe” drinking water without knowing the long-term effects of these disinfectants making our water “safe”. These water prices are equivalent or greater than that of refined petroleum.

Natural stores of water in the land such as aquifers, swamps, and wetlands are being depleted by irrigation, housing development and mining.

You could say that water is our most critical resource as while some organisms can live without oxygen none that we know of can live without water.

The water cycle is one of the bigger systems of the earth and is a continuous movement of water within the Earth and atmosphere. It is a complex system that includes many different processes. The water cycle is also an integral part of other biogeochemical cycles. The supply and release of water in many forms is inextricably linked. Damage to one part of the cycle affects others.



Fresh drinking water is a finite resource. Ninety-seven per cent of water on earth is salt water. We can’t drink it. Of the remaining three per cent, 75 per cent is ice frozen in the polar ice caps and glaciers, 13.5 per cent is deep groundwater 800 metres-plus down so there is very little available to us. While strategies have been looked at to desalinate seawater – at enormous costs, there always exists an opportunity to look at our relationship with water and how we value it and create water security.

And it’s not all about us – nature uses water in wetlands, rivers, swamps, soils and ground water to regulate vegetation and climate and drought proof the land. When we interfere and dam it or drain it, this deprives the natural environment ultimately affecting us as well. The Murray-Darling is a case in point with ongoing political to-ing and fro-ing while the river and associated wildlife slowly disappear.

While there are no economically feasible strategies or technologies for freshwater creation from the sea or from polluted sources, there are currently several neglected strategies for recycling, purification, conservation and increased storages of rainwater.

What is our self-responsibility towards our own water security? And before you think this won’t impact you, consider how quickly things can change with droughts and flooding. *Permaculture design prepares and plans for floods.* Be aware of your reliance on having your fresh water piped to you.

To have water security you need to have enough water from an assured source all year round for your needs. In permaculture we always design for more than one source for our key resources in case one is negatively impacted.

In the cities, plan for another source of water

apart from mains water. Increase your capture of rainwater in tanks and in your soil through installing swales, increasing plants and using a living mulch to cover your garden soil. This will build up the ground water and soil structure to hold the soil resulting in less watering of your garden.

Know how much you can capture yourself from rainwater and how much you use. We have all seen the sudden downpours in Melbourne and how so much water just runs into storm water drains – imagine if our households and nature strips could capture this and store it not only in our tanks but in the ground for future access. Increasingly with denser living conditions design of water capture needs to be considered in all developments.

Carry out a water audit – how much water do you use per day to have a cup of tea, clean your teeth, water your garden, wash your car, cook.

Minimise your water use – remember dry composting loos.

All of this can be done by urban city dwellers.

How do we restore our water sources close to us in cities so we are not vulnerable, how do we clean up our rivers so they can be sources of fresh water? Around the world there have been many attempts to clean up rivers, by governments, not for profits, community groups and individuals. To name a few there is the River Trust in the UK, the Interceptor used in Malaysia and Clean Up Australia, which is mainly a community effort.

Imagine a clean Maribyrnong River or Moonee Ponds Creek, free of pollution, chemical and other, filled with native aquatic life and plants that keep it clean so that we can take a drink from it ●



*Jacqui van Heerden*  
CO-CONVENER OF TRANSITION  
TOWN KENSINGTON  
[JACQUIVANHEERDEN@GMAIL.COM](mailto:JACQUIVANHEERDEN@GMAIL.COM)



# The Rabble’s YES boldly questions “the truth”

*In a time of uncertainty, where a simple “yes” can have catastrophic repercussions, notable feminist theatre makers have come together to dismantle the truth.*

WORDS BY *Kaylah-Joelle Baker*

Exploring the complexities of power, consent, knowledge and truth in their latest production *YES*, The Rabble aims to take their audience through a thought-provoking performance where a multitude of questions will be explored using a simple answer of “yes”.

According to The Rabble, “People all over the world are trying to tell the story of the past two years. Between the bushfires, COVID-19, the Black Lives Matter protests, transphobia and never-ending conspiracy theories, the chasm between world views is literally and metaphorically widening.”

It is this disruption and widening of beliefs *YES* aims to confront as they reflect on the minimal access to reliable information.

Co-directors Emma Valente and Kate Davis often find themselves questioning the lack of simple facts and conflicting ideas and strive to make the importance of the searching process evident in the production.

“We want to disempower the makers of meaning – the leaders of patriarchal structures – that filter and decide how trauma is portrayed. We want to create a more communal process of searching,” they said.

Set on an ever-evolving physical space, the audience will witness unpredictable manufactured weather events, dramatic sounds and lighting changes.



Passages, public debates and personal memoirs will all be included in the performance to encourage moments of joy, contemplation and existential dread.

Leading the audience through moments of contemplation and eventually to the reflection of their individual feelings about the so-called truth.

*YES* by The Rabble is performing at the Arts

House in North Melbourne Town Hall from March 30 to April 10.

For Arts House artistic director Emily Sexton, it has been a long waiting period with many of the previous shows cancelled.

“After a long gestation period, *YES* will finally have its premiere. This powerful work looks at our relationship to truth in a post-traumatic world,” she said.

“It’s a riveting series of questions that rise, settle, provoke and rise again.” ●

**For more information:**  
[Artshouse.com.au](http://Artshouse.com.au)

## WE LIVE HERE

# Fighting an unfair committee

*Nerida Pohl has provided an update on the committee scandal at her inner-city building...*

“In our building, three out of the five committee members – all supportive of the manager/developer – have been controlling affairs unfairly for the past 10 years – and it needs to stop.”

“It is now 10 years since our managers locked residents out of common property assets that we purchased. This makes our building look decidedly second-rate. Residents are forced to move in and out via the busy street into our elegant lobby instead of via our private, safe and undercover goods lift to the level 2 storage cages. The committee even usurped our residential lounge for their real estate business.”

“All visitors are told the building has no visitor car park and must use the commercial carpark. The car park operator and our owners’ corporation manager share common ownership.”

“The local council has been on the case for five years telling the manager that they must give us back the 50 visitors car spaces and our residential meeting room, and to get large furniture trucks from disrupting the amenity of the street at our front door.”

“Trying to legitimise misuse of our property and without consulting the 500 apartment owners, the stacked committee has spent several hundred thousand dollars of the fees we pay them by engaging lawyers and town planners in appeals to the Planning Tribunal and our local council.” “The managers are interminably dragging out the process to keep us locked out of our property, so all these third parties can continue profiting from using it instead.”

“Last September I thought we had a win; the Planning Tribunal addressed an application by

the manager to annexe our undercover goods lift for the retail area. The Tribunal agreed our undercover loading dock was well built for our use and that the busy commercial street outside our single glass entry door was not suitable for residents’ removal trucks to use. Sadly, the Tribunal finding has not resulted in any remediation.”

“I would like to ensure the owners know what is going on, but the committee is unfairly and actively preventing me from being able to communicate with the owners.”

“Legally, if I ask for the contact details of all owners, the manager must forward the register immediately. In this building, the committee won’t let them. That is why I have had to letter-drop all residents instead of posting 500 letters to them.”

We Live Here believes it is outrageous that a committee and a manager can prevent an owner from viewing the owners’ corporation members’ roll. Committee members should be aware of how their behaviour will be viewed by the courts.

Under the *Owners’ Corporation Act 2006*, members of committees must

- Act honestly and in good faith
- Exercise due care and diligence
- Act in the interests of the owners’ corporation
- Not make improper use of their position to gain a direct or indirect advantage for themselves or anyone else.

If the committee members cannot prove that they acted in good faith, they can potentially lose their immunity under section 118 of the

Act. Then the members would face significant personal liability.

We hope the owners are galvanised by Nerida’s appeal.

If you are having problems with an owners’ corporation controlled by a developer or any vested interests, please let us know.

### Latest version of the Owners’ Corporations Act 2006

The *Owners’ Corporations Amendment Act 2021* was the result of the long, drawn-out review of the *Owners’ Corporations Act 2006* that began in 2015 and meandered through issues papers, options papers, exposure drafts and several revisions.

With these amendments incorporated, the *Owners’ Corporations Act 2006*, Authorised Version 19 is now available.

The release of version 19 of the Act underlines a notable failure of the government. Since 2018, this Act has had embedded within it the amendments of the *Short-stay Accommodation Act 2018*. The short-stay amendments have yet to go under the public review which was promised for February 2020.

Some of the more significant features of the newly amended act include:

### Five tiers of owners’ corporations

There are different rules according to the number of occupiable lots, divided into tiers: Tier One, more than 100 individual lots; Tier Two, 51 to 100 lots; Tier Three, 10 to 50 lots; Tier Four, 3 to 9 lots and Tier Five, a 2-lot or services-only subdivision.

### Levies and insurance

Other changes introduced under the amended Act may reduce insurance and other inequities between lot owners. While ordinary fees levied must still be based on lot entitlement, OCs may separately levy lot owners for:

- an excess amount, or increased premium, attributable to an insurance claim if the

claim was caused by the actions of a lot owner or occupier or guest;

- damage caused to the common property by a lot owner or occupier, if it is not covered by insurance, or if the cost is less than the excess amount.

VCAT has also been empowered to make an order requiring a lot owner to pay the owners’ corporation’s costs incurred for recovering an unpaid amount from the lot owner.

Proxies – five per cent limit

Section 89D of the Act states that a person must not vote as a proxy on a resolution at a meeting of the owners’ corporation on behalf of more than five per of the lot owners, or more than one lot owner if there are 20 or less occupiable lots.

### There’s more to unpack

We shall look at other aspects of the amended Act, including the *Short-stay Accommodation Act* amendments embedded within it in next month’s column.

You can download the *Owners Corporations Act* and amendments from our website at [welivehere.net/acts](http://welivehere.net/acts)

### Campaign donations

As a not-for-profit organisation, donations from individuals and buildings keep our campaigns going. To register as a supporter of We Live Here or to donate, please visit [welivehere.net](http://welivehere.net). We Live Here does not accept donations from commercial tourism interests ●



Barbara Francis & Rus Littleton

EMAIL  
[CAMPAIGN@WELIVEHERE.NET](mailto:CAMPAIGN@WELIVEHERE.NET)

LEARN MORE AT  
[WELIVEHERE.NET](http://WELIVEHERE.NET)







# Faces of North West City

*How do you like living in Kensinton and the north west city?*



JENNY DAY, 62  
I moved here from the eastern suburbs a couple of years ago, and I was blown away by the sense of community and how friendly everybody is here. It's just a wonderful, connected place! I like Erinbank, the giftwares shop here.



LILLY KOJIC, 55  
I've lived in North Melbourne for 15 years, and I have a doctor here in Kensington. There are good people here, they've very friendly - I love Kensington!



TULIANA BOGI, 44  
I've been here for nine years now, and I love it!



SARAH REYNOLDS, 36  
I love living in the northern suburbs, I've always been from down this way. I like Kensington because I've lived here for a long time, I went to school here. It feels like home!

THE KENSINGTON ASSOCIATION

## Scooter helter-skelter

“  
*One of my regular walks is along the Moonee Ponds Creek section of the Capital City Trail.*  
”

Although early week-day mornings are not a good time to walk the trail, being peak hour for cyclists, there I was anyway, walking north so I could keep an eye on the city-bound commuters coming towards me.

About 50 metres ahead of me I noticed a very fast-moving cyclist easily overtaking all others in its path. Before it passed me, I barely had time to recognise that it was instead an e-scooter ... whoosh! My first thought was “wow - that’s dangerous”, but to be honest, I was also thinking “what fun that would be!” Remembering it now, I can’t be sure that I didn’t see a Superman cloak flying along behind!

The following Monday we had the monthly Kensington Association meeting during which we had a Police Community Consultative Committee (PCCC) report which focused on the complexity of policing issues associated with Melbourne’s e-scooter trial. During 2022 some parts of Melbourne – Cities of Melbourne, Yarra and Port Phillip, plus the regional city of Ballarat, are participating in a year-long e-scooter trial with commercial operators Lime and Neuron Mobility. After the association meeting I resolved to give the scooters a try myself.

During the following week I hatched a plan to find a Lime scooter, scoot south to the city along the creek, find a Neuron scooter, park the Lime and scoot home on the Neuron. Simple, I thought. I assure readers I didn’t have any Superman illusions; I had done my homework and knew the scooters were limited to a sedate 20 kph.

I downloaded the Lime and Neuron apps, and located the closest Lime – perhaps a five-minute walk. I turned into the street and sure enough, there it was in all its lime-green glory. However, pulling out my phone, which had located the scooter for me at home, I found the app couldn’t connect to the internet from that location, and I couldn’t hire the scooter without connection! To cut a long story short (lots of fiddling and farting around trying to connect), I located another Lime closer to home. The only problem was, the helmet was missing on this one, but I managed to connect and hire it. I guiltily (helmetless) managed to navigate along back streets to my home to get my own helmet and proceeded on my mission to the city! It was a nice day, it was fun, I didn’t feel like Superman, and to be honest – not being used to electric propulsion – I felt a bit of a cheat effortlessly zooming

along while most of my fellow travellers were sweating it out with their pedals – LOL!

On the outskirts of the city, I noticed a Neuron scooter leaning on a tree. I parked my Lime nearby and logged-on to finish my hire, only to be asked to replace my helmet in order to complete my hire. It began to feel like a saga, even more so when I logged onto the Neuron and was told it was parked “out of area” and, therefore, not available. In short, my adventure concluded with a long walk home, with tail between my legs, no cloak billowing behind me, hoping I had successfully ended my 45-cent per minute hire with Lime!

Although my experience was rather unsatisfactory and unsatisfying, nevertheless I know others who have had more luck, and are enjoying their scooter experience. There is some progressive thinking behind the e-scooter trial; we are moving towards different transport alternatives in search of a less polluted environment. Few would take issue with the need for this transition, but there will always be those who question how it is done. True to form, the Twitter-sphere has begun to cover the whole gamut of praise and condemnation for the trial. Putting one’s “responsible” hat on, few would dispute that the introduction of new technology like this into the public realm requires careful regulation and a trial. As the VicRoads website explains – “We’re undertaking controlled trials of e-scooters to understand the benefits and risks associated with this new transport technology and to test if these vehicles can safely fit into the state’s transport network.” In addition, since Melbourne is not the only city undertaking e-scooter trials, there will no doubt be pooling of ideas from around Australia and overseas in order to devise the best implementation model.

It seems to me that the issue of policing privately owned e-scooters is a critical issue. At present, during the trial, all privately owned scooters on public roads and paths are illegal, only the Lime and Neuron scooters are legal in public spaces! During my brief e-scooter adventure I think I saw only one other Lime or Neuron scooter rider and at least half-a-dozen private e-scooters. Clearly there is a safety issue in relation to privately owned more powerful e-scooters, and it seems that it is difficult to police them. Arguably there is also an inconsistency between the regulation of e-scooters and e-bikes. I’m wondering how police are actually going to catch the private e-scooter speedsters. Perhaps they will need a new posse of police riding V8 equivalent scooters!

In my future-dreaming mode I wonder about other airborne PMV’s (personal mobility vehicles), and the possibility of congested skies. Now they would need to undergo a very thorough trial! ●



Simon Harvey  
CHAIRPERSON  
INFO@KENSINGTONASSOCIATION.ORG



HISTORY

Gasometers

“Once a prominent feature of most towns but when I have asked people if they know what gasometers were, most people under the age of around 50 have looked at me blankly.”

WORDS BY Felicity Jack

Those familiar with Melbourne’s pub life may questioningly relate them to the Gasometer Hotel in Collingwood. Gasometer is a misleading name because it suggests measurement. In fact, they were large cylindrical storage tanks with a permanent external structure but an internal device that rose or fell according to the volume they were holding. This was achieved by a series of canisters floating on water that would vary the height according to the quantity of gas pumped into them. One North Melbourne resident remembers how they would notice the full gasometer early on a Sunday morning and see it fall as



the day progressed and Sunday roasts emerged from family ovens. During the second half of the 19<sup>th</sup> century gas was produced through the burning of coal. The Metropolitan Gas Company ran Melbourne’s gas supply until the formation of the Gas and Fuel Corporation took it over in 1960. It inherited 30 gasometers located throughout the metropolitan area, but, as natural gas replaced coal gas, these gasometers were gradually dismantled. One of Melbourne’s notable industrial accidents occurred on Easter Sunday, April 4, 1920 when gas pumped from North Melbourne to the gasometer on the corner of Pickles and Graham streets in Port Melbourne, caught fire. Flames were estimated to rise 40 metres and

could be seen as far away as Hurstbridge, more than 35 km from the disaster. Many people received more or less serious burns and buildings were scorched. The North Melbourne gasometer, located on Macaulay Rd, was probably built in 1887 and overlooked the Arden Street Oval for many years until it was demolished in 1978. The structure also provided a metaphor : the “Galloping Gasometer”. Mick Nolan was a North Melbourne ruckman between 1973 and 1980. He played 107 games and kicked 40 goals. Despite his size – he weighed 135 kg and measured 194 cm – he was extremely agile. He was given the name by commentator Lou Richards and became a cult figure in Australian AFL. This 1960 photo shows North Melbourne



players Albert Mantello (bending over), John Jenkins (no. 5), and Frank Galle running in. Ted Whitten makes the high leap for Footscray, with an unidentified Footscray player on the far right ●



NORTH WEST CITY LOCAL

Keeping kids on the straight and narrow

WORDS BY Rhonda Dredge

Students are back at university, and some need a briefing on the hazards awaiting them in the big city. Community liaison officer at North Melbourne Police Station, Detective Nick Parissis, is on the job. He’s just been to Unilodge to give newcomers a few tips on how to survive. “They’re country kids and they could be vulnerable. Some are 16 and 17,” he said. “They leave doors open and could be drinking.” North Melbourne Police Station covers North Melbourne, Parkville, Kensington and Carlton and there are plenty of opportunities for keeping kids on the straight and narrow. Nick is a local, having gone to Carlton South Primary School and he visits the school twice a month in a normal year to make his presence felt. His next job will be to take a group of 22 Grade Five and Six kids from the school and one in Kensington on camp. “Every year I say this will be the last,” he joked. The kids stay up late and get up early but the camps have been going for 13 years and there’s a waiting list so he must be doing something right. He doesn’t go as far as pitching a tent, but he does spend three days on outdoor activities and teaching them about the role of the police. The aim is to keep kids on the right path as they go through important transitions such as the moves to secondary and tertiary education. “I have a connection with the community,” Nick said. “Some of the kids I work with need support. They need face-to-face. During the lockdown that wasn’t possible. It was an issue. We couldn’t engage with kids.”



▲ Detective Nick Parissis liaising between community and station.

He said he did Zoom meetings, but it wasn’t the same. “It sort of changed. We had to all of a sudden change how we did things. We couldn’t do face-to-face. Sometimes I feel the message wasn’t getting through.” During the lockdown, Nick joined others to attend demonstrations and walk the streets. The dynamics of Friday and Saturday night policing changed. “We didn’t have a program for it,” Nick said. “We evolved as the community evolved. A lot of people were really struggling because of the

lockdowns. We might have been the only people they spoke to.” He said it was also tougher policing because they stood out. “There were less people for us to blend in with, less people on the road.” He’s glad to be back in his normal job but has greater understanding of people’s problems. Police haven’t seen the surge in crime they expected so that’s something positive to come out of the lockdown. Communication skills are at the heart of his job, Nick said. “It’s the number one thing

The aim is to keep kids on the right path as they go through important transitions such as the moves to secondary and tertiary education.



they teach you, communications with children through to the elderly.” You had to assess quickly if a person was a “yes” person, he said. “If you pull over a motorist, they might be a ‘maybe’ person or a ‘no’ person. You have to be able to communicate.” His aim is to give North Melbourne Police Station a friendlier face by planting some flowers in the planter boxes outside. “I’ll have to get the night patrol to water them when I’m away,” he said ●



# Pet's Corner

## Meet Clara, the pub dog

“

*Clara the mini groodle loves being around people and will eat “literally anything”.*

”



WORDS BY *John Tadigiri*

Clara’s owner, Rhiannon Caynes, said she was from a breeder near Bathurst.

“She loves loves LOVES being around people. She likes to be as close to us as possible so will literally lie on top of us to snuggle on the couch,” she said.

“She is also very food orientated and will pull us into the local pet shops any time we are walking past because she usually gets a treat from them.

“She will eat literally anything. We had to train her early on not to eat food from the street or dead animals, but she loves cheese the most.”

Clara has grown accustomed to apartment life considering there is so much green space and tree-lined space in

North Melbourne.

“In saying that it has definitely changed our daily lives - we have to make sure she gets a walk morning and night and can’t rush out to social events straight after work anymore,” Ms Caynes said. Clara has a particular place she likes to hang out.

“She loves nothing more than going up to one of the local dog friendly pubs when we go for drinks with friends after work,” Ms Caynes said.

“North Melbourne is a great suburb to own a dog. There are heaps of off lead areas and it’s so nice being able to walk under plenty of shade on the tree-lined streets. “There are also heaps of great dog-friendly businesses to enjoy. You don’t have to really leave the dog at home, she comes with us most places now!” ●

### MELBOURNE ZOO

## Rescue success for zoo teams

*It’s been a busy start to the year for Melbourne Zoo’s veterinary and wildlife rescue teams.*

WORDS BY *Michael Zubreckyj*  
MELBOURNE ZOO  
CONTENT COORDINATOR

Vets at both Melbourne Zoo and Healesville Sanctuary are seeing an increase in the number of turtles needing treatment for serious injuries resulting from being struck by vehicles. The vets advise motorists to look out for the slow-moving reptiles and other wildlife on Victorian roads.

Melbourne Zoo veterinarian Dr Kate Bodley said there are more turtles, especially Eastern Long-necked Turtles, on Victoria’s roads at the moment because of an increase in breeding activity throughout summer and early autumn.

“Eastern Long-necked Turtles are frequently moving around and often end up on roads where they are susceptible to being hit by cars,” Dr Bodley said. “Because turtles are slow-moving, they can really get into trouble on roads.”

Healesville Sanctuary’s Australian Wildlife Health Centre sees between 30 and 40 of these cases every year. The Melbourne Zoo team recently spent several months treating and rehabilitating an Eastern Long-necked Turtle before releasing it back to its wild home.

The turtle was found by a member of the public laying injured on a road in Central Victoria and taken to a local veterinary clinic in Castlemaine before being transferred to

Melbourne Zoo’s veterinary department for treatment.

After X-raying the aquatic animal and determining that it had not suffered any internal injuries, the Zoo’s vets worked to stabilise its shell. The shell fragments, connected with wires and a strong-hold putty, allowed it to heal, much like a fractured human bone.

“We manage a broken shell in the same way you would manage any other fracture,” Dr Bodley said. “We try to manage any movement in the fracture sites and keep the area clean and dry as the bones heal.”

The turtle was rehabilitated over ten weeks before being released back into a creek in Central Victoria.

Several other turtles treated at Healesville Sanctuary have been successfully rescued, rehabilitated and released.

Melbourne Zoo’s Marine Response Unit (MRU) was involved in several successful animal rescue and release missions this year, including releasing a dolphin that became stranded at Greenwich Bay in Williamstown last month. The dolphin had been foraging for fish in the shallow water but got caught in an outgoing low tide.

Melbourne Zoo Marine Response Unit Coordinator Mark Keenan said the animal flailed in the shallow water as it tried to free itself. “When we first arrived, the dolphin was essentially stuck in the mud,” Mr Keenan said. “It was thrashing to clear itself and its blowhole of the mud and water so that it could breathe.”

Together with Victoria’s Water Police, Parks Victoria, and officers from the Department of Environment, Land, Water and Planning, the



Marine Response Unit placed the dolphin on a stretcher and then a boat to move it out to deeper water.

Mr Keenan said it took an incredible team effort to release the dolphin successfully.

“Sometimes dolphins are stranded because they’re sick,” Mr Keenan said. “In this case, it was a geographical stranding, so it meant that the animal was a lot stronger.

“It was a huge group effort. So many people came together to help. And it was wonderful to see a dolphin swim off into the distance and, seemingly, trying to catch fish upon its release.”

Last year, the MRU recorded the highest

number of callouts in its eight-year history, responding to 918 cases over 12 months and representing a 40 per cent increase in the volume of incidents from the previous year.

Anyone who sees an injured turtle on the road is advised to take it to the local vet or one of the Zoos Victoria veterinary facilities at Melbourne Zoo, Werribee Open Range Zoo and Healesville Sanctuary.

Anyone who sees injured marine wildlife should call the Melbourne Zoo Marine Response Unit 1300 245 678 ●



# Putting money back in local pockets

“With more than \$4000 worth of pre-loaded gift cards already in circulation, it’s been a promising start for the Precinct Gift Card, an initiative launched by North & West Melbourne Precinct Association (NWMPA) to drive dollars back into the local economy.”



After more than two years of uncertainty, the green shoots of economic recovery are finally starting to poke through in North and West Melbourne. It’s thrilling to see the precinct springing back to life after so much disruption. United by affection and ambition for the precinct, known by residents as “Melbourne’s best kept secret”, NWMPA’s mission is to support, connect and showcase local businesses. The goal focus for the next 12 months is to launch initiatives that encourage locals to further engage with the precinct and continue

to improve communication and networking opportunities for businesses. Despite lockdowns, it has been a busy 12 months for the volunteer-led NWMPA committee, rebranding the Association; planning future Activations to attract visitors to the precinct; delivering a Five-Year Strategic Plan; building a new NWMPA website; releasing reusable shop local tote bags and launching the Precinct Gift Card program. A first for the precinct, the pre-loaded gift cards ensure money is funnelled directly into

the pockets of local traders, rather than being spent elsewhere. It’s all about bringing attention to the array of goods and services available right here and encouraging residents and traders to support each other with their patronage, wherever possible. Featuring the “LIVE. LOVE. NORTH + WEST MELBOURNE” tagline and refreshed NWMPA branding, Precinct Cards make ideal presents for friends and family, or staff appreciation gifts. The recently launched NWMPA website also

signals renewed efforts to entice visitors back into the precinct. It connects member businesses to local suppliers and customers and features an online Business Directory. NWMPA members receive a free 12-month listing on the site. Our members include owners of cafes, bars, galleries, creative studios, boutiques, entrepreneurial professionals, industrial tradespeople, to name just a few. What links us together is a passion for this distinctive pocket of Melbourne. Initiatives like the Business Directory and Precinct Gift Card are funded primarily through City of Melbourne grants which are based on the number of memberships we attract. With 2022-2023 NWMPA membership now due, the membership drive is a critical time for the committee: the more members we can sign up, the more money we can redirect to support local business and the community. Priced at **\$60 plus GST for 12 months of NWMPA membership** and including access to business support, networking and promotional benefits, membership is a straightforward proposition for most local traders. In 2022-23 there is an added incentive – \$60 worth of Precinct Gift Cards are included with each membership, plus an extra \$30 for memberships paid before April 5. NWMPA 2022-23 memberships are now open. Join or renew your membership via **northwestmelbourne.com.au** And remember, join or renew before April 5 to receive \$90 worth of Precinct Gift Cards! ●

**For more information:**  
[northwestmelbourne.com.au](http://northwestmelbourne.com.au)

## PUBLIC HOUSING RESIDENTS’ NETWORK

# Victorian Government’s affordable housing levy

*The Victorian Government has introduced legislation to parliament for a new Social and Affordable Housing Contribution (SAHC) provision.*

A 1.75 per cent levy, starting on Thursday, July 1, 2024, is to be paid by all new residential developments over three dwellings and subdivisions of more than three lots in metropolitan Melbourne and the major regional centres of Greater Geelong, Ballarat and Greater Bendigo. Zero new public housing would be built under the levy. Zilch. The legislation also proposes to exempt Victorian social housing- including public housing- from paying rates to councils in these same locations. The Victorian Public Tenants Association (VPTA) and the Community Housing Industry Association (CHIA) have welcomed the rates exemption, with both saying it finally treats social housing as infrastructure. I feel both organisations are making a mistake in not assessing the real impact on the affected councils’ finances of the rates exemption. The Municipal Association Victoria’s (MAV) response to the announcement on the council rates exemption was one of dissatisfaction. “Disappointingly, the Victorian Government has walked away from its long partnership with Local Government, to provide services to the residents of social and affordable housing, by exempting itself from paying council rates and charges on almost 70,000 social housing dwellings across metropolitan Melbourne and the regional cities of Ballarat, Bendigo and Geelong,” MAV president Cr David Clark said.

“On the high-level numbers provided by the state government this morning, over ten years this will divert upwards of \$540 million away from vital council services such as parks, waste management, kindergartens, active transport and maternal and child health,” Cr Clark said. “Increased access to social housing dwellings is vital to relieving homelessness and having housing options for those in critical need – every Victorian agrees on that.” “But providing local services to these residents – the families and individuals living in these dwellings - is also critical. Social housing should be supported and subsidised by the Victorian Government, not just by the ratepayers of each municipality.” “The cumulative impact of this reversal on rates and charges, of other cost-shifting measures, as well as the financial constraints of the rate cap, once again places Council budgets in a no-win position when it comes to just maintaining, let alone enhancing, much needed community services.” “Communities are asking councils to do more than ever in their local areas while the state actively works to undermine their financial sustainability.” City of Melbourne Deputy Mayor Cr Reece and Cr Leppert have spoken out opposing the rates exemption. Cr Reece has said the change would reduce the City of Melbourne’s budget by \$2.2 million a year.

Cr Leppert said those councils that had been doing the most to facilitate new social housing within their municipalities would be hardest hit by the “blatant cost shift.” If the rates exemption does get through parliament, I envisage public housing residents will come under attack as being a burden on those who will most likely be asked to pay more in their own rates to recover councils’ lost revenue. With developers now opposing the levy, Premier Andrews is complaining that developers had supported the idea. Relying on developers to deliver public good outcomes is a pipedream that is set to become a nightmare for Labor. The most likely outcome (at the time of writing this column) is that this legislation will be defeated in the Upper House as Liberal and National Parties MPs are opposing it. They have no alternative policy and are only in a contest with Labor to be developers’ best friends.

**Inclusionary Zoning is a better way forward** The alternative to a levy like the one proposed is Inclusionary Zoning (IZ) which when mandated compels all large developments to include affordable housing. IZ legislation exists in Victoria with voluntary agreements encouraged between developers and councils to have up to five per cent of new stock to be affordable with both new public and community housing as options. Not being mandatory there have only been a few agreements reached in Victoria. By way of comparison, South Australia mandates 15 per cent under a Liberal government. A mandated IZ requirement on all large developments across Victoria would deliver more affordable housing faster and not put councils under financial pressure.

**Is public housing infrastructure?** I find this term hard to come to grips with. Public housing being equated with roads, bridges and hospitals doesn’t sit comfortably in my mind. I prefer to see public housing as a sure pathway to the human right to affordable, secure housing. This term was the headline of major Australian Housing and Urban Research Institute (AHURI) report a few years ago:



This report found that direct federal government investment in public housing was the best way to deliver what is urgently needed. Commonwealth Rent Assistance (CRA) would not be needed to make the new stock viable. Community Housing Organisations in Victoria claim CRA for their tenants in addition to charging tenants 30 per cent of their household income, compared to 25 per cent in public housing and no CRA. The continued move to have community housing organisations join with developers to take over and demolish existing public housing, only to charge residents more in rent and set up future federal governments for more going expense, needs to come to a halt in Victoria. I am looking forward to a federal election that will see a change in government to one that returns to public housing investment ●



Cory Memery  
[CORYMEMERY@YAHOO.COM](mailto:CORYMEMERY@YAHOO.COM)



PUZZLES & TRIVIA

Quiz



- 1. Name the two major stakeholders involved in delivering the Arden Precinct.
- 2. The City of Melbourne is running a pop-up trial in Errol St. What temporary items have been implemented there?
- 3. What is a dovetail joint?
- 4. What species is the third-tallest tree in the world, found in Tasmania, at 100.5m?
- 5. Who was the first Australian male tennis player to win the Australian Open?
- 6. In which year did Jennifer Lawrence (pictured) win the Oscar for Best Actress in a Leading Role?
- 7. What is the main ingredient in the sweet or savoury Chinese dish douhua?
- 8. If you wanted a beer from a brewery in Kensington, where could you go?
- 9. Which former Victorian Labor Minister from North Melbourne was recently awarded an Order of Australia?
- 10. Which Danish architect designed the Sydney Opera House?
- 11. Which iconic North Melbourne pub went up for sale in February 2022?
- 12. West Melbourne residents will soon have a new linear park. Which street is it in?

QUIZ SOLUTIONS

1. The Vic Planning Authority and the Department of Transport  
2. Planter boxes and seats  
3. A woodwork jointing technique  
4. Australian mountain ash  
5. Rod Laver  
6. 2012 (Silver Linings Playbook)  
7. Very soft tofu  
8. Henry St Brewhouse or Bonehead Brewing  
9. Brownwyn Pike  
10. Jern Utzon  
11. The Court House Hotel  
12. Hawke St

5x5

No. 009

Insert the missing letters to make 10 words – five reading across the grid and five reading down.

J		T		Y
	E		I	
D		A		A
	I		E	
D		E		S

SOLUTIONS

ACROSS: JETTY, AERIE, DRAMA, EIDER, DEEDS, DOWN: JADED, EERIE, TRADE, TIMED, YEARS.

PUZZLES AND PAGINATION  
©PAGEMASTERS PTY LTD  
PAGEMASTERS.COM

March, 2022

Sudoku

No. 009

Fill in the blank cells using the numbers from 1 to 9. Each number can only appear once in each row, column and 3x3 block

EASY

			9		2			
	9	4	7	6			2	3
			1				5	8
4		3					7	2
		8				5		
2	5				3			9
1	4				8			
3	2			7	6	8	9	
			5		1			

HARD

3					7		9	
2	9		5					
5		7	9					4
	2			5		8		
			7	1	8			
		1		9			6	
8					6	4		9
					9		2	8
	7		8					1

SOLUTIONS

EASY

9	4	2	1	3	5	6	7	8
1	6	8	9	7	4	5	2	3
5	3	7	8	6	2	9	4	1
6	8	3	4	1	9	7	2	5
4	1	5	7	2	8	3	6	9
2	9	6	5	8	3	4	1	7
8	5	9	3	4	7	2	1	6
3	2	1	5	9	6	7	4	8
7	4	6	2	1	8	5	3	9

HARD

1	3	9	5	8	4	7	2	6
8	2	7	6	3	5	4	9	1
6	5	4	9	1	7	2	8	3
7	9	5	2	6	3	8	1	4
2	4	6	8	7	1	3	5	9
3	1	8	4	5	6	9	7	2
5	1	7	2	8	3	9	6	4
2	8	5	1	4	7	3	6	9
6	1	9	5	2	8	7	4	3

Wordfind

Theme: US presidents

The leftover letters will spell out a secret message.

T	C	N	O	T	N	I	L	C	H	Y
L	R	B	B	H	T	N	T	A	O	D
I	E	U	A	D	R	O	F	R	O	E
N	A	S	M	I	U	S	A	T	V	N
C	G	H	A	P	M	L	T	E	E	N
O	A	L	B	J	A	I	E	R	R	E
L	N	U	S	A	N	W	P	O	L	K
N	O	T	G	N	I	H	S	A	W	H
S	M	A	D	A	T	Y	L	E	R	S
J	E	F	F	E	R	S	O	N	F	U
H	A	Y	E	S	N	O	X	I	N	B

ADAMS  
BUSH (TWICE)  
CARTER  
CLINTON  
FORD  
HAYES  
HOOVER  
JEFFERSON  
KENNEDY  
LBJ  
LINCOLN

NIXON  
OBAMA  
POLK  
REAGAN  
TAFT  
TRUMAN  
TRUMP  
TYLER  
USA  
WASHINGTON  
WILSON

Secret message: Chief.

Crossword

No. 009

ACROSS

- 1 Conduct (9)
- 6 Cuts (wood) (5)
- 9 Explorer Columbus (10)
- 10 Long fish (3)
- 11 Retention (7)
- 12 Ban (7)
- 13 Actor, — Flynn (5)
- 15 Courier; herald (9)
- 16 Related to government (9)
- 18 Reason (5)
- 20 Hold (7)
- 21 Establish truth (7)
- 24 Much — About Nothing (3)
- 25 Liquid present beneath the Earth's surface (10)
- 26 Loose garment (5)
- 27 Impediment (9)

DOWN

- 1 Dollars (colloq) (5)
- 2 Port (7)
- 3 View (5)
- 4 Layer that absorbs most of the sun's UV radiation (5)
- 13 Eager; anticipatory (9)
- 14 Sluggish (9)

1		2		3		4		5		6		7		8
9												10		
11								12						
13				14		15								
16		17								18		19		
20								21		22				23
24				25										
26						27								

- 5 Theatre practice (9)
- 6 Relating to the body (9)
- 7 Unwrapping (7)
- 8 Strong variety of acid (9)
- 15 Early Apple computer model (9)
- 17 16th US president (7)
- 19 Sparkle (7)
- 21 Principle; tenet (5)
- 22 More recent (5)
- 23 Amalgamate (5)

SOLUTION

C	O	N	D	U	C	T	S							
W	O	R	T											
E	X	P	L	O	R									
S	E	V	E											
W	H	I	N	O	C									
C	O	I												
1														
C	O	I												
R	E	D												
N														
H	S	I												
A	N													
T	E													
U	S													
S	P	O												

Codeword

No. 009

24	10	15	7	15	3	24		16	2	20	17	16
Y		2		13		20		24		3		11
24	15	4	21	14	3	15		24	19	18	3	15
8		8				15		15		12		20
15	7	15	3	24		23	18	19	23	15	3	8
13				8		17		8		23		
24	Q	14	16	3	15		11	15	16	8	17	24
		19		15		3		3				15
15	19	8	4	8	2	15		24	23	16	2	15
1		16		23		9				2		10
18	18	13	20	17		15	6	16	13	4	19	15
10		15		15		3		5		22		3
15	2	11	15	3		24	20	15	23	4	15	24

SOLUTIONS

Y	Q	Y	Q	Y	Q	Y	Q	Y	Q	Y	Q	Y
W	J	I	G	X	F	W	T	F	X	W	T	F
1	2	3	4	5	6	7	8	9	10	11	12	13

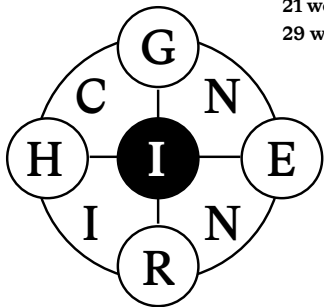
9-Letter

No. 009

Today's Focus:

- 14 words: Good
- 21 words: Very good
- 29 words: Excellent

Using the nine letters in the grid, how many words of four letters or more can you list? The centre letter must be included and each letter may only be used once. No colloquial or foreign words. No capitalised nouns, apostrophes or plural words ending in "s".



SOLUTIONS

Reference: Collins Concise English Dictionary

reining, rice, rich, ring  
icing, inch, inching, inhering, inner, neigh, nice, niece, niche, nigh, nine, heir, hinge, hire, hiring, icier, chin, chine, cringe, enrich, ENRICHING, geni, grin, heir, hinge, hire, hiring, icier, reining, rice, rich, ring



What's On: March

CROWD STANCE: RAFAELLA MCDONALD

Arts House  
521 Queensberry St  
North Melbourne 3051  
Free, Feb 1 - June 12

Rafaella McDonald's expansive installation Crowd Stance uses bold colour, intuitive mark making and cartoon-like outlines of the body in various moments of action.



QUEER

National Gallery of Victoria  
180 St Kilda Rd  
Melbourne 3006

Free March 10 - August 20

Queer shines a light on the NGV Collection to examine and reveal the queer stories works of art can tell.



BARK LADIES

NGV 180 St Kilda Rd. Melbourne.

March to April

Bark Ladies is an exhibition that celebrates the NGV's extraordinary collection of work by Yolngu women artists from the Buku Larngay Mulka Mulka Centre (Buku), in Northeast Arnhem Land.



SEEING EYE DOGS CARER INFORMATION SESSION

Seeing Eye Dogs Australia, 17 Barrett St Kensington.

Monday 21 March 12.00pm to 1.00pm

Seeing Eye Dogs is on the lookout for more breeder and training dog carers. If you're interested in being a future carer, contact 0428 010 843

ZERO LATENCY VR

22-32 Steel St, North Melbourne

Tuesday – Sunday, tickets \$59

Zero Latency is a warehouse-scale, free-roam, multiplayer reality gaming arena. Free-roam virtual reality lets players explore virtual worlds – they are taken inside a game.

EMU SKY

University of Melbourne, Old Quadrangle, Old Quad  
Parkville 3052, until July 31. Free

The Emu Sky exhibition tells its stories through art, research and storytelling, with more than 30 Aboriginal community members coming together to share their culture, knowledge and artistic practice.

TRANS AND GENDER DIVERSE WRITING GROUP

Fortnightly on Tuesdays 5-6pm

Online writing group via Zoom for trans and gender diverse young people. The workshop will also be for any other queer-identified people between the ages of 13 to 25 to connect and get writing. FREE



FREE THE PARK HOTEL REFUGEES

701 Swanston St, Carlton VIC 3053

Every night, 6pm.

Support the remaining refugees indefinitely detained in the Park Hotel through peaceful protest.

FRENCH CLUB

North Melbourne Library  
66 Errol St, North Melbourne 3051

February 5 - May 27, Fridays 1pm to 2.30pm. Free. Run fortnightly at North Melbourne Library, the French Club is an opportunity to explore French culture, improve your French language skills and make new friends.



PARKVILLE TENNIS CLUB

Parkville Tennis Club  
151 Royal Parade  
Parkville 3052  
Monday - Sunday, 6am - 11pm

Parkville Tennis Club on the edge of the central city is small and friendly, with three synthetic clay courts.

Business Directory

Politician

ADAM BANDT

FEDERAL MEMBER FOR MELBOURNE

142 Johnston Street, Fitzroy  
(03) 9417 0772  
adam.bandt.mmp@aph.gov.au

Precinct

NORTH + WEST MELBOURNE PRECINCT ASSOCIATION

Contact Us.  
info@northwestmelbourne.com.au

Post Office Box 5,  
North Melbourne  
Victoria 3051

Next Chapter

Tom Hirini — Director  
0481 192 060  
thenextchapter.com.au

School

SCHOOL OF LIVING MUSIC

A: 53 Little Baillie Street  
North Melbourne

Ph: 03 9329 0503

Email: info@livingmusic.com.au

ELLEN SANDELL

STATE MP FOR MELBOURNE

(03) 9328 4637  
office@ellensandell.com

146 Peel Street  
North Melbourne VIC 3051

Real Estate

Biggin & Scott KENSINGTON

For a clear path to success  
Kylie 0417 960 492  
Simone 0447 022 266  
Trevor 0456 377 780

QUEEN VICTORIA MARKET

For the best fresh produce, gourmet food and specialty shopping, you can't beat Queen Vic Market.

Open Tuesday, Thursday, Friday  
Saturday & Sunday  
with plenty of affordable parking.

QVM.COM.AU

SIMONDS CATHOLIC COLLEGE

CONTACT US  
Phone: +61 3 9321 9200  
Email: contactus@scmclb.catholic.edu.au  
Hours: Monday – Friday 8.00am – 4.00pm

CAMPUSES  
St Mary's 7-9 | 273 Victoria St,  
West Melbourne VIC 3003

St Brigid's 10-12 | 20 York St,  
Fitzroy North VIC 3068



# Next Chapter

Move in  
**Barkly Street**  
May 2022



Enquire  
Today



## 388 Barkly Street, Brunswick

No stone has been left unturned, with immense attention to detail from material selection to execution – Barkly Street is undoubtedly Brunswick's finest series of sustainable homes.

A superb selection of 3-bedroom residences remain.  
Enquire today to start your Next Chapter.

## Contact Us

Tom – 0481 192 060  
Imani – 0415 790 222

[thenextchapter.com.au](https://thenextchapter.com.au)



@nextchapterprojects