

# NORTH WEST CITY NEWS

northwestcitynews.com.au

Forever Free

Puzzles & Trivia P14



▲ Minister for Education Natalie Hutchins (centre) cuts the ribbon for the opening of the new North Melbourne Primary School campus.

## North Melbourne Primary School's new Molesworth St campus opens

*North Melbourne Primary School has celebrated the grand opening of its much-anticipated new Molesworth St campus and kindergarten facility, in what marks a big win for the community.*

WORDS BY *Brendan Rees*  
EDUCATION

The five-storey Prep-Grade 2 campus boasts state-of-the-art facilities, including modern classrooms, spaces for art and food technology, breakout rooms, and large indoor

and outdoor play spaces.

The \$36.12 million state government-funded campus also includes 18 general purpose classrooms, two mini libraries plus one full-size library, reading areas, specialist teaching spaces, a canteen, and staff workspace.

A separate fifth level is dedicated to kindergarten students and consists of custom-built, age-appropriate areas, as well as a sandpit and a cubby.

Netball courts and a basketball court including spectator seating are also key aspects of the campus, while a performance and gathering space is set to inspire the next generation of musicians and thespians.

In celebrating the opening, Minister for Education Natalie Hutchins joined the Minister for Early Childhood and Pre-Prep Ingrid Stitt, as well as the wider school

*Continued on page 7.*

## New green space proposed for Roden St in West Melbourne

*The City of Melbourne has proposed a plan to add more green space along Roden St, West Melbourne, with the community invited to have its say.*

WORDS BY *Brendan Rees*  
COUNCIL AFFAIRS

By expanding the existing open area from Spencer St to King St, the council aims "to create a larger, more beautiful and functional green space for the local community to enjoy".

The proposal would see the removal of paving and the conversion of roadway to create 1000 square metres of additional greening, including a new path, 44 new trees, water-sensitive urban design features, and bio-diverse garden beds.

To make the project happen, the council would need to reconfigure some of the existing car parks from the proposed closed section of Roden St's roadway to match the existing parking conditions towards Spencer St, however, all existing car parking spaces would be kept.

Public consultation on the Greening Roden St project is now open and closes June 15.

"We're listening to our West Melbourne residents and creating more green, open space to add to the livability of this fast-growing neighbourhood," Lord Mayor Sally Capp said.

"We know parks and gardens are key to creating healthy, happy communities."

The project is part of the council's commitment to increasing open space and tree canopy cover across the city, in line with the Open Space Strategy, Urban Forest Strategy, and the West Melbourne Structure Plan.



▲ A render of the proposed Roden St park.

The latest proposal follows the council endorsing plans in May to create a linear park along Hawke St, West Melbourne, which will stretch from Railway Place to King St.

Former Lord Mayor and chair of the North and West Melbourne Association Kevin Chamberlin said he knew Roden St well following his term with the council when plans were approved to initially transform the street into green space more than three decades ago.

"It is probably the first greening exercise in West Melbourne in decades," he said of the new plans.

"It's been well used and enjoyed over the years and now it's time for a well justified upgrade."

He said the surrounding area had changed significantly in recent times, with the west side of Roden St originally being almost exclusively residential, and the east side a mix of commercial and light industrial uses.

*Continued on page 10.*

LOVE YOUR NWC LOCAL, PAGE 03

### A The creatives crafting bespoke websites



ENVIRONMENT, PAGE 05

### B Flood inquiry submission



KING'S BIRTHDAY HONOURS, PAGE 06

### C Education stalwart honoured



HOUSING, PAGE 13

### D Public housing resident locked out



We Know The Local Market

For a clear path to success

Kylie 0417 960 492

Trevor 0456 377 780

**HYPERLOCAL**  
NEWS

**CONTACT**  
Suite 208, 198 Harbour Esplanade  
Docklands 3008  
northwestcitynews.com.au  
Tel: 8689 7980

**EDITOR**  
Sean Car

**PUBLISHER**  
Hyperlocal News Pty Ltd  
ABN: 57 623 558 725

**ADVERTISING**  
Hyper-local print works for advertisers in our digital world because local people are interested in local news. To sell to the North West City community, contact Jack Hayes on 0401 031 236 or jack@hyperlocalnews.com.au

Reader contributions are welcome. Send letters, articles and images to: brendan@hyperlocalnews.com.au

The deadline for the July edition is July 6.

**SOCIAL MEDIA**  
Follow us on Twitter @North\_West\_City\_News

Like us on Facebook northwestcitynewsmelbourne

Follow us on Instagram @northwestcitynews

Opinions expressed by contributors are not necessarily shared by the publisher.

hyperlocalnews.com.au  
admin@hyperlocalnews.com.au



# Beloved North Melbourne pub reopens doors

*North Melbourne's iconic Courthouse Hotel has relaunched after undergoing a major revamp, offering an authentic pub feel that locals have warmly embraced.*

WORDS BY *Brendan Rees*  
PHOTOGRAPHY BY *Maria Vasileva*  
BUSINESS

The venue at the corner of Queensberry and Errol streets has been turned into a welcoming pub, with an emphasis on keeping the original features intact such as the open fireplace and timber bar.

The pub's new management, which has entered into a 30-year lease, is the same team behind Naughtons Hotel in Parkville, including Ryan Moses, Rusty Sturrock (head chef), and Ryan and Laura Berry.

Mr Moses said the new-look hotel had been a hit with locals since its relaunch on May 19, with the renovation bringing the pub back to life.

"The support from the local community has been immense. People have been commenting on the warm, cosy, atmosphere with the pub; they are pleased to see it feels familiar but given a really big facelift," he said.

"I think everyone was sad when it closed down a few years ago and what I'm hearing now is that so many people used to come here 10, 15 years ago when it was probably the gastro pub in Melbourne, and they're really excited to see it back open again."

Mr Moses said the ground floor, which can accommodate up to 80 seated patrons, was up and running while works to refurbish the spaces upstairs, including a private dining room and two boutique guest suites, are expected to be completed by the end of June.



Overall, he said the pub was a unique and authentic venue that celebrated the rich history of North Melbourne.

The original timber bar has been stripped, sanded, and reoiled all by hand – a project Mr Moses described as a "labour of love" that "has come up an absolute treat".

On the bar is an ale hand pump, a method that has been used for centuries, offering ambient temperature beer that is less carbonated, which Mr Moses said had been "very well received" as "there's not too many pubs doing that kind of thing".

The open fireplace has also been reinstated and is alight every night as diners enjoy a gastro-style menu that offers the finest cuts of meat prepared on a parrilla wood-fire grill, which was custom made locally.

In other features, "Cockie" Duggan, the

infamous cockatoo who was a long-term resident at the hotel in the early 1900s, has been honoured in a framed artwork that adorns the ground floor dining area where historic photos of North Melbourne are also on display.

The sketch was undertaken by local artist Michelle Sturrock, the mother of Rusty Sturrock.

City of Melbourne Deputy Lord Mayor Nicholas Reece said, "With so many of Melbourne's heritage pubs coming under threat in recent years, it is with great delight that we welcome the reopening of the Courthouse Hotel."

"Many of us remember eating here in the mid-noughties when it was considered one of the best gastro pubs in Melbourne. I went back last week with an old friend from that era, and we had a glorious night out." ●

**QUEEN VICTORIA MARKET**  
*online*



**MARKET FRESH  
PRODUCE  
HOME DELIVERED**



What a great service, we love the fact we can order by 10am and get delicious, market fresh produce delivered to our door on the same day. It's so fun to open the box that is packed so nicely with no plastic and all of our favourite market goodies.

– Kate

**QVM.COM.AU/SHOP**



# Love your North West City Local



## The creative couple crafting bespoke websites for the not-for-profit sector

“Six years ago, husband and wife duo, Bel and Mike Temby combined their unique skill sets and formed Digital Services Lab, filling in a gaping hole in the not-for-profit sector.



WORDS BY *Kaylah-Joelle Baker*

With Bel's intimate knowledge of the not-for-profit sector and how digital applications work at the front end, and Mike being across coding and the behind-the-scenes processes, it made

perfect sense for the couple to combine their interests.

Now in charge of a tailored digital service, Bel and Mike work closely with not-for-profit and charity organisations in helping them to establish a digital presence through the development of a bespoke, functional website.

But what is most important for the couple is their ability to provide an affordable service that was not readily available previously.

“There is a survey done every year of not-for-profit organisations and there was such a huge gap in the smaller to medium not-for-profit organisations being able to really tap into the visually stunning and highly functional websites that catered to their users unique needs,” Bel told *North West City News*.

“We were trying to put together a business that was able to offer the services to the sector at a much more affordable rate than what you would get with bigger agencies.”

Digital Services Lab is a business that puts its clients and their needs first, and this is noticeable through the way it works alongside its clients.



“We work hand-in-hand with the client for the entirety of the project, so we can provide a high level of personalised support and can really get to understand the business and, more importantly, get to understand their clients,” Bel said.

“We then understand who their stakeholder groups are and what they're experiencing at the time they need that organisation, understanding that some of the organisations we work with are health or domestic violence organisations and some of their clients are very vulnerable.”

Working closely with the organisations means that Bel and Mike can understand a little more about what state of mind a person seeking the website may be in, and they can therefore personalise and tailor it accordingly.

Taking clients through this process also ensures that the overwhelming sensation of starting afresh is taken away, and they can know that they are in capable hands with Digital Services Lab.

Among the other services offered by Digital Services Lab, in addition to recreating or fixing

a website, are workshops and intensives in website strategy and search engine optimisation (SEO), website care plans, and graphic design.

Bel also works closely with other strategic partners to put together free webinars that can help organisations with instrumental tools of the trade.

While helping a sector close to her heart is vitally important for Bel, she said her passion and motivation was sparked every time she was working with a client and could see they were having fun during the process.

“It's such a nice feeling when they go off and present or launch their website to their stakeholders or boards and come back and say, ‘everybody thought it was amazing and loved what has been done’, all because we took a website that was sitting at zero, to one that has become a hero to their organisation,” she said.

Digital Services Lab occasionally works out of the co-working space Our Community House (OC House) at 552 Victoria St in North Melbourne. For more information:

[digitalserviceslab.com.au](http://digitalserviceslab.com.au) ●



# Shop the Precinct

Support our local businesses by gifting the ultimate gift card.

Visit our website to purchase and find out where and how to redeem your cards.



# CELEBRATING THE EXTRAORDINARY CONTRIBUTIONS OF MELBURNIANS

Entries are now open for  
the City of Melbourne's prestigious Melbourne Awards.

For more than 20 years, the City of Melbourne has celebrated inspirational individuals and organisations who have made a positive and valuable contribution to our city through the Melbourne Awards.

Each year, we are humbled by the extraordinary people and organisations that go above and beyond to make Melbourne such a sustainable, innovative and inclusive city in which to live, work and visit.

This year, we are looking to add more Melburnians to the honour roll.

Lord Mayor Sally Capp said the Melbourne Awards showcase some of the most driven and compassionate people in our city.

'Melbourne is full of innovators and creative minds, who are leading the charge to shape our city for the better,' the Lord Mayor said.

'Our Melbourne Awards shine a light on the extraordinary work of those who are going above and beyond in their field - improving community wellbeing, driving innovation and creating a more sustainable city.'

This year, organisations will be recognised in eight key areas: Community, Sustainability, Aboriginal Melbourne - ganbu guljin, Arts and Events, Knowledge and Innovation, City Design, LGBTQIA+, and a new category - Access and Inclusion - has been added this year, recognising the great work to make Melbourne more inclusive and accessible for everyone to enjoy.

Alongside the awards, entries for the Melburnian of the Year are now open - and for the first time - a Young Melburnian of the Year will also be crowned.

Among last year's winners were Reground a social enterprise embedded in the circular economy, and Kensington Neighbourhood House, for providing a place where people of all abilities, backgrounds and ages can participate.

Last year, Kuku Yalanji woman Antionette Braybrook was named as the top Melburnian for her work advocating to give a voice to Aboriginal and Torres Strait Islander people who have experienced family violence.



Entries are open until 23 June.  
To apply, visit [melbourne.vic.gov.au/melbourneawards](https://melbourne.vic.gov.au/melbourneawards)

## HOW TO GET YOUR FLU VACCINE

With a significant flu season predicted this year, we are now taking bookings for flu vaccinations through our new online booking management program VaxApp.

Bookings are now available for our community sessions, individual appointments and for the first time, on-site workplace immunisations.

Vaccination significantly reduces the risk of contracting influenza and passing the virus to family, colleagues and friends.

For more information and to book, visit [melbourne.vic.gov.au/flu vaccine](https://melbourne.vic.gov.au/flu vaccine)

QR code to book community sessions

# Residents move into new affordable homes in Kensington

WORDS BY *Brendan Rees*  
HOUSING

A new apartment building has been launched in Kensington, with the aim of helping to tackle the issue of housing affordability.

The building at 415-421 Macaulay Rd is part of the state government's Australian-first affordable rental initiative, offering renters modern, accessible, energy-efficient homes with capped rent and secure leases for at least three years.

Under the plan, around 2400 homes from the government's \$5.3bn "Big Housing Build" will become available to rent for low- to middle-income earners by July 2027.

Renters began moving into the 34 brand-new properties in Kensington in April, which is one of the first new Homes Victoria affordable housing developments launched by the Minister for Housing Colin Brooks.

He said the new homes gave eligible Victorians a "real rent security [while] helping them to feel safe, settled and happy".

"Kensington residents are the first of many thousands of eligible Victorians to access safe and secure housing as part of our affordable housing scheme, and it's wonderful to see them settling in and enjoying their new homes," Minister Brooks said.

"It's not an exaggeration to say this scheme is life-changing – affordable housing residents in Kensington have told me they can now afford to use their heating, can buy more nutritious food, or have started saving money for the first time."

Among those to have moved into the Kensington building is Julia Liddell, 23, and her partner Quinn, which she described as a "massive amount of relief".

She said the rent at their previous apartment in Hawthorn was going to go up by an extra \$300 a month despite the carpet being damaged, appliances not working, and having no heating or cooling.

"There was no energy efficiency whatsoever, so our bills were extremely expensive."

After two to three months spent searching for a rental apartment, she came across an online listing she thought was difficult to believe.

"I was like, 'this can't be real, how is this a two-bedroom, two-bathroom apartment for \$350 a week?'"



▲ *Julia Liddell, 23, and her partner Quinn, are among the new tenants to move into a new apartment building in Kensington being offered through Homes Victoria*

Ms Liddell, a casual retail worker and university student, said she had "tears" of relief when they were accepted for the Kensington rental, with their lease being locked in for three years.

"We're finally able to save, it's such a massive relief. Our bills used to be \$450 a month, now it's about \$150 if that – it is crazy."

Under the government's Affordable Housing Rental Scheme, rents in metropolitan Melbourne are set at least 10 per cent below the area's median market rent and capped at 30 per cent of the median income.

The program will provide housing for essential workers, including healthcare and disability workers, and ensure more people can access an affordable rental within their community and close to shops, transport, and employment.

All homes are built to modern and environmentally efficient design standards, including a minimum 6-star NatHERS energy rating, ensuring homes are cheaper to heat and cool.

The homes are managed by the Victorian Affordable Rentals Consortium. ●

# Council makes submission to Maribyrnong flood inquiry to ensure city is "ready and resilient for future flooding events"

*The City of Melbourne has made a submission to the parliamentary inquiry into last October's devastating Maribyrnong River floods, which outlines key recommendations for future flood mitigation and management.*

WORDS BY *Brendan Rees*  
ENVIRONMENT

The inquiry, an independent review run by Melbourne Water, is examining the causes and contributors to the flooding event on October 14, which caused widespread damage, with many homes and businesses inundated with water, including some properties in Kensington.

The review will focus on the catchment of the Maribyrnong River, as well as whether the controversial 2.5-metre-high Flemington Racecourse embankment flood wall that stretches two kilometres (built by the Victorian Racing Club in 2007) had contributed to the flooding.

It will also look at the role of emergency services, government policy, flood mitigation strategies, and the Victorian planning framework, with the inquiry's review panel expected to make its findings and recommendations to the state government in September.

A total of 63 submissions from community and stakeholders have been provided to the review panel.

City of Melbourne councillors unanimously endorsed the council's submission at their May 2 Future Melbourne Committee meeting, which Deputy Lord Mayor and planning portfolio lead Nicholas Reece said was important to further protect communities, assets, and waterways into the future.

"The 14th of October 2022 is a date that will never be forgotten here at the City of Melbourne," he said during the meeting.

"While other municipalities were even worse affected than we were, it still had a very significant and devastating impact on our community."

Through the submission, Cr Reece said, "We are very strongly encouraging the state government to regularly review and update the flood modelling state."

"Secondly, I do want to call out the need for Melbourne Water to work with developers and council to deliver good design outcomes in flood affected areas."

"Buildings need to be resilient to cope with floods but that doesn't mean building high street walls, fortresses lifting entire buildings off the ground and building an ugly, urban environment."

"Venice is a city that floods regularly and is truly one of the most beautiful cities in the world. We can, in Melbourne, build a city that is flood resistant and remains the same beautiful streets and beautiful buildings."

The council's submission lists various roads in Kensington that could not drain away stormwater during the floods due to the elevated water level in the river.

This included a section of Hobsons Rd and Smithfield Rd (the latter being close to the river and Government Rd), Kensington Rd (closer to Mercantile Parade including railway underpass), a section of Childers St (adjacent



to newly constructed rain garden and JJ Holland Park), and a section of Dynon Rd west of Dock Link Rd including the railway underpass.

It noted that a recently completed raised road section (bund) in Hobsons Rd close to the riverbanks had prevented flood water overtopping a section of the road.

The submission stated that the "key to making sound planning decisions in relation to all of the objectives, is the availability of accurate best practice data".

"A key question that should be addressed by this inquiry is whether the flood data in relation to the Maribyrnong River and all other catchments in the state is up to date and whether in light of climate change there are sufficient measures in place to mitigate the impacts of flooding," it said.

"This is a matter for the agency for all the catchment management authorities and Melbourne Water."

The council's environment and heritage portfolio lead Cr Rohan Leppert said the parliamentary inquiry was an "incredibly important matter" so that the state was prepared for future disasters.

"October 2022 was a stark reminder of what happens when one of our catchments floods quite considerably," he said.

"It has been a great test for the infrastructure we've been building especially since the '90s and the construction of the entirety of Kensington banks but also water-sensitive urban design and direct flood mitigation infrastructure in the Maribyrnong catchment as well – it really did stand up well."

But he added, "I'm not turning a blind eye at all to the impacts that the flood did have, especially on three businesses significantly in the West Melbourne industrial area, and of course, one residential property on Riverside Place in Kensington."

"We need to redouble our efforts to ensure that the city is well adapted and ready and resilient for future flooding events which will come."

Lord Mayor Sally Capp, said, "I really commend this report and the work that's gone into it to make sure that we're doing our best to ensure better outcomes in these extreme circumstances in the future, it's absolutely vital." ●

## Proudly representing the community in inner Melbourne



**Evan MULHOLLAND MP**  
MEMBER FOR NORTHERN METROPOLITAN REGION

Unit 10, 2 Graystone Court Epping Vic 3076  
03 9651 8242 | [evan.mulholland@parliament.vic.gov.au](mailto:evan.mulholland@parliament.vic.gov.au)  
[EvanMulholland.com.au](http://EvanMulholland.com.au) | [EvanMulhollandMP](https://www.facebook.com/EvanMulhollandMP)  
[@evmulholland](https://twitter.com/evmulholland)



Authorised by Evan Mulholland MP Member for Northern Metropolitan Region, Unit 10, 2 Graystone Court Epping Vic 3076. Funded from Parliamentary Budget.

# King's Birthday Honours

## Meewon makes a difference to the lives of asylum seekers and refugees

WORDS BY *Brendan Rees*  
COMMUNITY

North Melbourne's Reverend Meewon Yang has been awarded a Medal of the Order of Australia (OAM) for her service to Baptist Churches of Australia, and to refugee support services.

Rev. Yang, who serves as a multicultural consultant overseeing multicultural ministry within the Baptist churches in Victoria, has been a strong advocate for asylum seekers and refugees, while also working tirelessly to promote diversity and inclusivity in her community.

Born in South Korea before arriving in Australia in 1989, Rev. Yang said it was her study of theology at Whitley College in Parkville that drew her to "God's compassion and justice for the most vulnerable in our society".

Later, she co-taught a unit at the college titled "Asylum Seekers and Refugees", which influences other leaders to also advocate for people in these communities.

"Australia has huge resources, and we can give refugees a new chance at life by involving them and by voicing their concerns and this gives hope for us all," Rev. Yang said. "I also believe that as we give voice to our indigenous peoples we will grow as a nation welcoming refugees and migrants, and we will become stronger together."

She said being recognised for her services with an OAM as part of the 2023 King's Birthday honours list was a humbling experience, and something that came as a surprise.

"I am an ordinary migrant and a relatively new citizen of Australia and am very honoured. I want to acknowledge and appreciate the many people who have supported my journey."

One of Rev. Yang's first opportunities to help refugees was as a local minister at Brunswick



Baptist Church, starting the Somali Women's Sewing Group, which is still running today as the Multicultural Women's Sewing Group.

She also set up housing for asylum seekers in the church house next door, which continued for many years and then evolved into the Sanctuary project, now run by Baptcare.

Rev. Yang said she was grateful to have been employed by the Baptist Union of Victoria nearly 25 years ago to advocate for the wider refugee community and asylum seekers.

Her passion for these communities has continued to grow, and she has developed various initiatives including the refugee airfare and car loans scheme that offers interest free loans, as well as working as a member of the Australian Churches Refugee Taskforce.

Rev. Yang said was grateful for the opportunities she's had to work with people from different cultures while promoting social harmony, which recently included hosting an ecumenical and interfaith prayer service for the people of Myanmar, as the country's civil war has resulted in a human rights crisis and 1.3 million people being displaced.

The service, which was attended by hundreds of people, will "help give these communities a sense of support and hope", Rev. Yang said. ●



## A champion of outdoor play

WORDS BY *Rhonda Dredge*  
COMMUNITY

Children like playing outside in places where they can make the decisions about what they do, when and where.

Local resident Barbara Champion has been awarded a Member of the Order of Australia (AM) in the King's Birthday Honours list for championing outdoor play.

She is the former head of Play Australia which supports children's rights and those of play professionals.

She is outspoken about the fact that the community can be too risk-averse and parents not supportive enough of their children's right to be outside.

"So many children are completely controlled by their parents," she said. "They don't learn how to get on."

She says that play professionals, often in middle management positions in councils, need support in realising their ideas.

"It took 10 years for Port Phillip Council to

get a skate park created," she said. "It was a big issue. They were dealing with complaints. They did great work."

The issue for most councils is managing the risk and reducing liability in public spaces but at the heart of the debate is the recommendation that children spend at least two hours a day playing outside.

Ms Champion is in favour of pushing limits in playground design. "Twenty-five years ago, there was no knowledge about natural materials," she said. "Everything was manufactured abroad out of plastic and metal. Now play equipment is made locally."

Gardiner's Reserve in North Melbourne is a case in point. As a local resident, Ms Champion has seen it transformed to house a large sandpit with a freeform climbing frame in the centre made out of recycled timber.

Slides run down from pole houses and even the swings are hung from a slab of wood that appears to have been dragged straight in from the bush. ●

Continue reading online:  
[northwestcitynews.com.au](http://northwestcitynews.com.au)



## Education stalwart honoured by AM award

WORDS BY *Brendan Rees*  
COMMUNITY

Dr Peter Rogers was one of the first students who attended Monash University's campus in 1961 when its buildings were surrounded by paddocks.

Since embarking on his chemical engineering degree, the North Melbourne resident of more than 50 years has been a true leader in his profession.

Among his achievements and contributions to the industry has been his current role as emeritus chairman of Monash Engineering and IT Foundation at Monash University.

"I am deeply committed to achieving

equitable and quality education for all," Dr Rogers said.

"Education has a transformative impact in terms of what you can achieve in your life. Talented students are everywhere, and you have to reach out to find them."

In recognition of his work, Dr Rogers was awarded the Member of the Order of Australia (AM) as part of the King's Birthday 2023 honours list "for significant service to engineering, to education, and to the community".

He said he was humbled by the award, which he admitted came as an "delightful, unexpected surprise".

"I thought 'could this be true?' I needed to sit down to take it in," he said.

"It comes after a long life of doing interesting things supported by a wonderful family, my wife Cathy OAM, a cathedral organist, and daughters Anna, Elspeth and Hilary and their families."

Dr Rogers said one of his greatest satisfactions was launching the engineering leadership program with 20 industry-funded leadership and equity scholarships, providing students an "opportunity to make a difference in the world".

Speaking of his passion for North Melbourne, where his family's ties go back 130 years, he said: "North Melbourne is an under-recognised suburb - a sleeping giant - about to awaken with underground stations at Arden and Parkville, and recreational parks including Royal and Princes Parks". ●

## Senator Linda White



# YOUR VOICE IN THE AUSTRALIAN SENATE

*As a Labor Senator, my office is available to assist you with any Federal Government issues.*

📍 Level 1, 62 Lygon Street, Carlton South VIC 3053 📞 (03) 9639 2798 ✉️ [senator.white@aph.gov.au](mailto:senator.white@aph.gov.au)

👤 Senator Linda White 🐦 @lindawhiteaus



Authorised by Senator Linda White, ALP, Carlton.



### Parkville Gardens' Biggest Morning Tea perseveres despite bad weather

WORDS BY *Kaylah-Joelle Baker*

The Parkville Gardens Residents' Association (PGRA) hosted its Biggest Morning Tea on Sunday, May 21, raising \$904 for Cancer Council Australia, despite facing persistent rain and cold weather.

Held at Cade Square, the event saw more than 60 people come together, with more than 15 volunteers on hand with baked goods made specially for the occasion.

Ajith Vasanthakumar has been organising the event for three years, but said the events wouldn't be possible without the support of the volunteers.

"The Biggest Morning Tea in Parkville Gardens wouldn't be possible without my amazing neighbours who are always there to bake or brew or just lend a helping hand," he said.

"It is their enthusiasm that drives me to organise this event year after year. My special shout out to Kelly and Nishma who did most of the work behind the scenes and of course to my lovely neighbours who baked and braved the weather to turn up on a cold Sunday morning."

"I feel these events are multifaceted as it highlights not just the spirit of fundraising but also a great sense of community and belonging." ●

## North Melbourne Primary School's new Molesworth St campus opens

*Continued from page 1.*

community for a ribbon cutting ceremony to mark the occasion, after the new campus officially opened its doors on May 25.

The school's principal, Sarah Nightingale, expressed her excitement for the new campus, which she said would accommodate the growing community of families in the area.

"We are now focused on getting to know our new environment and further developing our routines before we look at ways we can integrate our two campuses, so all of our North Melbourne Primary School students can enjoy everything we have to offer at our two campuses," she said.

"The Grade 3 to 6 students at the Errol St campus are enjoying the extra space they now have for break times, and as a school, we will

be drawing on the students' ideas as to how we can best utilise the extra spaces for additional learning opportunities."

"It's been a long time coming and we are excited to see the many opportunities this campus will bring to North Melbourne Primary School."

Ms Hutchins said the new campus "further supports the community's needs, ensuring local students now and in the future have access to a high-quality education, close to home".

The City of Melbourne's education and innovation portfolio lead, Cr Davydd Griffiths, congratulated the school on the new campus, saying it was an "exciting development for North Melbourne and one that council very much welcomes".

"We know that education is one of the big reasons that people move to Melbourne and so

every new institution like this is something that we welcome," he said. "As more and more people move into the inner city, we needed new facilities and it's fantastic that the state government is investing so locals can have access to such high-quality education."

The Victorian School Building Authority worked with Wurundjeri Woi-wurrung Cultural Heritage Aboriginal Corporation on the campus design, which includes artwork by Ash Firebrace.

Funding for the on-site kindergarten was provided as part of the \$283 million investment in the Victorian 2019-20 Budget for kindergarten infrastructure.

Deputy Lord Mayor Nicholas Reece said, "This a wonderful new asset, which will serve the children and families of North Melbourne well for decades to come." ●

# Parkhill

# PREVIEW

# EVENT

## Thurs 15<sup>th</sup> - Sun 25<sup>th</sup> June, 10am-5pm

### NEW APARTMENTS - JUST COMPLETED, MOVE IN NOW!

- 🔍 Inspect fully furnished display apartments & rooftop resident facilities
- 🏠 Spacious brand new 1 & 2 bed apartments from \$515,000\*
- 📍 Live minutes from Flagstaff Gardens, Queen Victoria Market, RMIT & Melbourne Uni
- 👤 Mortgage broker in attendance (weekends only)
- ☕ Free Barista Coffee (weekends only)

**INSPECT** 408 Spencer St, West Melbourne

**Book Now!** [\*\*parkhill.com.au\*\*](https://parkhill.com.au)

BUY DIRECT FROM A MULTI-AWARD WINNING DEVELOPER

**CENTRAL EQUITY** 35 YEARS

DELIVERING AS PROMISED

\* Price as at 9 June 2023, until sold.



ADVERTISEMENT  
Your City of Melbourne community update

# DELIVERING FOR OUR COMMUNITY TODAY, SHAPING OUR CITY FOR TOMORROW

City-shaping infrastructure projects, our biggest events calendar and making the city safer, cleaner and fairer are highlights of the City of Melbourne's draft Budget 2023-24.



We've planned a full calendar of events so everyone can enjoy an affordable visit to the city.

## Our \$850.7 million draft Budget is delivering for our community today, while shaping our city for tomorrow.

In announcing the draft Budget, Lord Mayor Sally Capp said it was "designed to overcome the current economic challenges, while realising our community's aspirations for Melbourne – the nation's fastest growing capital city".

"Our draft Budget 2023-24 delivers on our commitment to create a bustling, inclusive and clean city today, while investing in a more affordable, liveable and prosperous future for our community," the Lord Mayor said.

"We're getting on with the things that matter most – making our city cleaner and safer, building better facilities and providing vital services, and boosting business with events and support."

We know Melburnians are feeling the pressure of mortgage and rent stress and rising household bills – and this has been front of mind through the development of this budget.

That's why we're doing what we can to limit the amount of increased costs that we pass on to our ratepayers.

By not passing on the full impact of inflation pressures, we will save households and families \$4.2 million.

## Rates keep our city running

Our teams work around the clock to deliver essential services – from waste and recycling collections to road works and street cleaning, public health and safety, and keeping our parks and gardens in great shape for everyone to enjoy.

Every Victorian council is facing the challenge of inflation rising faster than – and above – the current Municipal Rate Cap.

After two years of rates relief for residents and businesses and a modest

increase this year, in 2023-24 we will implement the State Government's 3.5 per cent Municipal Rate Cap.

Rates change every year as property values change. Property valuations are market-driven and determined by the State Government.

We will help ease the burden on pensioners by providing a rates discount of up to \$253.

Any ratepayer can apply for rate relief through the City of Melbourne Rates Financial Hardship Policy.

## A cleaner, safer and more caring city



It's our responsibility to get the basics right, so we're investing a record \$60.9 million to scrub the city clean, boost safety on our streets, and work closely with our communities to identify and act on the needs of each neighbourhood.

We're investing \$36.8 million to spruce up our streets and keep the city free from graffiti. This includes funding for our expanded Melbourne Clean Team along with more graffiti removal, street sweeping, and high-pressure cleaning of footpaths, roads and street furniture.

More than \$28 million will be invested to collect waste from residents and businesses, while an additional \$1.5 million will bolster

work to remove rubbish from our streets across the city, Docklands and Southbank.

We'll invest \$5.7 million to make our city a safer place for all. CCTV cameras will be installed in seven key locations in Carlton, including along Lygon Street and at Argyle Square. The expansion of our Safe City Camera Program will boost safety and reduce antisocial behaviour in response to community feedback.

Almost \$6 million will be spent on critical safety infrastructure and resources, including upgrading lighting in key precincts such as Bourke Street between Exhibition and Spring streets.

We're working with philanthropic partners and the Victorian Government to improve housing access and affordability through Homes Melbourne. This includes \$12 million towards our landmark Make Room project, which will convert a Council-owned building into safe and supported accommodation.

Our draft Budget also includes more than \$1.1 million to ensure rough sleepers have access to food, healthcare and other support services through partnerships with Melbourne City Mission and the Salvation Army.

## KEEP IN TOUCH

To stay connected with all the latest news from the City of Melbourne, follow us on social media and subscribe to *Melbourne News* at [news.melbourne.vic.gov.au](http://news.melbourne.vic.gov.au)

### Connect with us

[/cityofmelbourne](https://www.facebook.com/cityofmelbourne)  
[@cityofmelbourne](https://www.instagram.com/cityofmelbourne)  
[@cityofmelbourne](https://www.twitter.com/cityofmelbourne)





ADVERTISEMENT  
Your City of Melbourne community update



The new Food Hall at Queen Victoria Market is due to open soon.

### Getting on with city-shaping projects

**Melbourne is the fastest-growing capital city in the country. That's why we're getting on with delivering a strong pipeline of infrastructure projects to accommodate this growth and bring vital services closer to home.**

In 2023-24, we will invest \$247.5 million in infrastructure, supporting up to 1,000 jobs and creating economic stimulus now, while delivering much-needed community services and facilities for the future.

A \$60 million boost for the Queen Victoria Market Precinct Renewal program will ramp up works on a range of projects including new trader and customer facilities, as well as upgrades to the Franklin Street streetscape.

We'll break ground on our landmark Greenline Project with \$17 million for the first stage of works at Birrarung

Marr, creating an expanded riverside promenade. We'll also unveil The Greenline Project Master Plan outlining our vision for the city-shaping works.

We're investing \$28 million to get on with the new Kensington Community Aquatic and Recreation Centre, set to open in early 2025. The facility will feature a rejuvenated pool area, full-sized multipurpose courts, health and wellness areas, and a wrap-around café.

A further \$3 million will complete the city's brand-new Munro library and hub, which is set to transform the precinct with a state-of-the-art, 3,100m2 library, family services and community spaces.

Our investment also includes more than \$12 million for road and footpath maintenance, including \$3.2 million to upgrade footpaths and \$3 million to fix potholes and improve roads.



Our Business Concierge service will continue to support our city's small businesses.

### Backing business and attracting investment

**We're making it easier and more attractive to do business in Melbourne by cutting red tape and streamlining processes. A \$12 million boost to Invest Melbourne will bring new ventures and create jobs for the city.**

Small business owners are the heart and soul of our city, so we're expanding our Business Concierge service to support new and existing city businesses with a \$500,000 investment.

Since January, the Business Concierge team has provided free advice and mentoring to more than 15,500 city businesses – reducing the time it takes for a business to start up in the city and supporting them as they embrace Melbourne's new rhythm.

Our draft Budget also includes \$1.2 million for precinct associations to create more opportunities for business networking, education and training, and initiatives to encourage visitation and local spending.

We're making it easier to do business, with \$2.4 million to complete the Digital Permits Project, fast-tracking permit approval timelines and cutting red tape for traders and buskers.

We'll also continue to back the hospitality and retail sector with \$540,000 to continue efforts to reduce shopfront vacancies.

The Shopfront Activation Program has helped to reduce the city's shopfront vacancy rate from 31 per cent in November 2021 to 15 per cent. A total of 67 spaces have been activated with pop-up shops, creative offerings and bespoke displays.



We're committed to making Melbourne the greenest and most sustainable city in the country.

### A greener more sustainable city

**Our draft Budget includes a \$51 million investment to create new open space, protect parks, charge ahead with Power Melbourne and cut emissions.**

We love our parks, gardens and open spaces, they play an important role in making Melbourne more liveable which is why we're investing \$26.5 million to maintain them.

We'll spend \$16.5 million to secure new open space across the municipality, including pocket parks for Chapman Street, North Melbourne and Miles and Dodds Street Reserve in Southbank.

Construction will start on the Bedford Street pocket park, adding an extra 2,000m2 of open space in North Melbourne. In partnership with the State Government, the project will deliver play and picnic facilities, 48 trees and safer pedestrian crossings.

We'll also improve storm water harvesting across the municipality, collecting water from drains and roads to help irrigate and drought-proof the city's parks and gardens.

With support from the State Government, \$2.3 million will be spent on a stormwater harvesting project to drought-proof Princes Park in Carlton.

We'll invest \$1.1 million to continue the rollout of our popular Food Organics Garden Organics (FOGO) collection services into mixed-used residential and commercial buildings.

The program was introduced to more than 23,000 households and apartments across the municipality last year, diverting more than 1,500 tonnes of organic waste from landfill.

We're also charging ahead with plans to combat climate change and achieve net zero emissions, investing \$1.5 million in our landmark Power Melbourne project.

This year, we'll install the first neighbourhood battery at Library at the Dock, providing 100 per cent renewable energy to the community.

### Biggest ever events calendar

**We're delivering our biggest events calendar with \$28.2 million in festivals, activations and cultural celebrations to bring more people together in the city.**

This will cement our status as the nation's events and culture capital, boost our visitor economy and have flow on benefits for our retail, hospitality and small businesses.

All the city's favourite events will return bigger and better than ever – Christmas Festival, New Year's Eve

and Melbourne Fashion Week, along with a special anniversary celebration to mark 70 years of our much-loved Moomba Festival.

All the fun begins on 30 June when Firelight Festival will light up Docklands for a three-night celebration of the winter solstice. Followed by our new Now or Never Festival in August, with immersive experiences of art, ideas, music and technology in a series of free and ticketed events over city streets and venues.



We're planning a special celebration to mark the 70th anniversary of our much-loved Moomba Festival.

### HAVE YOUR SAY

Feedback on the draft Budget 2023-24 can be provided on Participate Melbourne until 11.59pm on Thursday 8 June.

After a special meeting of the Future Melbourne Committee on Tuesday 20 June to consider community feedback, the final Budget is expected to be endorsed by councillors on Tuesday 27 June.

Have your say at [participate.melbourne.vic.gov.au/our-plans](https://participate.melbourne.vic.gov.au/our-plans)

# Apollo Cafe goes from strength to strength

WORDS BY *Kaylah-Joelle Baker*  
BUSINESS

Apollo Cafe has been a highlight of West Melbourne since it opened in 2017, and now, under new management, it is reaching a whole new level of fame.

Nestled within the architectural landmark of The Mighty Apollo building, the cafe has been a constant for its modern Australian all-day menu and good coffee.

Originally opened by Russell and Cassie Spear, Apollo Cafe changed hands in February this year and is now under the ownership of Cam Walshe, Pollyanna Maulio, Johnny Quattro, and Tanase Adu.

As a West Melbourne resident and employee of another local business, Mr Walshe knows the café well, having been a regular customer prior to taking ownership.

While the new owners are keen to see Apollo Cafe continue to grow and reach more people, he said it had never been the new owners' plan to "come in and make big, massive changes".

"I think they [the previous owners] did lots of really good things. It's a great place, the building is sensational, the plants are beautiful, the culture of the staff was really great, and so I liked it as my local cafe," Mr Walshe said.

"There would have been a big risk if we came in and made these massive changes and turned everything upside down for the staff, so we have



been very deliberate in making small changes gradually and that's what we will continue to do."

For anyone who has come to rely on Apollo Cafe for great food and a positive vibe, the cafe still operates under the same chef and front-of-house manager, as well as many of the same staff.

However, it has made some changes to its opening hours, now throwing open its doors for service on weekends.

It will also host a special Whisky and Food

pairing event on July 8, which Mr Walshe expects to be the first of many new plans for future special evenings at Apollo Café.

"Our vision is for Apollo Cafe to be the place to come to in West Melbourne, and we are really grateful for the support the cafe has received over the past five years, and the additional support we have had in the last three to four months," Mr Walshe said.

"Everyone has been overwhelmingly supportive of what we are trying to do here."

While it's already a cornerstone of the West

Melbourne community, the cafe has also recently had its moment in the limelight thanks to an Australian romantic comedy film using its premises as a set.

Filming took place on June 13 and 14, and the excitement was not lost on the Apollo Cafe team with some members even getting to be on set. In addition to the main character of the film sitting within the cafe, Mr Walshe said the Apollo Café name would be included on the menus made specifically for the film.

"It's not like they have gone and created a new name or city, but rather, it will be the Apollo Cafe in West Melbourne [on screen], so that's really exciting," he said.

The essential move-in of the film industry has also meant surrounding businesses have been able to benefit from the influx of actors, extras, and film crew.

"I always say, 'a rising tide lifts all boats', and it's great to have filming in our local community and have it benefiting us all; plus, it is creating a bit of excitement and a good vibe," he added.

Apollo Cafe can be found at 109-111 Hawke St, and is open from Monday to Friday, 6.30am to 2pm, and Saturday and Sunday (including public holidays) from 8am to 3pm. ●

**For more information:**  
[apollocafe.com.au](http://apollocafe.com.au)

## Parkhill Apartments – brand new, just completed, and ready to move in

PROPERTY

Developer Central Equity has just completed an exciting new apartment project: Parkhill Apartments in West Melbourne.

Located on the corner of Spencer and Batman streets, these newly completed apartments are now open for inspection and sale. Tours are available of a range of fully furnished display apartments and the stunning resident rooftop facilities. Parkhill has been designed with liveability and convenience in mind – the project boasts beautiful rooftop resident-only facilities and spacious, light filled apartments with stunning city, garden, and bay views. Parkhill has been designed to meet the needs of young professionals, students, empty nesters, and the growing tide of young parents looking to raise their families in the inner city.

The apartments have an abundance of floor to ceiling glazing that provides extensive natural light and breathtaking views of Melbourne's inner city, east towards Flagstaff Gardens and south towards the CBD. All apartments come with a large balcony or terrace for outdoor dining or relaxation.

At street level, Parkhill will improve amenity on both Spencer and Batman streets with a range of retail tenancies and a striking podium.

Residents are greeted by an elegant architect-designed foyer with an onsite seven-day concierge. The building



has extensive security features including floor-to-floor secure access and is serviced by state-of-the-art lifts.

Residents will have exclusive access to the rooftop terrace which boasts views of the inner city as well as an extensive landscaped garden terrace, barbecue and dining areas, a gym and exercise areas.

The project encourages sustainable transport alternatives, with a generous amount of bike storage on site. Its city fringe location puts it walking distance to the free tram zone, Flagstaff and Southern Cross train stations and bus routes. Car parking is also available on selected apartments.

The development is also within walking distance of Melbourne's major universities including RMIT and Melbourne University, Haileybury College (City Campus), University High School, the city's employment and retail precincts, Flagstaff Gardens and Queen Victoria Market.

Parkhill is Central Equity's 86<sup>th</sup> major residential project over 35 years and is another example of delivering on what it promises.

To book your tour and be one of the first to inspect the fully furnished display apartments at Parkhill go to [parkhill.com.au](http://parkhill.com.au) or visit the onsite sales display at 408 Spencer St – open 7 days. There are a limited number of one- and two-bedroom apartments for sale from \$515,000. ●



## New green space proposed for Roden St in West Melbourne

*Continued from page 1.*

"That's all changed now and there's a significant residential component on the east side."

Mr Chamberlin said when the Roden St greening project was initially approved, one of the compromises made was to allow a former service station at the north-west corner of Roden and Spencer streets to retain its driveway exit point.

"That petrol station has long gone, and the driveway can now be converted to open space which was originally proposed."

He added, "this is indicative of the green opportunities in north and

west Melbourne that have resulted from the change in uses from industrial to residential."

These changes in uses also meant carparking was now situated in basements on Roden St rather than on the street, which "frees up a lot more roadway for open space, particularly the centre of the road". ●

**To have your say:**  
[participate.melbourne.vic.gov.au/greening-roden-street](http://participate.melbourne.vic.gov.au/greening-roden-street)

## ARE YOU A RENTER?

Victoria is experiencing a rental crisis. Rent prices are soaring and the number of homes available to rent is plummeting.

As your state MP, I'm fighting to make renting fairer and I need your help. Please scan the QR code and tell me about your renting experience.



**ELLEN SANDELL**

GREENS STATE MP FOR MELBOURNE

(03) 9328 4637  
office@ellensandell.com  
146 Peel Street  
North Melbourne VIC 3051



**THE GREENS**

Authorised by E. Sandell, 146 Peel St, North Melbourne 3051

HISTORY

# Rationing for our times

*Governor of the Reserve Bank Philip Lowe, desperately fighting a war against inflation, has suggested that financially stressed Australians could try to cut back spending.*

WORDS BY Felicity Jack  
HOTHAM HISTORY PROJECT

Once essential items such as rent are removed from the weekly budget, transport (use your feet), food, heating and clothing remain.

Eighty years ago, the whole of Australia was forced to adopt austerity measures to support another war effort with the introduction of rationing of essential items such as fuel (for heating and transport), food and clothing.

Heating is a problem today. Then, firewood could be scavenged for an open fire, but this is no longer allowed. One suggestion; this newspaper is free, so stuff it inside your coat or socks to keep out the cold.

Newspapers ran competitions or published recipes with novel ideas for stretching out a limited supply of ingredients. Fruit and vegetables weren't ever rationed so the rationale for this prizewinning recipe for a substitute for potatoes, published in *The Telegraph* (Brisbane) in October 1943, is unclear. Maybe, as in recent times, the price of potatoes skyrocketed beyond the reach of some families ...

"Into a cup of self-raising flour rub half a dessertspoon of nice clear fat and a pinch of salt, Mix into a paste with a little water. Make paste of scone consistency, cut into pieces, roll out like dumplings, and shape in the form of potatoes. Bake in meat tin after roast meat, fat and gravy have been taken out, leaving only a little gravy and fat in meat tin in which to bake until golden (about 15 minutes). They will be light, absorb gravy and will only leave a little fat. This quantity makes about 12 potatoes."

*The Newcastle Sun* published this recipe for a "very simple and nourishing steam pudding" in October 1944



cream was made from whipped and frozen condensed milk – a great treat in my family.

A friend, now in her 90s, remembers that clothes were difficult to buy on a limited number of coupons, but, as blankets were available, one was adapted to make a heavy dressing gown that she wore for a number of years. Her mother had a coat that went through three reincarnations. Her family were lucky to have relatives living in the country so there were regular trips to the railway station to collect boxes of fruit and vegetables. These were bottled using Fowlers preserving jars. She particularly remembers that her parents used boiled lollies to sweeten their tea.

Government advertisements were aimed at women who bore the brunt of these restrictions. The graphics may have changed, but, despite some progress, it is questionable how far the role of women has altered. ●

▲ Image: National Library of Australia

"Mix together with cold water the following ingredients: A cup of finely shredded suet, (the raw, hard fat found around the loins and kidneys of cows and sheep), two cups of flour and two-level teaspoonful of baking powder and a little salt. When well mixed roll out thin, line a basin with this pastry, and put in the middle a large cup of brown sugar. Cover with pastry, fold in well at sides and steam for two hours."

My family was lucky enough to have a fridge with a small freezing compartment and ice



METRO TUNNEL



# Metro Tunnel's Arden Station connects the past with the future

*The internationally renowned lead architect for the Metro Tunnel's five state-of-the-art stations says the "simplicity and beauty" of North Melbourne's industrial past has inspired the design for the new Arden Station.*

The station sits in the heart of Arden, which is set to become a thriving bio-medical and health sciences precinct accommodating up to 34,000 jobs and around 15,000 people by 2051.

The building sets the scene for a whole new area to be developed around it, while the station entrance's massive brick arches reflect North Melbourne's rich industrial history and character.

Principal architect at London-based firm Rogers Stirk Harbour and Partners (RSHP), Ivan Harbour,

who is overseeing the architectural design process for the stations, said Arden Station sits comfortably in its surroundings.

"It's not about imposing something that is alien to the place," Mr Harbour said. "We're using Arden's very recent industrial past to help inform the design decisions ... the simplicity and beauty of [Arden's] buildings is very apt."

Mr Harbour said the beautiful arches in the station entrance were inspired by 19<sup>th</sup> century British railway arches.

"It's been done with modern methods of construction; we're using big, prefabricated pieces, but we're still using the brickwork, which really is a reference to Arden's very recent history, as part of the industrial areas of Melbourne.

"As the city grows around it, it will help reinforce that memory of its recent past as an industrial place."

Melbourne will be home to five stunning new underground stations when the Melbourne Metro project opens in 2025, including Arden, each combining functionality, space, and natural light. ●

## NORTH WEST CITY NEWS

# Wish your inbox was more local?

### Well we have good news for you!

Scan the QR so you can stay Hyperlocal on the eNews!



# CASSETTE

BREAKFAST + LUNCH EVERY DAY.  
ZERO FOOD WASTE.  
TRY OUR NEW MENU.

● MAXIMUM FLAVOUR  
 WITH MINIMAL WASTE  
 ● BROADSHEET

@CASSETTE . KENSINGTON  
 399 MACAULAY RD.,  
 KENSINGTON

ARTS HOUSE



## Tea, coffee and cello: Neighbourhood Gathering at Arts House

*Arts House is hosting a free, light morning tea for the North and West Melbourne community on July 5.*

The Neighbourhood Gathering is a chance to meet the Arts House team and hear more about its forthcoming program. Co-artistic director Nithya Nagarajan, alongside locals Lorna Hannan and Jonathan Craig, will chat about the performances, exhibitions and talks on offer from August until December.

The morning tea is also an opportunity to enjoy a performance from cellist and composer Zoë Barry, ahead of her show at Arts House in September. Barry is an acclaimed and award-winning musician who has performed at esteemed venues and festivals across the world, including the Lincoln Center, the John F Kennedy Centre for The Performing Arts, Dark Mofo and MONA FOMA, Edinburgh International Festival and many more. ●

**For more information:**  
[artshouse.com.au](http://artshouse.com.au)

ENVIRONMENT

## The Kensington Farm Collective

*The Kensington Community Farm Collective was established in 2021 and is run by two local urban farmers who grow food across different sites in Kensington.*

The vision is to provide local and chemical free fresh food for our neighbourhood with limited food miles, packaging and waste.

It was established to increase the amount of local food grown to help those that experience food insecurity, and to also ensure that this community receives fresh nutrient rich food and not food that is one step away from the compost.

Currently Kensington is in the top five food insecure neighbourhoods in the City of Melbourne.

As land is limited in the inner city, the Farm Collective works with The Venny Inc., Unison and The Y and more recently the McCracken Street Food Garden (Kensington Neighbourhood House) which have access to land and this is where produce is actively farmed using permaculture principles.

The Farm Collective received a grant from the City of Melbourne in 2021, which enabled them to actively farm 60sqm of local land during COVID, producing more than 400kg of food over seven months. This food was distributed weekly to those people in Kensington who experienced increased hardship due to lockdowns.

Post the grant, the Farm Collective's activities have continued and they provide monthly about 50kg to the Kensington Community Fresh Food Market. This food is shared at

the market and a donation is sought for some items.

Any remaining fresh produce of the Farm Collective's that is not distributed at the Kensington Fresh Food Market is contributed free to the McCracken Street Pantry.

The Farm Collective harvests and grows as much as possible from local seeds saved. The urban farming work is mostly volunteer now as the funds received by donation go back into buying mushroom compost, mulch and seedlings for the farm. A portion of produce grown by the Farm Collective is shared freely with community. At the Venny, produce is harvested for programs, and directly by the community.

"The establishment of the Farm Collective is a deliberate strategy of ours to become part of the globalised movement of relocalising our food. This will strengthen our community's health and reduce the pollution, waste and social inequity which is being created by globalisation," Alicia Rogers of the Farm Collective said.

The Farm Collective's values are caring and supporting the earth and community with fresh grown food and working together for our local community.

The Farm Collective's vision is to find more local land to farm and become sustainable.

The Farm Collective is looking for more urban farmers, if this vision speaks to you, please contact Jacqui van Heerden. ●



Jacqui van Heerden

CO-CONVENER OF TRANSITION TOWN KENSINGTON

JACQUIVANHEERDEN@GMAIL.COM



CRITIC

## Landscape show reveals travesty

*A curated show can enhance the message of an exhibition by including an analysis or statement about the artists' intentions.*

WORDS BY Rhonda Dredge

The curators at One Star Gallery combined scenes of the central Victorian plateau with painterly texts in their latest show.

This is an unusual combination in that the texts appear to be expressive and the landscapes traditional.

The texts are in the Colin McCahon tradition with a touch of Marie Laurencin from Paris, and they fit well into a modernist approach that favours the surface of a canvas.

In the invitation to the show, the curators mentioned that the landscape paintings were done by Jason Jones in response to a threat.

The artist confirmed that a plan to build transmission towers across the volcanic plain near his home in Smeaton galvanised him to action.

He has done 20 paintings of the scene through his studio window in one direction and a key work documents the yellowing hills and creek beds that cross the plateau.

The activation of Jones' feel for the craft of landscape painting by this real threat to its integrity is moving and pertinent.



"It shows the reality of the alternative energy push on the environment," he said.

He and other locals appear to be fighting a losing battle for the power lines will be used to carry electricity from a nearby wind farm, highly visible upon the top of a hill.

Landscape painting, a tradition some believe

to have reached its limits, has in the hands of this curator become a political issue as artists move out to document places they love before the techs move in.

Jones says he has been living in Smeaton for 20 years and that even the viability of this small town has been threatened by the recent closure of their pub.

The plight of these landscapes, often the only real solace for those stuck in the big city, is real and pressing.

The art serves to document what will go – the pleasure of viewing the earth with little sign of humans except for a quiet country road.

Tragedy is in the offing and Jones was in Melbourne to raise awareness of what could be lost with an artist's talk on June 10.

*Bullarook Landscape* is a view of the creek near his house that flows into Newland Reservoir. "After 20 years I feel like I'm a part of the place," he said. ●



### PROPOSAL TO UPGRADE EXISTING MOBILE PHONE BASE STATION WITH 5G AT THE FOLLOWING LOCATION

**355 Spencer Street, West Melbourne VIC 3003**

[www.rfnsa.com.au/3003002](http://www.rfnsa.com.au/3003002)

- The proposed upgrade to the existing facility consists of the following works; replacement of three (3) existing panel antennas with three (3) 4G panel antennas (each no longer than 2.8m) on new antenna mount, Installation of six (6) new 5G panel antennas (each no longer than 2.8m) on new antenna mount and associated ancillary equipment, including new Remote Radio Units and one (1) new GPS antennas, reconfiguration of existing equipment on the facility and within the equipment shelter and removal of existing Remote Radio Units and one (1) GPS antenna.

Optus and Vodafone regard the proposed installation as Permit Exempt in accordance with the section 52.19-1 of the Victoria Planning Scheme Provisions based on the description above.

In accordance with Section 7 of C564:2020 Mobile Phone Base Station Deployment Code, we invite you to provide feedback about the proposal. Further information and/or comments should be directed to: BMM Group, 1300 260 834, [submissions@bmmgroup.com.au](mailto:submissions@bmmgroup.com.au) by **30th June, 2023**. Further information may also be obtained from the website provided above.

## ASP PUBLISHING SERVICES

BOOKS • REPORTS • THESES • PERIODICALS • ARTICLES • BROCHURES

Editing, Design, Production, Printing & Publishing Services for  
Law, Finance & Business | Art Galleries & Museums  
Cultural Associations | Welfare Organizations  
Universities & Colleges | Professional Writers  
Scientific & Technical Research Institutions

**TO DISCUSS YOUR PROJECT, PLEASE CONTACT US:**  
**(03) 9329 6963 | [enquiry@scholarly.info](mailto:enquiry@scholarly.info) | [www.scholarly.info](http://www.scholarly.info)**

ASP PUBLISHING SERVICES IS AN ARM OF AUSTRALIAN SCHOLARLY PUBLISHING Pty Ltd,  
A LEADING INDEPENDENT BOOK PUBLISHER (est. 1991)  
ACN 49 079 997 756 / 7 Lt Lothian St North, North Melbourne 3051

KENSINGTON ASSOCIATION

# The 2023 Referendum and respectful conversations

*“... good information and good listening will produce a good result for all Australians ...”*



At the most recent Kensington Association meeting we unanimously supported the following motion – “that the Kensington Association formally endorse federal constitutional recognition for First Peoples through a Voice to Parliament as a first step towards justice and self-determination for Aboriginal and Torres Strait Islanders”.

For the past three editions of *North West City News* the Kensington Association (KA) column has focused on issues around “reconciliation” and the coming referendum. We consider that respectful conversations are of critical importance in this period leading to the Referendum – probably in October.

Teaming together with the Kensington Reconciliation Action Group (KRAG) and other community groups, we have set ourselves the task of facilitating such conversations.

While we are advocates (soft or strong) for the YES campaign, rather than sermonise, our aim is to provide good information and good listening to community concerns.

We believe this will minimise divisive or partisan interaction, as well as best promote the YES campaign. To that end I would like to point readers to some excellent sources of information.

Reading (or listening to) the Uluru Statement from the Heart from 2017 National Constitutional Convention is an important first step. I find it inspiring.



For me, what jumps out of this statement is its generosity. After explaining about the ancestral link to the land, the Statement follows with ...

“This link is the basis of the ownership of the soil, or better, of sovereignty. It has never been ceded or extinguished and co-exists with the sovereignty of the Crown ... we believe this ancient sovereignty can

shine through as a fuller expression of Australia’s nationhood.”

Wow ... that’s like owning and caring for your farm for 300 years and being prepared to share that “ownership” with someone who rolls up with guns and takes over your farm. The raiders then kind or share it with you but treat you abominably and try to eliminate you. But after just one year you (the original owners) say that you are happy to share ownership of the farm for the benefit of everyone.

There has been some bemoaning of the lack of information about “the Voice” and why the federal government has not given much detail. The following link takes you to an excellent presentation – “Everything you need to know about the Voice”.



The KRAG and KA wish to encourage respectful conversations with all members of the community, to that end some of us will be putting up our hands to host “Kitchen Table Conversations”. See [togetheryes.com.au/get-involved](http://togetheryes.com.au/get-involved). Although part of the YES campaign you will discover these are open and respectful of different perspectives and give everyone a chance to listen and learn.

One Quick Stop Shop - access links in this article see below ... ●

**For more information:**  
[tinyurl.com/y74c27t](http://tinyurl.com/y74c27t)



**Simon Harvey**  
CHAIRPERSON  
INFO@KENSINGTONASSOCIATION.ORG.AU

PUBLIC HOUSING

# Resident locked out after flying overseas to be with dying mother

*A North Melbourne public housing resident who travelled to Sri Lanka to be with his dying mother was left homeless after being evicted from his flat upon returning 12 months later.*

WORDS BY *Brendan Rees*

Desmond Ratnam, 62, said the housing system failed him after finding his Canning St unit had been repossessed, leaving him nowhere to go because he had been “uncontactable” while overseas.

He said all his belongings were thrown out, leaving him to sleep in a park for months while being told he would need to reapply for public housing.

According to Mr Ratnam, he said he had informed the North Melbourne housing office of his travel plans before flying out in December 2021.

But he got stuck overseas due to complications from COVID-19, political unrest in Sri Lanka, and the death of his mother and the responsibility for her affairs.

“I came back after one year’s time; my mum was sick and dying. Then I came to my flat and it was locked,” he said after arriving back in January this year.

“I was very upset.”

Desperate for help, Mr Ratnam contacted the office of Melbourne Greens MP Ellen Sandell whose team fought hard to get him a home at the North Melbourne towers.

“When I first heard Desmond’s story, I was shocked at



▲ Desmond Ratnam is grateful for the help of Melbourne Greens MP Ellen Sandell finding him a new home. Photo: Maria Vasileva.

how cruel the current broken housing system can be,” Ms Sandell said, adding she was pleased to be able to help Mr Ratnam find a new home.

“This is exactly why the Greens are pushing Labor so hard for a rent freeze and significantly more investment in public housing.”

A Department of Families, Fairness and Housing (DFFH) spokesperson said when Mr Ratnam moved overseas, the “department attempted to contact him over several months but was unsuccessful”.

“As we couldn’t make contact, we applied to VCAT (Victorian Civil and Administrative Tribunal) to regain possession of the property,” the spokesperson said.

“On becoming aware of the renter’s situation on his return from overseas, department staff provided emergency housing information for his immediate needs and assisted him in reapplying for housing as a priority applicant.”

“Shortly after receiving his application, the department offered the renter a property in North Melbourne.”

According to DFFH, public housing renters who are going to be away from their home for more than six weeks need to complete a temporary absence form. ●

PARKVILLE GARDENS RESIDENTS’ ASSOCIATION

# Matters shaping Parkville Gardens

*This month’s column is more of a glance beyond, rather than within, Parkville Gardens.*

WORDS BY *Tom Knowles*

The Parkville Gardens Residents’ Association (PGRA) is in a quiet phase for the moment, though life keeps ticking over for those who live here. The arrival of winter hasn’t driven locals into hibernation!

One item of news from here is that the construction of the social housing tower at 51 Galada Ave is expected to be completed by July 17. Occupation will take some time after that.

There’s action happening nearby. The City of Melbourne has completed

its series of Royal Park safety audits. The information gained will lead to a discussion paper for further consultation. This in turn will contribute to the development of a new Royal Park Master Plan. The current one dates back to 1997; well and truly time for an update!

The timeline is ambitious. The aim is to have the new one drafted, put out for community consultation and finalised by mid-2024.

There are two major transport projects in the planning stages that will impact on Parkville Gardens residents, along with many others. One is the review of the Royal Park Station precinct. This is a complicated piece of infrastructure adjacent to the Zoo where trams, trains, vehicles, cycles, golf carts and foot traffic all intersect. It’s well overdue for attention.

The other venture is bigger still.

It’s the Brunswick Level Crossings Removal Project, and the one that will impact local residents most directly is the Park St crossing.

It’s proposed to construct an elevated rail bridge that will descend into the cutting that leads to Royal Park Station. This will have lasting impact on the flora and fauna and amenity of the northern corner of Royal Park, as well as significant temporary consequences for local residents, commuters and road users.

On May 16, councillors endorsed a slightly amended 37-page Position Paper to submit to the Victorian Government. See draft: ●



**Flora Indian Restaurant & Cafe**

The Flinders Street footpath will be closed to way-through foot traffic at the Metro Tunnel site entrance between Swanston and Degraves streets from 29 May to mid-September.

Flora will still be open to meet all your Indian food cravings. Immerse yourself in the sensory delight of Indian food with a range of fresh curries, breads and snacks.

📍 **238 Flinders Street, Melbourne**  
☎ **03 9663 1212**  
[www.floraindian.com.au](http://www.floraindian.com.au)

**SHOP LOCAL**

Construction partner:  
**Design & Construction**

**Supporting business**

CYP-B500338



# What's On: June 2023

## Community Calendar



EVERY THIRD SUNDAY OF THE MONTH, 10AM - 3PM

### KENSINGTON MARKET

For a market that highlights the produce and artwork of its wonderful inner-city makers community, be sure to come down as you'd be sure to find something you love.

**Kensington Town Hall**  
30-34 Bellair St



EVERY MONDAY AND WEDNESDAY, 10:30AM - 3PM

### SONGBIRDS

Songs, rhymes and stories will engage your budding bookworm's mind and introduce them to the fun and rhythm of language. For babies and toddlers to 18 months old; no bookings necessary.

**North Melbourne Library**  
66 Errol St

EVERY TUESDAY, 10:30AM - 11:15AM

**PRESCHOOL STORYTIME**

Share the wonder of books with your preschooler at storytime, with stories, songs, rhymes, and activities.

**North Melbourne Library**  
66 Errol Street



**THE CENTRE**

A not-for-profit offering programs and activities that respond to the needs of the North & West Melbourne community, providing an accessible and inclusive agenda which fosters belonging and community spirit.

**58 Errol St, North Melbourne**  
[centre.org.au](http://centre.org.au)



EVERY THURSDAY, 10:30AM - 11AM

### STOMPERS

Come along for an energetic 30 minutes of stories, songs, rhymes, music, and most of all, fun. Ages 18 months to 3 years.

**North Melbourne Library**  
66 Errol Street



SECOND MONDAY OF EVERY MONTH (UNLESS PH), 1:45PM - 3:45PM

### ORGAN CLUB

Fun and entertaining musical afternoon, with music to suit all tastes. Afternoon tea to follow. \$8 incl afternoon tea. Contact: 9307 8207.

**Kensington Neighbourhood House**  
Upcoming Dates: June 19 and July 10

OPEN MONDAY TO SUNDAY, 6AM - 11PM

**PARKVILLE TENNIS CLUB**

A small friendly tennis club located just outside the CBD on Royal Parade. Individual, student, concession and family memberships are available.

**151 Royal Parade, Parkville 3052**  
[tennis.com.au/parkvilletc](http://tennis.com.au/parkvilletc)



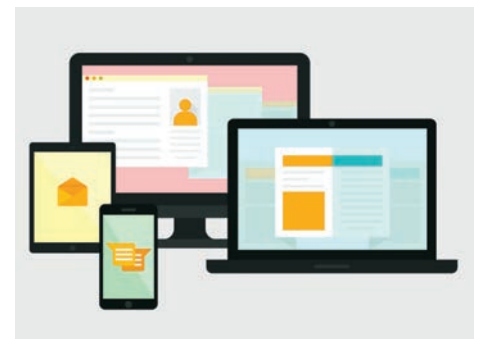
EVERY MONDAY, JUNE TO NOVEMBER

**CONNECT CAFE: TECH I.T HELP**

If 55+, learn new skills on your mobile, tablet device or laptop through the topic workshop (10am to 12pm) or an individual one-hour session (9am to 12pm) - alternating weeks. Light morning tea provided.

Book: (03) 9328 1665

**Jean McKendry Neighbourhood Centre**



# Business Directory

## Health & Fitness

## Precinct

## Politician

## Real Estate

## School

## Shopping

# North West City Local

## Tips from a garden bomber

“

*Not everyone appreciates the spirit that has gone into the flower pot bombing of Little Provost St in North Melbourne.*

”

WORDS BY Rhonda Dredge

What started as a few planter boxes has now spread down the street and around the corner.

This impromptu garden has sprung up in the past 15 months, long enough for caterpillars to move in and seeds to be dropped by birds.

Evolution loves an empty space, and the designer Lydia Rowe is one of a group of residents breaking out into the street.

Residents on the corner of Adderley and Abbotsford streets are applying for a street garden and one

has already blossomed on Courtney St.

Street gardens are all the rage, and they are permitted by the City of Melbourne, with a site inviting applications.

“I call them permitted pots for pleasure,” Lydia told *North West City News*. “This is my church.”

The 73-year-old moved here from Hawthorn and said she had found her tribe in the back streets of North Melbourne.

“It’s the community everyone would like to be in,” she said. “I feel like I’ve been here for 20 years. It’s only 15 months.”

Chris from the local bookshop stops by on his way to work and the pots reach out to others including residents of houses backing onto the nearby lane where attractive displays have sprung up.

“Community gardens abound with found objects,” Lydia said, pointing out an old chair she uses for ripening tomatoes. She advises using the rustic surfaces of walls as backdrops for climbers and colourful displays.

The only complaints she has received about her exuberant plantings are from “entitled” millennials who don’t know how to park their cars. “One told me recently to move my pots. I told her to park elsewhere.”

Lydia is a cook and a gardener, two



activities she said often went together. Her tiny 1850s cottage backs onto Little Provost St and she prefers to be outside.

She has garlic just sprouting, Brussels sprouts about 60 cm tall, and boxes of seedlings as well as lettuce and spinach.

“It’s easy to get a permit,” she said. “The council were very accommodating. They emailed me a form. They made it very easy for me to apply. It didn’t cost anything. I put up a sign for six weeks to see if there were any objections.”

A permit for a garden on a nature strip may take longer. The council will send out an arborist to assess the impact of any planter boxes on nearby trees.

But don’t be surprised if Codling moths are quick off the mark in discovering that you are reclaiming a previously unused space.

When you are pushing boundaries, you need to be quick off the mark in protecting your new nature spot. ●



For more information:



## Dynon Road closed in both directions

! From mid-June to late-August



Dynon Road between Dryburgh St and the CityLink inbound exit ramp will be closed in both directions from 8pm Friday 16 June to 5am Thursday 31 August so we can continue strengthening the Dynon Road Bridge.

Buses will also replace trains on the Werribee, Williamstown and Sunbury lines from 8pm Friday 23 June to last service Sunday 9 July. Delays are expected.

### Thanks for your patience

We’re widening the bridge at Dynon Road over the rail lines to build new connections to the city as part of the West Gate Tunnel Project.

Visit [bigbuild.vic.gov.au](http://bigbuild.vic.gov.au) for more information, including detour routes and closure times. Please note that dates and times are subject to change.

In partnership with:



Keep in mind there are other disruptions during this time.

Find a detailed list at [bigbuild.vic.gov.au](http://bigbuild.vic.gov.au)



Authorised by the Victorian Government, 1 Treasury Place, Melbourne