

NORTH WEST CITY NEWS

northwestcitynews.com.au

Forever Free

Puzzles & Trivia P14



A new community centre is coming to North Melbourne

North Melbourne will soon be home to a new community hub as the City of Melbourne looks to meet the diverse needs of the area's fast-growing population.

WORDS BY *Brendan Rees*
PHOTOGRAPHY BY *Maria Vasileva*
ENVIRONMENT

The proposed multi-use facility – which would be double the size of the current community centre – would be built at the current site of the Jean McKendry Neighbourhood Centre and Hotham Hub at 91-115 Melrose St and feature large community function spaces, meeting rooms, and a commercial kitchen.

Once complete, it will provide a range of new and expanded community services including maternal child health and family services, youth services in partnership with Drummond St, and ageing and inclusion services.

Construction is expected to begin in the next 18 to 24 months subject to planning approvals, however no completion date has been announced at this stage.

Activities and programs currently being run at the Jean McKendry Neighbourhood Centre and Hotham Hub would be relocated to nearby facilities during construction and replaced in the new community centre.

The council has allocated \$21 million and a further \$10 million in grant funding for the project over the next three financial years.

Further funding may be assigned in future years, but once design has been completed, the council said it would have a clearer picture of the likely costs for the project, and will share this information with the community.

Continued on page 4.

Kensington among top 40 suburbs at "high risk" of floods, study shows

More than 100 properties in Kensington are predicted to be at "high risk of damage" within the next 17 years as rising sea levels and floods were expected to intensify, a new study shows.

WORDS BY *Brendan Rees*
ENVIRONMENT

The finding was revealed in a recent report commissioned by the Victorian Marine and Coastal Council (VMaCC) and Life Saving Victoria (LSV) with researchers warning that, if no proactive measures were taken, the consequences could be devastating for affected residents and the economy.

According to the report, which included research from the University of Melbourne and consulting firm Climate Risk, it is estimated that by 2100, 151,000 Victorian properties (residential, commercial, and key infrastructure) could be at high risk of damage from rising sea levels and more "frequent and dramatic storm surge and flooding" due to global warming.

The report listed the top 40 suburbs that had the greatest number of properties at high risk of flooding by 2040, in which Kensington was ranked 28th.

It forecast that 2367 properties in Kensington could be exposed to flooding, of which 126 were at high-risk, resulting in a potential damage bill of \$2.1 million.

In neighbouring areas, Southbank, which is located next to the Yarra River, was ranked as the number one suburb with 16,646 properties at high flood risk within 17 years, followed by Docklands (3270 properties), which combined, could tally up more than \$8 million in damages.

Kensington and North and West Melbourne are divided by Moonee Ponds Creek and the Maribyrnong



▲ *Flooding in Kensington in 2022.*

River, which runs along the western border of Kensington.

According to the Victoria State Emergency Service (VICSES), parklands help to absorb much of the water that helps avoid some flooding in the area, however the flat terrain around the Maribyrnong River makes it easier for flood water to spread in very large rain events.

The Maribyrnong River Flood Review is currently examining the causes and contributors to the flooding event on October 14 last year that devastated Melbourne's inner west, and flooded parts of Kensington and West Melbourne.

In response to the report, the VMaCC and LSV have called for an independent taskforce to be established to develop and promote "a vision and operational blueprint" to guide Victoria's response to rising sea levels and related storm surge.

"We know that climate change is going to hurt many Victorian communities if we do not act," VMaCC chair Dr Anthony Boxshall said.

Continued on page 2.

NWMPA TRADER PROFILE, PAGE 03

A Errol St Chiro: Healthy spine, healthy life



ARTS & CULTURE, PAGE 05

B Arts House hits the snooze button



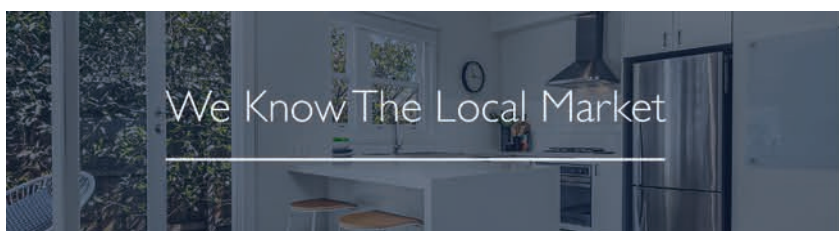
HOUSING, PAGE 06

C Social housing project build "tops out"



BUSINESS, PAGE 11

D North Melbourne's newest wine bar



We Know The Local Market

For a clear path to success

Kylie 0417 960 492

Trevor 0456 377 780



CONTACT
Suite 208, 198 Harbour Esplanade
Docklands 3008
northwestcitynews.com.au
Tel: 8689 7980

EDITOR
Sean Car

PUBLISHER
Hyperlocal News Pty Ltd
ABN: 57 623 558 725

ADVERTISING
Hyper-local print works for advertisers in our digital world because local people are interested in local news. To sell to the North West City community, contact Jack Hayes on 0401 031 236 or jack@hyperlocalnews.com.au

Reader contributions are welcome. Send letters, articles and images to: brendan@hyperlocalnews.com.au

The deadline for the September edition is September 8.

SOCIAL MEDIA
Follow us on Twitter @North_West_City_News

Like us on Facebook northwestcitynewsmelbourne

Follow us on Instagram @northwestcitynews

Opinions expressed by contributors are not necessarily shared by the publisher.

hyperlocalnews.com.au
admin@hyperlocalnews.com.au



Kensington among top 40 suburbs at “high risk” of floods, study shows

Continued from page 1.

“This rigorous report clearly and comprehensively documents the economic challenges that Victoria’s coastal communities will face from sea level rise and related storm surges.”

Dr Boxshall said spending on adaptation over the next two decades could help reduce future risk and “save significantly on the estimates of future costs”.

Speaking of ways to ensure future development was designed with flood resilience in mind, City of Melbourne Deputy Lord Mayor Nick Reece said the council was responding to the challenges of flooding and climate change.

“Our planning and building rules are designed to preserve the quality architecture and design of Melbourne streets and built form but also recognise the challenges of increased future flood events,” he said.

“This is not about building fortresses and walls – it’s about well-designed beautiful buildings and streets that are climate-resilient.”

According to the Macaulay Structure Plan, a framework endorsed by the council last year to guide the vision of North Melbourne and Kensington, recognised that “climate change

impacts will result in more intense rainfall events, increasing the magnitude of flooding, waterway levels and storm surges.”

“Future resilience planning for Macaulay will be undertaken collaboratively with the community and key partners from the precinct, seeking to identify opportunities for ongoing resilience,” the framework read.

Significant floods have occurred in North Melbourne and Kensington in past years, including a significant event of flash flooding in January 2011, which saw cars trapped in flood waters in Stubbs St and Macaulay Rd. However, drains and infrastructure improvements have reduced the risks of similar flooding occurrences.

Kensington Association chair Simon Harvey said the report “makes it crystal clear, we do need an operational blueprint to guide the responses to the threat of coastal inundation, but we also urgently need one for each of the other primary threats - fires, floods, and drought”.

“Although we don’t live directly on the coastline, the effect of coastal inundation will filter down to the whole community. It’s important to note that the assumptions used in the modelling for the report are thought to be conservative.” ●



▲ Alessia, 11, Kensington Junior Soccer Club

Why are you so passionate about playing soccer?

Because it’s a great sport and it makes me feel really happy when I’m out playing it with my friends. It is such a good feeling when me and my team play well together. I also love winning.

Which athlete do you look up to as a role model, and why?

Steph Catley [Matildas] is my sporting role model because we both play left back, and she is amazing at it. I aspire to one day play as well as her and maybe one day even play in the World Cup. She also leads her team and helps them play the best that they can.

What do you love most about the Kensington Junior Soccer Club?

The thing that I love most about Kensington Junior Soccer Club is that everyone is so nice and kind. Everyone is welcome and accepted and nobody ever feels left out. ●

haileybury.com.au



More than a terrific trumpeter.

HAILEYBURY

DISCOVER MORE

We encourage our students to succeed in all aspects of school life — be it in their academic side, melodious music side or striving for success in sport. Some kids like Evelyn excel in all three. When she’s not blowing our socks off playing the trumpet, you can find Evelyn commanding the team as our School’s soccer goalkeeper. Now that’s what we call kicking some serious goals.

TRADER PROFILE

North and West Melbourne Precinct Association

Healthy spine, healthy life

“

The thing Dr Lisa Smycz, head chiropractor and founder of Errol Street Chiropractic Centre, loves most about her job is getting people back to what they love doing.

”

WORDS BY Jack Hayes
BUSINESS



Whether it's running, yoga or playing with grandchildren, no matter how lofty your goals may seem, it's education, persistence, and the support of three decades of industry-leading experience that can get you there.

After growing up in neighbouring Moonee Ponds, it seemed only fate that Dr Smycz would call Errol St home, and she has done so for the past 17 years.

Dr Smycz treats all ages, from babies to the elderly, treating everything from lower back and neck pain to spine re-alignment through an advanced scientific system called Chiropractic BioPhysics (CBP).

“A big part of what I do is educate people on sleep, daily posture and to reconnect with their body,” Dr Smycz said.

“Through the BioPhysics technique, we assess what is happening with your spine and choose the best form of treatment for you. The CBP treatment is the structural rehabilitation that aims to bring the spine closer to ideal alignment.”

“The normal spine has three distinct curves at the neck, ribcage and lower back which act as shock absorbers, providing balance and maintaining nerve integrity.”

“Our goal at Errol Street Chiropractic is to use CBP analysis and techniques to pinpoint any changes in spinal alignment and make corrections to bring your spine closer to correct alignment.”

Dr Smycz is one of only two qualified CBP chiropractors in Melbourne and will often have patients travelling across the city and state for her services.

She has earned a reputation for dealing with acute cases, with even practising chiropractors choosing her as their own preferred practitioner.

Her education and methods focus on three



▲ Dr Lisa Smycz - Errol Street Chiropractic Centre.

Photo: Hanna Komissarova.

main pillars: alignment, function, and strength.

Alignment – your spine is supposed to be straight, if it deviates you are going to weaken the system.

Function – it all needs to move. If your spinal joints aren't moving, you are going to be restricted in some way or another.

Core strength – making sure you have the strength, and the spine is supported.

“With so many people working in offices or their homes, it is easy to creep into bad habits,” Dr Smycz said.

“A lot of people don't know, but when the head sits forward, it kicks in the sympathetic nervous system and puts the body into fight or flight mode, even if you aren't feeling stressed.”

“The brain will perceive that position as you are ready to run from a tiger. If you can then

understand how that drives the body, you are more conscious about how to help yourself on a physiological level.”

While there are many ways to improve spinal health, Dr Smycz gave *North West City News* three simple tips to help readers ...

- Phone – bring up your phone so that your line of sight is horizontal with the ground.
- Move – get up every 30 minutes.
- Hydrate – drink water. It sounds simple and unrelated to your spine, but if your muscles aren't hydrated, everything tightens up. ●

For more information:
errolstchiro.com.au



Shop the Precinct

Support our local businesses by gifting the ultimate gift card.

Visit our website to purchase and find out where and how to redeem your cards.



A new community centre is coming to North Melbourne

Continued from page 1.

At the time of publishing, councillors considered the proposal at their August 15 Future Melbourne Committee meeting, in which they were expected to vote in favour of approving two rounds of community consultation, with the first to run from August 16 to September 22, including workshops and pop-up sessions.

The second round of consultation is expected to be held later next year with draft designs to be shared with community and other stakeholders.

According to a council report, there was a “strong community need” for a new community centre in North Melbourne to replace existing community facilities in the precinct, “which are approaching the end of their lifespan”.

The new modern 3000sqm community hub will replace the existing nearby North Melbourne Community Centre (NMCC) on Buncle St, which is located next to the Buncle St Reserve.

The NMCC’s recreation facilities, including a basketball court and gym, will be redeveloped as part of the council’s longer-term planning “for recreation needs in the precinct”.

While the basketball court and gym would continue to operate during the construction of the new centre, plans for what the future recreational spaces would look like are being left open this stage and will be informed by community consultation.



However, the council confirmed there would be no loss of recreational facilities and options would be explored for open space and recreational facilities on the Melrose St site, as well as other council-owned sites in the neighbourhood.

Lord Mayor Sally Capp said the new community centre was a huge win for the community that was set to see “unprecedented growth” in

coming years with Macaulay’s current population of 3150 residents predicted to grow to 10,000 by 2051.

“We’re encouraging North Melbourne residents, workers, students and visitors to tell us what they want to see in this modern multi-use space, so we can ensure it can better meet the needs and aspirations of our community,” Cr Capp said.

“

The new modern 3000sqm community hub will replace the existing nearby North Melbourne Community Centre (NMCC) on Buncle St

”

The council’s health, wellbeing and belonging portfolio lead Cr Dr Olivia Ball said the new centre would make a “positive difference to the lives of those living and working in the area”.

“This new centre will help us meet the neighbourhood’s current and future needs – ensuring community members have easy access to a range of vital services and programs, closer to home.”

The Hotham Hub stopped operating as a children’s centre in August 2021, with families, staff, and equipment relocated to the Lady Huntingfield Early Learning and Family Services Centre in North Melbourne, which has the capacity to support more than 100 children per day.

Hotham Hub now operates as the North Melbourne Toy Library three days a week. ●

Housing redevelopment under pressure amid community concerns

WORDS BY *Brendan Rees*
HOUSING

The redevelopment of a former public housing estate in North Melbourne has come under criticism due to its reported delays, a lack of updates, and community consultative committee members “treated very poorly”.

The housing project, Academy North Melbourne, at Abbotsford St is part of the state government’s Public Housing Renewal Program, which has so far seen 112 public housing dwellings built in the 1950s demolished at the estate.

They will be replaced with 300 new apartments for private buyers, including 133 social housing units, under a state government partnership with developer MAB Corporation. The social housing units will be managed by Housing First when the development is complete.

But the project – which is wedged between the new North Melbourne Molesworth St primary school campus – has come under fire in recent months, with many expressing concerns about the development’s lack of progress after the social housing component was initially planned for completion by the middle of this year.

Sources familiar with the project also say very few apartments have reportedly been sold on the corner of Molesworth St and Abbotsford

St, with construction yet to start and a “re-design” of the development believed to be under way. It is understood construction won’t begin until 70 per cent of the units have been pre-sold. The government was sought for comment on these issues.

A spokesperson for MAB Corporation told *North West City News* the project had “experienced a slower than expected sales rate given challenging market conditions, resulting in delayed construction of the project”.

“In light of the market conditions, the project’s existing design and product mix is under review. Given the delays to construction and the design review currently under way, MAB is working closely with purchasers of apartments at Academy North Melbourne to provide alternative options to assist with their individual circumstances.”

Some members of the government-convened community consultative committee, which was established to meet every six weeks for updates on the progress of the project and to raise feedback, say they have been “treated very poorly” by the government with a lack of transparency and updates, as well as “minutes rarely reflecting any robust discussions that came up”.

Committee members, who spoke on the condition of anonymity, said they “came to the table in good faith with the hope of making a significant contribution to the project but those aspirations were thwarted because the government wasn’t listening”.

A former resident, who wished to remain anonymous, said they were “forcibly removed” from the estate and had struggled to get information about their right to return including a timeline. The resident now lives in a home that was much too small and they felt really isolated from their community.

A Homes Victoria spokesperson said there was “no delay to the delivery of the homes at the Abbotsford St site” with the project to also provide a community room and improved public open space.

“Construction works are proceeding in accordance with the approved program, which will see the social housing homes completed in early 2024,” the spokesperson said, adding it would be well-designed, modern, and sustainable homes that will improve the area.

“The market housing will be delivered in two stages, with the townhouse stage on track for completion in early 2024 and the market apartment stage anticipated to be completed in late 2026.”

Greens State MP for Melbourne Ellen Sandell, who has been working closely with concerned community members and former estate residents, said the loss of public housing at Abbotsford St was a “travesty”.

“We are in a housing crisis, with over 130,000 people waiting for a public housing unit, yet all Labor has done is give more profits to property developers while the public housing wait-list gets longer and longer,” she said.



▲ A render of the project looking from Haines St.

A concerned parent at the primary school said trucks had previously blocked pathways and access to the school, while also blowing up dust into the playground on windy days. They now wondered what mitigation plans were in place going forward.

“We’re concerned because it’s our understanding that they’re going to build something and we don’t know what’s happening,” they said.

The City of Melbourne said it had worked with builder ARC3 to ensure development at 10-36 Haines St was safe and disruption reduced, including clear access for pedestrians and school children on the footpath from 7am to 9am, and forklifts delivering materials using the footpath between 9am and 2.30pm. ●

This year, all Australians will be invited to make history by saying ‘yes’ in a compulsory referendum to alter Australia’s Constitution by enshrining an Indigenous Voice to Parliament.

The Constitution is the founding legal document of our nation, providing the basic rules for the government of Australia. The Constitution is our nation’s birth certificate.

Over many years we have spent a lot trying to improve the lives of Indigenous Australians, but we haven’t got better results.

If the referendum succeeds, the Voice to Parliament means Indigenous Australians will be consulted and give advice to Government

to design better solutions for issues that affect them.

This will lead to better outcomes for Indigenous Australians in health, employment, and education – because we know when Government listens to people, we get results.

For most of us, saying ‘yes’ won’t change much. But for Indigenous Australians the Voice will bring about tangible change. There is nothing to lose, but so much to be gained.

L. White

Senator Linda White
SENATOR FOR VICTORIA



Say yes!



Authorised by L. White, Australian Labor Party, 62 Lygon St Carlton VIC 3053

Voting in the referendum is compulsory. Not voting may result in a fine.

Arts House hits the snooze button with the Nap Bishop

Arts House has invited Tricia Hersey, founder of the Nap Ministry, to its performance space on August 19 and 26 to share the notion that “rest is resistance”.

WORDS BY *Kaylah-Joelle Baker*
ARTS & CULTURE

Ms Hersey is known globally as the Nap Bishop, for obvious reasons, for she has developed a fulfilling career on the liberating power of naps and how they can help one battle the daily grind.

As a venue that has built itself on presenting experimental and contemporary works, Arts House co-artistic director Nithya Nagarajan said the Arts House team was “keen for Tricia’s vision to be translated into an immersive installation experience that our audiences and neighbours can have a snooze in”.

“[Tricia Hersey and the Nap Ministry] are invested in deprogramming grind culture and are thinking critically about rest through the lens of justice movements,” she told *North West City News*.

“Advising us to experiment with rest as power, the Nap Ministry’s work has wide influences: Black liberation, womanism, somatics, and Afrofuturism. They also offer a counternarrative to how ‘rest’ is commodified through the wellness industry.”

For *An Uprising of Dreams*, on August 19, the Nap Ministry is collaborating with the independent Australian arts organisation Centre for Projection Art.

Described as the perfect local partner, the Centre for Projection Art will use projection as a tool for illuminating broader contexts and conversations, as the two-hour event follows the structure of a guided meditation and collective rest.

Audiences can expect “a gentle tantalising of the senses” with sound, projection, guided meditation, and music, while being encouraged to find a space to linger, close their eyes, and have a nap.

An installation-based work will also be accessible to the public for free on August 20, from 11am to 4pm, and August 21 to 24, from 10am to 5pm.

Ms Hersey will then wrap up her time at Arts House with *Rest is Resistance: A Keynote* on August 26, from 7.30pm to 8.30pm.

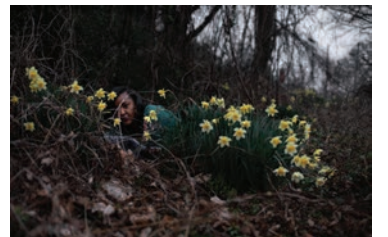
“We hope for audiences to take away the vitality of rest for their spirits - not so they can produce more output but because in the words of the Nap Ministry, ‘it is their divine and human right,’” Ms Nagarajan said.

“Leave your worries at the door and enter into a tranquil and family-friendly space to slow down and rest with purpose.”

Both works are also part of the *Now or Never* festival which takes place from August 17 to September 2.

ARTS HOUSE

For more information:
artshouse.com.au/events/an-uprising-of-dreams



WE GET THE BEST OUT OF OUR BOYS
One Campus
FROM 2023

Simonds Catholic College is a small school with big opportunities in the heart of the city. Our teachers are **experts in teaching the way boys learn best**. We are committed to small class sizes to ensure your son will receive the attention he requires to achieve his personal best.

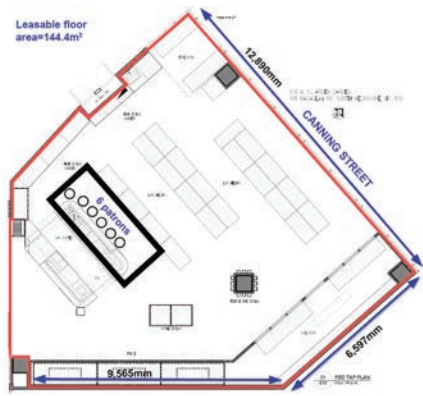
YEAR 7 2024 & 2025 APPLICATIONS OPEN
9321 9200

273 Victoria St, West Melbourne [2 blocks from Queen Vic Market]
www.sccmelb.catholic.edu.au info@sccmelb.catholic.edu.au

BOOK A TOUR TO SEE OUR PROGRAMS FOR BOYS IN ACTION

FOLLOW THE LIFE OF THE SCHOOL

Following our acquisition of a multi storey building on Chetwynd St and the completion of refurbishment of existing areas, we are thrilled to announce that **SIMONDS CATHOLIC COLLEGE** has become **ONE SCHOOL ON ONE CAMPUS**.
By 2023 all students across Year 7-12 will be based at our West Melbourne site.



▲ Floor plans from the report by the City of Melbourne.

Bottle-shop set to open as bar in North Melbourne

WORDS BY *Brendan Rees*
COUNCIL AFFAIRS

A North Melbourne bottle shop is set to open its doors as a bar under a proposal expected to be supported by the City of Melbourne.

The shop, Sessions on Arden, is situated within the Arden Gardens mixed-use complex at 129 Canning St, which comprises apartments and shops, including a Woolworths.

The owners are now seeking a general liquor licence – in addition to its packaged liquor licence – that would allow drinks to be consumed on-site or for takeaway purposes – in what they say will “allow customers to consume different types of liquor in a comfortable and safe setting”.

“Since opening, there have been large number of enquiries from our customers asking whether it’s possible to have a drink at the premises so they can learn more about the liquor they’re interested in. This is strongly in line with our goals,” the applicant Charman Cellar Pty Ltd said in a summary of its proposal to the council.

Under the proposal, the bar would be limited to six patrons with background music only, with service to operate no later than 9.30pm (including Good Friday and ANZAC Day). As a bottle shop the sale of liquor would be operate no until 11pm.

At the time of publishing, councillors were expected to back a recommendation from management to support the applicant’s bid at their Future Melbourne Committee meeting on August 15.

However, the application has drawn a mixed response from the community including 16 objections and 14 letters of support.

Opponents expressed concern about the shop operating within a residential area and impact to amenity including noise, inappropriate behaviour of patrons and intoxication, and “loss to visual aesthetics of the area”.

A council report said, “subject to conditions, the proposed use is acceptable as it aligns with the purpose and decision guidelines of the mixed-use zone and broader planning policy”.

“Having regard to the limited number of patrons and limited hours of on-site consumption, the use can be appropriately managed via planning permit conditions.” ●

North Melbourne social housing build reaches “topping out” milestone

“

A \$40 million housing complex build in North Melbourne is gathering pace with Premier Daniel Andrews visiting the site to speak about the importance of providing more social and affordable housing.

”

WORDS BY *Brendan Rees*
HOUSING

The development at Shiel St, which is part of the \$5.3 billion Big Housing Build, will feature 70 new social housing homes and be managed by Housing Choices Australia when it’s completed in mid-2024.

The Premier and the Minister for Housing Colin Brooks visited the site on August 8 after the nine-storey building passed its “topping out” milestone, a celebration that signifies the successful completion of the structural phase of a project.

Once finished it will accommodate new one-, two- and three-bedroom homes that are modern and energy efficient, allowing renters to save more on their power bills.

The site will include safe and publicly accessible open and green spaces, as well as being located with easy access to public transport, shops, schools, and medical facilities.

Premier Andrews said the topping out of the building, which is being delivered by Buxton Construction, marked an important part of the project, and brought hope to many in need of a place to call home.

Amid a backdrop of construction at the site, as well as another project under way a few blocks away that was also part of the Big Build, the Premier said, “we know that more housing choices, and more affordable housing has perhaps never been more important that it is right now”.

“There’s a lot of stress, there’s a lot of anxiety about not having options, not having choices, not having that power and we want to do something about that.”

“It’s very hard to build a successful life, a stable life, a life of dignity and purpose if you don’t have somewhere to live.”

“All over Victoria work is happening right now to build more housing for Victorians through our Big Housing Build – the largest single investment in social and affordable housing by any state or territory government.”



▲ Premier Daniel Andrews inspects the progress of a social housing build in Shiel St, North Melbourne.



Member for Northern Metropolitan Region Sheena Watt said she was delighted to visit the Shiel St development and the progress “being made on these beautiful new social and affordable homes”.

“We’re very much looking forward to welcoming their new tenants to the local community,” she said.

The state government is delivering more than 12,000 new homes and creating more than 40,000 jobs through the Big Housing Build – with the Shiel St development supporting more than 350 jobs since construction began in June last year.

However, there was a mixed reaction from the community over the development during the consultation phase in 2021, with some residents expressing concern over its bulk and scale, setbacks, brick façade, safety around vehicle access, soil contamination and lack of consultation, among other concerns.

The North and West Melbourne Association’s secretary Kevin Chamberlin applauded the development, saying “it’s great to see a substantial amount of family accommodation now being

incorporated into apartment developments in the City of Melbourne”.

“There’s been a long history, mainly driven by banks and financiers who essentially demanded that development of this nature be one-bedroom and maybe a small number of two-bedroom apartments,” he said.

“This is a second development to be approved for this site. The previous one was much higher, so this is a significant improvement as it is much lower.” ●

ADAM BANDT

FEDERAL MEMBER FOR MELBOURNE

142 Johnston Street, Fitzroy
(03) 9417 0772
adam.bandt.mp@aph.gov.au

adambandt.com

Authorised by J. McColl, 142 Johnston St, Fitzroy VIC 3065.

Red Cross building snapped up by build-to-rent giant

A former Australian Red Cross building in North Melbourne has been sold to real estate investment firm Sentinel, which plans to transform the site into apartments under a build-to-rent model.

WORDS BY *Brendan Rees*
PROPERTY

The purchase of 23-47 Villiers St will be Sentinel's second build-to-rent (BTR) apartment complex in Melbourne, following its 172-apartment project, The Briscoe, in West Melbourne, which is expected to open later this year.

Sentinel, the Australian arm of the US firm, is proposing to build 350 apartments across two buildings at the North Melbourne site as part of its Australian build-to-rent venture with Dutch pension fund manager PGGM.

Under the build-to-rent model, tenants can enjoy numerous benefits, including longer term leases, transparent rental pricing, and access to a range of amenities designed to enhance community living.

Sentinel's Australian managing director Keith

Lucas said it was a "meaningful opportunity to deliver a significant boost in housing choice for the area that will support the rapidly growing health and education precinct and more broadly, Melbourne's housing needs".

"We're looking forward to leveraging our experienced and established build-to-rent platform to transform this well-located inner-city site into a vibrant and sustainable community with high-quality rental apartments, a wide range of resident amenities, and a professionally managed rental experience," he said.

PGGM's senior director of private real estate Jikke de Wit said the development would "support the creation of quality and low carbon housing that is well-positioned to benefit other healthcare professionals, whilst generating healthy, long-term returns for our clients".

"We primarily invest on behalf of those who work in the health sector, so we are very pleased that our investment in this project," he said.

JLL Melbourne managed the sales campaign and transaction, with the site selling for an undisclosed sum.

"After a rigorous purchaser selection process on behalf of the vendor, Sentinel was deemed the most appropriate counterparty for the transaction as well as providing highly favourable commercial terms for the vendor," JLL's Josh Rutman said.

"We are delighted to see Sentinel grow its development pipeline in Australia as other major build-to-rent players continue to compete



aggressively to secure large-scale sites where operational scale can be achieved."

Last year developer Mirvac opened Liv Munro (a build-to-rent tower) next to the Queen Victoria Market, and in recent months Lendlease has proposed to build a 46-level tower accommodating 560 residential apartments including build-to-rent at the southern end of Queen Victoria Market.

Mr Rutman said as the "challenges mount for traditional local developers, the timing for BTR groups to pursue inner-city landholdings has never been more opportune".

"The solution to the current rental crisis won't come easily (or quickly) but as BTR moves from a niche product to the mainstream rental option it is in other countries, it will create a new path for the property industry to deliver more diverse housing options for our

rapidly growing population."

The purchase of the Villiers St site, which is located in Melbourne Biomedical Precinct, grows Sentinel's total pipeline in Australia to more than 1600 rental units.

An Australian Red Cross spokesperson did not reveal the reasons behind the sale of the building after settlement occurred in June but added the Australian Red Cross "is now leasing back the building and will continue to occupy the space until we locate an alternative fit-for-purpose office space".

Under Sentinel's plans, the new apartments will target carbon neutral certification and a 5-Star Green Star rating from the Green Building Council of Australia. Upon completion, it will be operated under Sentinel's Australian property management brand Kinleaf. ●

West Gate Tunnel construction more than "70 per cent" complete

The Victorian Government has announced the heavily interrupted construction of the West Gate Tunnel is now more than 70 per cent complete, after beginning in early 2018 and now projected to finish in late 2025, three years later than originally proposed.

WORDS BY *Edmund Coleman*
PLANNING

According to the state government 4.5 kilometres of "road deck" has been installed in both twin tunnels, and the removal of the two tunnel-drilling machines is under way as construction of the tunnel's entries and exits begins.

The project has been cursed by delays due to disputes over the disposal of contaminated soil, and an underground collapse in June. Serious controversy also surrounds the expense of the project, with the original cost of \$5.5 billion now nearly doubled.

The project aims to decongest travel through



Melbourne's western suburbs, removing "thousands" of trucks from local roads, with each tunnel providing for three lanes of traffic between the West Gate Freeway and the Maribyrnong River.

Minister for Transport and Infrastructure Jacinta Allan joined workers on the project to

travel the drivable length of the tunnel for the very first time in August, marking a significant milestone for the project.

Minister Allan said the tunnel "will slash travel times, take more than 9000 trucks off local roads, and get families home safer and sooner."

"This is the biggest tunnel project Australia has ever seen – we thank the thousands of Victorians who have worked around the clock to get us closer to the finish line on a project that will transform our transport network," Minister Allan said.

"We thank the community for their patience and understanding while we get on with this important work to significantly improve Victoria's transport network."

Speaking to *North West City News*, director of RMIT University's Centre for Urban Research Professor Jago Dodson agreed reduced trucks will be beneficial for local streets, however he again questioned the cost of the project.

Professor Dodson also highlighted potential competition between the road and rail networks in a city striving for greener approaches to transport and travel. While the project includes creating 14 kilometres of new and upgraded walking and cycling paths, Professor Dodson said the issue of car-centric planning was still of concern.

"We have a long-term intention in Melbourne to reduce the level of travel by automobile, and to encourage more public transport use as well as walking and cycling," Professor Dodson told *North West City News*.

"By competing with the adjacent railway network there's a risk that the West Gate tunnel perpetuates car dependence in the city." ●

C9 CHOCOLATE & GELATO

C9 Chocolate & Gelato

C9 Chocolate & Gelato offers premium quality house-made gelato, desserts, and treats for every chocolate lover.

If you're craving something sweet, give C9 dessert bar a try and experience our irresistible desserts for yourself!

📍 397 Swanston St, Melbourne

www.c9gelato.com.au

📷 @c9chocolateandgelato

SHOP LOCAL

Supporting business



Construction partner:
CP Design & Construction

CYP-BS00371



It's one of Melbourne's most famous destinations attracting some 10 million visitors each year.

It's home to more than 650 small traders and family-owned and operated businesses.

It is the longest-surviving marketplace of its size and diversity in Australia.

It's a critical part of Melbourne's early development, and continues to play a central role in the city's cultural, business and social life.

Through the renewal of the Queen Victoria Market and surrounding precinct, the City of Melbourne is restoring the market's heritage while delivering modern facilities to make the market work better for traders, customers and visitors, and revitalising this growing part of the city.

Almost 40 per cent of the renewal program is now complete, with works continuing across the precinct.

It's not just a project about a market. It is a once in a lifetime, city-shaping urban renewal project that will deliver for the fastest-growing part of our city.

Queen Victoria Market will always remain a fresh food open air market and will retain its unique atmosphere, heritage and affordability.

In this special feature we take a look at the projects we've delivered and the ones to come that will ensure the future of our city's 145-year-old magnificent market for generations to come.

To keep up-to-date with works, visit melbourne.vic.gov.au/qvmrenewal

MARKET TRANSFORMATION PART OF HISTORIC \$1.7 BILLION PARTNERSHIP

Melbourne's beloved Queen Victoria Market is set to undergo a \$1.7 billion transformation.

The City of Melbourne will partner with Lendlease to transform the market precinct in what is the biggest mixed-use development in our history – attracting more customers and boosting business for traders.

Gurrova Place will be developed by Lendlease, following our landmark divestment of the Southern Precinct – generating more than \$1 billion in economic activity and creating more than 4,000 new jobs.

The once-in-a-generation project will enhance the traditional market experience Melburnians and visitors know and love – with iconic laneways and arcades to explore, a uniquely Melbourne retail offering, and new spaces to bring people together.

Gurrova Place will include build-to-rent apartments and 15 per cent affordable housing, student accommodation and a landmark office space across three buildings – all connected to the market by the soon-to-be revamped Franklin Street stores.

A new underground car park will provide 220 spaces for market customers, and 300 spaces on weekends. This is in addition to the 500 spaces already open in the Munro development – ensuring there will be no loss of parking.

Lord Mayor Sally Capp said the divestment of the Southern Precinct will transform the city's north with a vibrant new precinct bursting with uniquely Melbourne experiences “creating an enduring legacy for the Queen Victoria Market for generations to come”.

“Gurrova Place will enrich the traditional market offerings Melburnians and visitors know and love – attracting thousands of new residents, workers and visitors and boosting business for traders,” the Lord Mayor said.

“This globally-iconic precinct will be a place to celebrate – with spaces for events, world-class retail and new laneways and arcades to complement the beloved market experience.”

In consultation with Traditional Owners, Gurrova Place will pay tribute to the site's history. Gurrova means place of exchange or interchange, reflecting the purpose of the market.

The development has been designed by world-leading architects, and will set a new benchmark for sustainability – creating a precinct rich in biodiversity, while targeting Carbon Neutral Precinct Certification and 5 and 6 Star Green Star ratings.

Lendlease Managing Director Development Tom Mackellar said construction of Gurrova Place “begins the next chapter in the evolution of Queen Victoria Market”.

“Lendlease looks forward to working alongside the City of Melbourne, Scape and all project partners, and the community to deliver a reimagined precinct that preserves the heart and soul of this Melbourne landmark while ensuring it continues to thrive,” he said.

Gurrova Place will complement a range of projects we have already delivered in the precinct.

The divestment of the Southern Precinct follows an agreement with the State Government in 2014 to transfer the site to us to be sold, with all funds reinvested in the market's renewal.

Construction is expected to start next year with projects to be delivered in stages.

KEEP IN TOUCH

To stay connected with all the latest news from the City of Melbourne, follow us on social media and subscribe to *Melbourne News* at news.melbourne.vic.gov.au

Connect with us

[/cityofmelbourne](https://www.facebook.com/cityofmelbourne)
[@cityofmelbourne](https://www.instagram.com/cityofmelbourne)
[@cityofmelbourne](https://www.twitter.com/cityofmelbourne)



ADVERTISEMENT
Your City of Melbourne community update



Artist impression, subject to approvals and consultation

**HAVE YOUR SAY ON OUR PLANS
TO TRANSFORM FRANKLIN STREET**

We're proposing to create a new link between the heart of the CBD and the Queen Victoria Market along Franklin Street, paving the way for the landmark Gurrova Place development.

Along with a new Market Square and plans for a multi-purpose civic building, the transformation of Franklin Street will continue our investment in the Queen Victoria Market precinct.

Early works on the first stage of this project are set to start later this year on William Street, which will begin the works to realign Franklin Street to unlock Gurrova Place.

We want to hear your feedback about the project which will provide more open space for the growing community and improve safety and accessibility for all road users.

The Franklin Street transformation project proposes:

- 1250m² of open space for residents, workers and visitors to enjoy.

- Turning four lanes of traffic into two, maintaining access for motorists in both directions.
- Better connections for people moving between the CBD and Queen Victoria Market.
- More trees and plants, providing 40 per cent more coverage and helping create a cooler environment.
- Improved safety for the community with new pedestrian crossings, lighting and reduced traffic flow.
- Stormwater flooding management with draining upgrades and water sensitive urban design solutions.

The transformation of Franklin Street is part of the \$100 million Transport and Amenity Program – a partnership between the City of Melbourne and the State Government.

Community members can have their say on the Franklin Street draft concept design until 23 August at participate.melbourne.vic.gov.au



An artist's impression of a revitalised Franklin Street

NEW FOOD HALL

Construction of the market's exciting new dining experience is nearing completion.

Set to open later this year, the new Food Hall will offer customers a contemporary place to eat, meet and enjoy the market atmosphere.



QUEEN STREET PLAZA

Through the renewal program we created a new pedestrian-friendly plaza in Queen Street, between the toilet block and F to M sheds, with more trees, more shade and more seating for customers to stop and enjoy the unique market atmosphere.

Completed in 2019, together with the visitor hub and additional retail locations in String Bean Alley, the plaza welcomes visitors entering from the south and draw customers into the heart of the market.

MORE SUSTAINABLE OPERATIONS

Traders and customers told us that making Queen Victoria Market more sustainable is important.

Solar power, stormwater harvesting and an on-site organic waste recycling facility are just a few of the projects proposed for the renewed market precinct.

We've already powered up more than 1,550 solar panels to cut carbon emissions and reduce the market's electricity bill.

At the project's completion, the market will be powered by 3,765m² of solar panels.



HERITAGE SHED RESTORATION

We're investing more than \$30 million to restore the market's culturally and historically significant open air sheds, securing them as the unique backdrop of the market experience.

Ten of the 12 sheds have been restored since 2020. This year, the heritage shed restoration program moves to the final stage in Sheds H and I, with works to repair and strengthen structural elements, painting, new insulated roofing to improve the temperature under the sheds, and upgrade of common area services.

MUNRO DEVELOPMENT



Right on the doorstep of Queen Victoria Market, at the corner of Queen and Therry streets, will be the city's largest new library and community hub.

Works to fit out the new space have begun and are due to be completed later this year.

The development will include a library and community hub, family services, 2500 m² of new open space and laneways, new hospitality and retail stores.

Affordable housing apartments and 500 underground car parks for market customers opened in December 2021 and boutique hotel and apartments for long-term rental were completed in November 2022.

SAFETY PART OF STREETScape WORKS

As the Munro development nears completion, the final stage of works involved upgrading the streetscape, including the roadway, in front of the development along Therry Street and Queen Street.

As a key gateway into the market, the upgrade of the streetscape will greatly improve safety, create a more welcoming and pedestrian-friendly street with wider footpaths, more greenery, lighting and shade for customers to stop and enjoy the market atmosphere.

IMPROVING MARKET FACILITIES

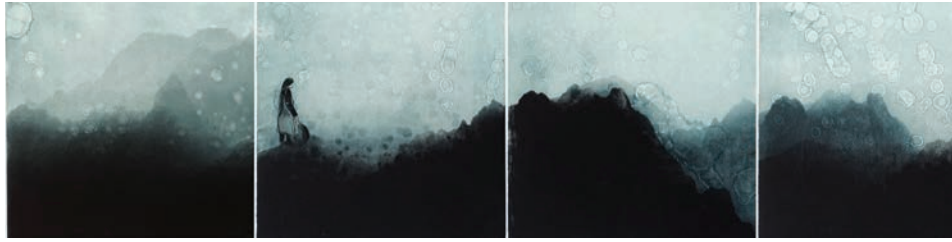
Planning and heritage permits have been approved for two new purpose-built facilities in Queen Victoria Market.

Construction of the Trader Shed and Northern Shed will deliver essential services for traders and upgraded facilities for all market workers, shoppers and visitors.

STRING BEAN ALLEY

Twenty-six independent traders in bespoke shipping containers now call String Bean Alley home and provide a uniquely Melbourne shopping experience in the heart of the market.

String Bean Alley and the new pedestrian plaza on Queen Street are part of a series of key market improvements identified in the Queen Victoria Market Precinct Renewal Master Plan. These projects directly address feedback from customers and traders and as well as recommendations from the People's Panel.



DRIFTWOOD at Gallerysmith



Lisa Seward stopped, standing over a piece of driftwood on Shoreham beach, fascinated. The artist began to study the small tracks grooved by ancient currents, musing on the driftwood's journey and how it came to rest.



WORDS BY *Edmund Coleman*
ARTS & CULTURE

The shore-borne vestige now lies in Seward's studio, and is the inspiration for the name of her upcoming exhibition at North Melbourne's Gallerysmith, *DRIFTWOOD* – a body of work created using metal backed solar plates through which the artist considers the haunting nuance of displacement.

Seward has been exploring the idea of displacement for several years. During WWII

Seward's mother was forced to walk from Belarus to Germany, where she was interned for five years in a displacement camp. The artist drew parallels between her mother's journey and the driftwood she found on Shoreham beach.

"I thought about [the wood's] vulnerability, drifting and travelling ocean currents, no longer connected to its roots. [My mother and the wood] drifted, changed shape and form and found a new home," Seward said.

Seward's works are also heavily influenced by poetry. Her multi-panel five-panel etching, *She Leaves the Hills*, was inspired by Eileen Chong's *Response to Mountain Songs*. The measured tragedy in Chong's verse ("Streams swell: water will/ rise and wash away/ this ink. Begin again/ forget all past words ...") echoes across the delicate chiaroscuro of Seward's mountaintops.

For the exhibition Seward also compiled an artist book, made up of scrolls. The first scroll is an etching of the artist's mother, with later scrolls depicting native trees growing in Bonegilla – the camp where Seward's mother lived in on arrival to Australia.

The last scroll, fittingly, depicts a piece of found driftwood.

DRIFTWOOD is on display at Gallerysmith from August 25 to September 30. ●

For more information:
gallerysmith.com.au

Safety, inclusion address at public housing community meeting

WORDS BY *Brendan Rees*
COMMUNITY

The North Melbourne public housing community has gathered in solidarity with the City of Melbourne to discuss critical issues of safety, inclusion, discrimination, and other concerns.

The meeting, held on July 17, provided a platform for more than 50 residents to have their voices heard, with many sharing personal stories.

They spoke about family violence, crime, and discrimination in employment, as well as issues about not feeling safe, poor lighting in streets, few volunteer support services, and the need to "feel equal and wanted".

The meeting was organised by the Motivation Assistance Rehabilitation and Growth (MARG) Foundation, a charity dedicated particularly to advocating the rights of vulnerable people and women impacted by family violence. Its CEO Deepa Gupta is a North Melbourne public housing resident.

Ms Gupta said the residents' main objective was to bring attention to the issues they face within their community and to work collaboratively with the council and stakeholders to find lasting solutions that built a more inclusive and safer community.

She said she hoped the outcomes of the meeting would help inform the City of Melbourne's Women's Empowerment and Safety Plan 2024, and the Disability Access and Inclusion Plan 2024.

She said the diverse group of participants included single mums, teachers, tradies, volunteers, accountants, researchers, retirees, and people with disabilities among others.

"Participants talked about their experiences on belonging, safety, inclusion, inequality and discrimination ... spelling out their needs and aspirations," she said.



Ms Gupta expressed her gratitude to the council, which she said shared her commitment to residents, workers, students, and visitors that "they all felt included".

Among those to share their voice were women of South Asian origins who were highly educated and hard working with top managerial experience but had "little recognition when they applied for jobs or positions" in Australia.

Women from the culturally and linguistically diverse (CALD) community who are facing family violence said that while they felt safer in the community compared to living in other suburbs, their "biggest reason for their insecurity" was not being able to afford their own home and to "have freedom from violence".

Ms Gupta said women impacted by family violence also wanted to be a part of a support group to give "them better confidence to intermingle without feeling unsafe or insecure".

"They asked the City of Melbourne to bring equality, reduce discrimination e.g by bringing a policy or special drive to give priority to CALD women and the first priority to those impacted by violence," she said.

Other issues raised were concerns of increased crime, including break-ins to homes and vehicles, drug activity in the area, and residents having bank cards "snatched" by thieves while they were trying to buy basic food staples such as milk and bread. ●

THE GYM MELBOURNE

WE MAKE FITNESS FUN AND FOR EVERYONE

KICK - START YOUR FITNESS GOALS AND GET THE RESULTS YOU DESERVE!

SCAN THE QR CODE AND CHOOSE YOUR EXCLUSIVE OFFER TODAY

TERMS AND CONDITIONS APPLY. SEE WEBSITE FOR DETAILS

SCAN ME

New audio warning for illegal footpath riders in e-scooter crackdown

New "in-app communication" trial sees scooters telling off their non-compliant riders.

WORDS BY *David Schout*
TRANSPORT

A fleet of camera-equipped e-scooters have been rolled out in Melbourne, with new technology giving riders an audio warning for tandem riding and illegal travel on footpaths.

The 25 scooters from operator Lime feature "advanced camera capabilities" and will tell non-compliant riders to cease footpath travel, which is illegal in Victoria.

The "in-app communication" trial, now

under way on Swanston and Elizabeth streets and in Jolimont, will also direct riders to park in designated zones to avoid footpath clutter in busy areas.

Early reports suggest the trial had reduced complaints by 55 per cent.

Unlike most other states and territories where electric scooter users can ride on footpaths, travel in Victoria is restricted to streets and bike/shared paths.

The City of Melbourne wants to crack down on those doing the wrong thing, to prevent incidents with pedestrians.

"[We] recognise that there has been frustration felt by members of the community about people breaking the rules and causing nuisance around the city. We have listened and we have acted," Acting Lord Mayor Nicholas Reece said.

Continued: northwestcitynews.com.au ●

<p>Alibrijes Create a brightly coloured Mexican folk art animal. All ages welcome. Bring the family! Sat 23 Sep 2pm-4pm</p>	<p>Young Artists Class Develop technique, refine skills and explore your creativity in a relaxed and supportive environment. Ages 11-15 Mondays 4pm-6pm</p>	<p>Linocut Printmaking Create your own unique artwork under the guidance of an award-winning printmaker. Age 11+ Sat 9 Sep 1pm-4pm</p>
--	--	---

Kensington Neighbourhood House EST. 1975
www.kensingtonneighbourhoodhouse.com ph. 9376 6366

NORTH & WEST MELBOURNE PRECINCT ASSOCIATION



Local fashion brand launches Circular Sourcing

As part of its goal to create systems change for a circular economy in fashion, Melbourne circular fashion brand, A.BCH, has launched Circular Sourcing – a marketplace for surplus textiles with the goal of keeping Australian surplus fabrics in use and out of landfill.

WORDS BY *Courtney Holm*
FOUNDER - A.BCH / CIRCULAR SOURCING

A survey conducted by A.BCH in 2022 found 10 million kilograms (conservatively) of dormant textile stock scattered across the nation.

These materials, despite their high quality, are referred to as “deadstock” and remain unused and on a path towards downcycling or outright waste.

Among the entities holding excess fabrics – which include mills, manufacturers, and designer brands – there is a collective desire for these resources to be repurposed, yet practical constraints around infrastructure, time, and resources hinder their integration into primary business operations.

Additionally, micro, small and medium sized businesses, along with individuals and home sewers who seek access to such materials, encounter difficulties in sourcing them reliably and regularly.

Circular Sourcing has been created BY the industry, FOR the industry and was built on a

collaboration between local businesses A.BCH, Full Circle Fibres, MTK and The Social Studio.

The hope is the platform will serve as designer brands’ first port of call for their material sourcing. The goal is to help local fashion, textile and design businesses find what they need in the right quantities and the right price – all from one digital platform.

As materials become increasingly difficult to source from traceable supply chains, importation costs grow and certified fabrics remain largely inaccessible, deadstock will become an important aspect in a sustainable sourcing strategy.

Research also shows that the greatest area of impact is in the use phase and that keeping materials in their highest use case for longer, rather than just swapping out fibres for more sustainable ones, is the best way to reduce environmental impact.

Circular Sourcing is open not only to buyers but to sellers too. Businesses with high-quality surplus fabrics over five metres can become part of the circular economy while freeing up additional revenue by signing up at circularsourcing.world/sell-with-us/

For locals interested in learning more about circular fashion and sourcing, get in touch with the North & West Melbourne Precinct Association via info@northwestmelbourne.com.au for future information sessions and events.

For all your future deadstock fabric sourcing, visit us online (see below) and happy sourcing!

For more information:
circularsourcing.world

BUSINESS



Is this North Melbourne’s newest, and only, wine bar?

After teasing locals with the promise of wine, beers, aperitivos and tasty morsels for months, Lumen People is now open for night service.

WORDS BY *Jack Hayes*

As a suburb so well serviced with great cafes, roasteries, pubs and restaurants, it’s a surprising realisation that North Melbourne is seemingly bereft of a casual setting to enjoy a glass or two.

On opening their first solo café earlier this year, Emma Sheahan and Marichi Clarke, the couple behind Lumen, always intended to fill that void.

It was always going to be a wine bar that acts as an extension of their ubiquitous passion for conscious and considerate farming, a deep understanding of the industry and a love for approachable hospitality.

“We source wines similarly to how we source our coffee,” Sheahan said. “From people who live good lives, look after soils and farm responsibly.”

“Ours is a mix of traditional and lo-fi wines. Many are bio-dynamically farmed, with minimal impacts on the environment.”

“We want to put things on our menu that speak to us, what we would want to do ourselves, and have that great story behind them. Stories are important and develop that sense of place.”

Lumen’s modest wine list largely sits in an approachable range between \$15 and \$20 for a glass, pouring drops like Avani Wines’ Amrit 2022, a pinot gris from the Mornington Peninsula, or their Good Intentions pinot noir from Mount Gambier.

Coming out of the kitchen you’ll find a selection of snacks designed to complement and elevate what’s in your glass.

Snacks like Yurrita anchovies, LP saucisson and Charles Arnaud Comte are all accompanied by bread from Queensberry St bakers, Bread Club.

“Our favourite venues are the simple, opt-in approach, with a great wine list, delicious snacks and a low fi environment with high skilled chefs banging out some awesome dishes,” Clarke said.

“We’ve had a great response from regulars who usually come in during the day, who’ve watched us talk about evening service and they have responded to it well.”

“There are some fantastic restaurants in the area. We could compete with them, but we don’t want to. They are doing such a great job. We want a place that we would love to see in North Melbourne and perhaps fill the gap with something that has been missing.”

Lumen’s night trade runs from Wednesday to Sunday, 4pm to 10pm, with the hope of extending those hours as Melbourne begins to thaw out from winter. ●

For more information:
[Instagram @lumenpeople](https://www.instagram.com/lumenpeople)

SAVE THE NICHOLAS BUILDING

Melbourne’s iconic Nicholas Building is at risk of being turned into luxury apartments, a hotel, or a soulless commercial space, pushing out the hundreds of creatives who work there.

Join the campaign to save the Nicholas Building: Sign the open letter at [SaveTheNicholasBuilding.com](https://www.savethenicholasbuilding.com) or scan this QR code.



ELLEN SANDELL
GREENS STATE MP FOR MELBOURNE

(03) 9328 4637
office@ellensandell.com
146 Peel Street
North Melbourne VIC 3051



North West City Local

West Melbourne living meets natural soap making



West Melbourne resident and business owner Emma Cook has made the absolute most out of her home office since moving to the area five years ago.



WORDS BY *Sean Car*

Not only has she and her young family settled into life as residents of the West Melbourne community, it was only up until just recently that she was also selling natural, hand-made soaps directly from her home office.

A former SBS Indigenous Affairs journalist and speechwriter for the Department of Foreign Affairs and Trade, Ms Cook's career took a very different direction nearly 10 years ago when she and her husband, Anthony,



founded the Australian Natural Soap Company.

While the world of soap making might seem a stark contrast to journalism and politics, she told *North West City News* that the opportunity to travel around the country in her previous roles ignited a strong appreciation in Australia's natural assets and its many producers.

Together with she and her husband's long-held shared desire to want to start their own business, what began as "experimenting in the kitchen" has now blossomed into a success story that "champions" the best of Australia's native essential oils and natural ingredients.

"I was writing speeches for the Trade Minister at the time [of starting the business], and he was talking a lot about niche manufacturing and how Australia just has some of the most amazing natural ingredients that we should really be championing to the world, and somehow I took that on board and started



applying it to soap," she said.

"We get most of our ingredients from local suppliers, and particularly because we use pure essential oils, we've really learned so much about Australia's native essential oils and how they have these amazing aromatherapy benefits."

With her husband, a doctor, experiencing dry, irritated skin from using antibacterial soaps in hospital settings, Ms Cook said he, as well as family and friends, were among the first people to benefit from the "soothing" effects of their natural soaps.

And it was that early feedback that she said made them both think, "maybe there's something here..."

Since quickly outgrowing the kitchen and starting off with their first shop at South Melbourne Market, these beautiful, all-natural soaps and the sustainable philosophy

underpinning their brand has seen Australian Natural Soap Company take off.

Made entirely from natural plant-based ingredients using a slow-set, cold-pressed method and devoid of nasty chemicals, cruelty and palm oils, Emma's soaps can now be found in hundreds of stores across Australia and overseas.

As the business has evolved, so too have its products. Once realising that soap could "take the place of any cleaner or a cleanser" one uses at home, the business has since developed a range of new products, including soaps for dishes, laundry, hair and even dogs!

And until only recently, the business's office and point-of-sale came in the form of their West Melbourne terrace home, but it's since moved to their much more fit-for-purpose manufacturing facility in Dandenong.

But while it's since scaled up its operation from producing a few bars each day to thousands, with online sales "really taking over", Emma said nothing could ever take the place of talking to customers face-to-face from West Melbourne – a community she and her family are proud to call home.

"We would get people turning up at the doorstep wanting to buy soap, so we had to make it into a little bit of a shop front," she said. "You'd get the locals, but also people from overseas who had read about us or had been told by a friend."

"It's not only made in Australia, it's actually made from Australian ingredients, so a lot of people love being able to take a little bit of Australia back home."

"It's been quite a journey given the way that we made them in the kitchen to have to then scale that and make thousands every day. But, even through that, we've been able to keep the process exactly the same." ●

For more information:
theaustraliannaturalsoapcompany.com.au

ENVIRONMENT

Regenerate nature – a hopeful path forward

In the face of environmental challenges, our community is embracing the call to regenerate nature, breathing new life into our local ecosystems.

The circular economy model of thinking is a way to move forward to address our consumptive and destructive ways on nature.

According to the Ellen McArthur Foundation, "The circular economy is a system where materials never become waste and nature is regenerated. In a circular economy, products and materials are kept in circulation through processes like maintenance, reuse, refurbishment, remanufacture, recycling, and composting. The circular economy tackles climate change and other global challenges, like biodiversity loss, waste, and pollution, by decoupling economic activity from the consumption of finite resources".

Regenerating nature is one of the three principles that drive the circular economy.

Communities have taken a grassroots lead on restoring local ecosystems with local restoration and sustainable projects.

Volunteers have been working tirelessly to remove invasive species, plant trees and native flora, and create safe havens for wildlife. These efforts enhance the aesthetic appeal of our surroundings and create important habitats for birds, insects, and other creatures that play a vital role in our ecosystem.

To help regenerate nature you can join the many local projects such as **Newell's Paddock** – an urban nature reserve by the Maribyrnong River, a parkland and reclaimed wetland area that attracts a lot of bird life and native fauna.

Friends of Newell's Paddock started in 2014 and holds planting and weeding days, clean



▲ Before Food Forest ...



▲ Eastwood St triangle before ...



▲ After Food Forest ...



▲ ... and after.

up days and generally advocates for the park's improvement.

The Kensington Urban Food Forest, established in 2017, transformed a grassy patch of land at the Kensington Estate into a Food Forest with more than 25 tree species and more than 90 understory plants – increasing biodiversity, vegetation and habitat. A volunteer Forest Care Team looks after it.

The Kensington Stationeers have converted two triangles of derelict land near Macaulay Rd crossing into a lush green space with lots of plants and have regular working bees.

Eastwood Street Garden converted a neglected triangle of land owned by Young Husband to a forest garden with 10 food-producing trees, flowers, herbs, and a small grassy patch for local residents to enjoy green space.

The Friends of Moonee Ponds Creek Inc. (FoMPC) is a community group working to protect and enhance the Moonee Ponds Creek and its environs.

There are a number of local community gardens you can become a member of and grow food in a way that regenerates the soil rather than purchasing food supporting an industrialised agriculture system.

Perhaps the most heartening aspect of the regeneration movement is its ability to unite the community. People from all walks of life are coming together with a shared goal: to restore the beauty and balance of our natural world.

The journey is ongoing, but the strides we are making fill us with hope for a greener, more sustainable tomorrow. ●



Jacqui van Heerden
 CO-CONVENER OF TRANSITION TOWN KENSINGTON
[JACQUIVANHEERDEN@GMAIL.COM](mailto:jacquivanheerden@gmail.com)

KENSINGTON ASSOCIATION

Transition or transformation?

In the July edition of North West City News Brendan Rees reported on the sale of the iconic church on the corner of Queensbury and Curzon streets in North Melbourne. Apparently a Uniting Church leader said that “such a substantial landholding ... no longer met their missional goals”.

This got me thinking about churches and church properties around the area. Personally, my church attendance and membership lapsed many years ago, but I nevertheless respect the right of anybody to continue to practice their faith.

However, I ask what will become of some of the beautiful church properties and invaluable community support provided by church organisations, if, as the most recent census confirms, there is steady wilting of all branches of mainstream commitment to organised religion, aka “the church”?

Today we expect our governments – federal,

state and local – to provide a significant level of community support and infrastructure, but that has not always been the case.

While I am no historian, I know that in the early days of European settlement, “the church” was probably the most significant provider of the basics for those families who struggled to provide food, clothing, and housing.

Social support from “the church” continues to the present day, and there would be a significant short-fall in the provision of some social basics if that was not the case.

Think about the extensive work done by the following: The Brotherhood of St Laurence, St Vinnies, Uniting, Anglicare, Jesuit Social Services ... just to name a few. Uniting, for example, has 13 different “services” listed, including caring, alcohol and drug, disability, employment, education, housing, etc. Think also, of the significant contribution of the Catholic Church to education in the north-west of Melbourne.

One might ask, how this can happen, in the context of dwindling congregations? An obvious answer is that most, if not all, of these services are heavily subsidised by state and federal governments. Provision of services is certainly not dependent on the tithing of the “faithful”.

Given this, and assuming that the wilting of religious commitment continues on the same trajectory, the “names” (Brotherhood, Vinnies, etc) will almost certainly persist as pseudo arms of the Department of Social Services (federal

and Department of Health and Human Services (state). I am not privy to the extent to which any social service, under a church banner, is funded by government; and how much things like church investments, school fees from parents, fundraising, and congregational collection plates, are still important to their bottom lines.

From a community perspective, the fate of church-owned real estate, in particular the “places of worship” become both paradoxical and potential heritage footfalls. I frequently walk past an imposing ecclesiastical building and muse about its heritage value as opposed to its value as a place of worship.

As an organisation, how can a church justify the continued maintenance of an imposing edifice, if it only provides for the worshipping needs of a dozen or so of “the faithful”? If the previously cited Uniting Church in North Melbourne – St Mark the Evangelist – is anything to go by, their leadership has seen “the writing on the wall”. Indeed, one would have to be blind not to see it.

This scenario leads to a fascinating prospect – the protection (Oh God, I hope so!) and repurposing of church buildings and other church property. This has already begun locally with two cases that I know of – Christchurch in McCracken St, Kensington and St George’s in Travencore, which both feature regular concerts ... churches often have great acoustics.

My guess is that the Catholic diocese might



be more resistant to this trend ... perhaps because they have deeper pockets.

Can you imagine the forementioned St Mark’s, St Brendan’s in Flemington, and Holy Rosary in Gower St, Kensington, all becoming centres for the performing arts?

A refreshing twist (or interpretation) on the concept of “worship”. How far can one stretch this concept? ●



Simon Harvey
CHAIRPERSON

INFO@
KENSINGTONASSOCIATION.
ORG.AU

KENSINGTON NEIGHBOURHOOD HOUSE

Move it or lose it!

Even the most dedicated couch potatoes among us can no longer ignore the evidence. To stay well, live longer and enjoy our lives, we all need to move more.

Multiple research studies have shown that regular exercise:

- Boosts immunity;
- Prolongs life;
- Keeps brains young; and
- Boosts mood.

And, the best thing? You don’t need to be running marathons or breaking weight lifting records to reap the benefits. Research shows that the best exercise is anything you do regularly

and is appropriate for your particular body and abilities. Basically, any exercise you commit to on a regular basis is going to be beneficial.

Here at Kensington Neighbourhood House, we recognise the importance of exercise for its physical and emotional benefits. We also know that not everyone can afford a fancy gym membership or feels comfortable in active-wear. That’s why we offer three classes a week that are low-cost and tailored to different abilities.

On Mondays we offer Gentle Movement – a mindful movement class combining yoga, relaxation and exercise for peace of mind and body.

On Wednesday it’s time for Stretch and Strength – a low impact, floor-based class for women.

Friday morning brings Gentle Exercise – a class for improving stamina, strength and flexibility.

Each of these sessions is taught by an experienced instructor and suitable for people over 55 years of age. Participants often go out for coffee and a chat afterwards.

Regular attendee, Karen said, “I love my Monday class. I always come out feeling really good. Even when I can’t be bothered doing anything, I make myself go to class and I’m always grateful when I do.”

Karen is also a big fan of “the coffee and counselling afterwards!”

If you want a little more movement in your week, these options run at Kensington Neighbourhood House every week from 10am to 11am. Cost is \$20 per month per class:

- Gentle Movement – Mondays
- Stretch & Strength – Wednesdays
- Gentle Exercise – Fridays

Call 9376 6366 or email info@kenhouse.org.au to book. ●



Rebecca Smith

MANAGER KENSINGTON
NEIGHBOURHOOD HOUSE
INFO@KENHOUSE.ORG.AU

PARKVILLE GARDENS RESIDENTS' ASSOCIATION

What’s on the horizon ...

It’s time for Parkville Gardens residents to update diaries and calendars – there’s plenty happening in our neighbourhood in the next few months.

A big shout out to the City of Melbourne for the grants that make our community events possible, as well as cover administrative costs, especially our public liability insurance. Thank you, Lord Mayor, councillors and council officers!

Here’s what’s coming up ...

The first event (independent of the grants) will be the Annual General Meeting of the Parkville Gardens Residents’ Association

(PGRA). This is scheduled for the evening of Thursday, September 21.

Arrangements have yet to be made, but we hope to follow last year’s pattern and follow the meeting with a moderately priced meal at the Reggio Calabria Club.

Members are especially encouraged to attend, but all residents are welcome to take part. Come along and have your say.

That’s the warm-up event for our big night out – the trivia competition and dinner at the Reggio Calabria Club.

Last year’s occasion was a terrific success. We had a great turnout, and everyone had a lot of fun in a wonderfully warm and friendly spirit. This is not to be missed! Please mark the date Thursday night, October 5 in your calendars. It’s an opportunity to meet up, connect with old friends and new neighbours, and enjoy a great

meal and an entertaining trivia competition, and at no cost to you!

The end of October will see a flurry of activity. Housing First, the owners and managers of the new social housing building on Galada Ave, are planning to host a community event to showcase the new complex and welcome new residents. That will be on Saturday, October 28 – more details next month as they come to hand.

The following morning on Sunday, October 29, provided our grant application is successful, PGRA will hold a Children’s Week event. That’s to be confirmed but pencil it in for the moment.

However, there will certainly be a Halloween party for kids on the evening of Tuesday, October 31 in Cade Square. Scary fun!

We’ll round out the year with a multi-cultural community event in early December.

What we want to do with this string of events is to bring Parkville Gardens people together, develop our sense of community, make the neighbourhood a welcoming and hospitable place, and share ideas about how it can be an even better place to live.

You can make suggestions any time by contacting me at president@pgra.org.au.

We’re especially interested in your views about traffic management in the area. Let us know what you think. ●



Tom Knowles

TOM KNOWLES IS THE PRESIDENT
OF PARKVILLE GARDENS
ASSOCIATION.
PRESIDENT@PGRA.ORG.AU

Quiz



1. What was Sri Lanka formally known as?
2. The works of Vincent van Gogh primarily belong to which art movement?
3. What category of the Victorian architecture awards did the Australian Nursing and Midwifery Federation building take out?
4. In which year did the Korean War begin?
5. What does the word stimming refer to?
6. *Normal People* and *Beautiful World, Where Are You?* are novels by which Irish author?
7. North Melbourne's Community Toy Library has reopened, when did it open again and under whose management?
8. Footballer Harry Kane plays for which English Premier League team?
9. The large property on which the heritage-listed St Mark the Evangelist Uniting Church sits has been sold; how old is the church?
10. Which of Shakespeare's plays is the longest?
11. Before receiving the name North Melbourne in 1877, what was the suburb called?
12. In 1902, who became the first 'Lord Mayor' (pictured) of Melbourne?

QUIZ SOLUTIONS

1. Ceylon 2. Post-Impressionism 3. Sustainable architecture 4. 1950 5. Self-stimulating behaviours, such as repetitive movements and sounds 6. Sally Rooney 7. July 17, and City of Melbourne 8. Tori Henham Horspur 9. 170 years old 10. *Hamlet* 11. Hotham 12. Sir Samuel Gill

5x5

No. 027

Insert the missing letters to make 10 words – five reading across the grid and five reading down.

A		O		E
	O		E	
D		O		D
	U		G	
E		E		D

SOLUTIONS

AFORE, DOZEN, DROID, LUNGE, EMEND.

PUZZLES AND PAGINATION
©PAGEMASTERS PTY LTD
PAGEMASTERS.COM

August, 2023

Sudoku

No. 026

Fill in the blank cells using the numbers from 1 to 9. Each number can only appear once in each row, column and 3x3 block

EASY

		7	9	6			1	
2		8						3
	9				7		4	
			6			8		
5		6	1	8	3	7		4
		9			2			
	3		2				6	
9						3		7
	7			3	9	2		

HARD

5			1		6	3		
						7	6	
			8	7				
9	2						8	1
		1		5		2		
4	7						3	5
				1	4			
	9	3						
		6	5		9			7

SOLUTIONS

EASY

1	9	2	6	8	3	4	7	5
2	8	9	1	4	2	7	5	6
3	9	4	5	7	2	1	1	3
4	7	3	8	1	9	2	6	8
5	6	1	2	5	6	1	3	9
6	2	2	4	8	3	5	2	6
7	1	8	9	7	4	4	4	9
8	4	7	2	2	8	3	5	2
9	3	7	7	4	1	6	7	1
0	2	7	7	9	6	8	5	1

HARD

1	2	1	6	3			8
9	5	4	2	8	7	3	6
8	6	8	7	1	1	9	2
5	3	6	1	9	2	8	7
4	7	7	2	2	6	1	3
1	1	8	9	7	4	4	9
6	1	1	8	3	5	2	6
6	1	1	8	3	5	2	6
3	7	4	4	4	4	1	6
2	7	7	9	6	8	5	1
3	4	7	6	8	5	1	2

Secret message: Universe

Crossword

No. 026

ACROSS

- 1 Counter-intelligence (9)
- 6 Employer (colloq) (4)
- 10 Separates with a sieve (5)
- 11 Decision-making group (9)
- 12 Denial (8)
- 13 Duds (coll) (6)
- 15 Pitfall (4)
- 16 Huge statues (10)
- 19 Artists who embrace post-classical styles (10)
- 21 Circle of light (4)
- 22 Variety of nut (6)
- 24 Plane hubs (8)
- 27 Bandit (9)
- 28 Fraudulent schemes (5)
- 29 Appendage (4)
- 30 Sponsor (9)

1	2	3	4	5	6	7	8
					9		
10			11				
					13		
12						14	
15			16			17	18
19		20				21	
22	23		24		25		
			26				
27						28	
29			30				

- 10 Refuge (7)
- 14 Lucky (10)
- 17 Methods of travel between floors (9)
- 18 Husbands or wives (7)
- 20 Staggered (6)
- 22 Military student (5)
- 23 Japanese dish (5)
- 25 Sat (5)
- 26 Italian meat-based sauce (4)

DOWN

- 2 Protect (9)
- 3 Implant (5)
- 4 Cemetery (10)
- 5 Courageous (4)
- 7 Surpass (5)
- 8 Appears to be (5)
- 9 Apple drinks (6)

SOLUTION

E	S	I	D	I	S	B	N	S	L	I	V	A
A	E	N	G	H	D	H	E					
S	W	O	S	O	D	E	D	S	E	D		
M	O	L	I	F	I							
S	I	R	O	P	R	I	V					
P	I	N	S	E								
O	L	I	S	I	N	H	E	R	O	W		
P	I	L										
S	E	S	S	O	R	T	O	R				
N	O	W	E	L	E	N	O	T	I			
W	O	D	E	H	E							
E	L	I	T	I	W	O	O					
A	N	E	A	C								
E	S	P	I	N	A	R	E					

Codeword

No. 026

10	14	14	15	9	10	23	15	17		12	9	19	
14		4		23		18		8		17		16	
1	5	14		3	23	19	5	14	7	9	2	17	
12		18			14		3			12		12	
T	17	17	T	16		3	17	9	12	10	17	12	
17				9		17		18		11			
5	17	19	23	20	17		6	23	18	8	10	17	
		10		20		D		9				21	
24	11	23	18	23	18	17		19	16	17	9	20	
11		3		18		3				13		17	
9	3	9	4	17	3	17	18	T		23	14	18	
22			T		12		9		11		18	12	
22	14	17			12	13	18	9	8	14	8	11	17

SOLUTIONS

J	K	H	E	N	C	P	X	F	I	O	D	L
35	34	33	32	31	30	29	28	27	26	25	24	23
13	12	11	10	9	8	7	6	5	4	3	2	1

9-Letter

No. 026

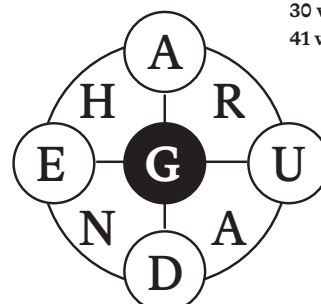
Today's Focus:

20 words: Good

30 words: Very good

41 words: Excellent

Using the nine letters in the grid, how many words of four letters or more can you list? The centre letter must be included and each letter may only be used once. No colloquial or foreign words. No capitalised nouns, apostrophes or plural words ending in "s".



SOLUTIONS

aged, agar, aged, agenda, ague, angler, argue, argued, angler, danger, danger, dang, dung, egad, gander, garden, gear, gerund, grad, grade, grand, guard, guard, hang, hangar, harangue, HARANGUED, huge, hung, hunger, nudgy, rag, rage, raged, rang, range, ranged, rung, urge, urged

Reference:

Collins Concise English Dictionary

What's On: August 2023

Community Calendar



SAT 26 AUG | 7.30PM - 8.30PM

REST IS RESISTANCE: A KEYNOTE

A call to action and manifesto for those who are sleep deprived, searching for justice, and longing to be liberated from the oppressive grip of grind culture.

Arts House
521 Queensberry St, North Melbourne
nowornever.melbourne.vic.gov.au



SAT 19 AUG | 7.30PM-9.30PM

AN UPRISING OF DREAMS

An immersive art intervention of sound healing, projection art, guided meditation, and collective rest led by Nap Bishop, Tricia Hersey.

Arts House
521 Queensberry St, North Melbourne
nowornever.melbourne.vic.gov.au

EVERY TUESDAY, 10:30AM - 11:15AM

PRESCHOOL STORYTIME

Share the wonder of books with your preschooler at storytime, with stories, songs, rhymes, and activities.

North Melbourne Library
66 Errol Street



Mortal Kombat Tournament

Try your hand at becoming Bonehead's Mortal Kombat Champion at the inaugural arcade tournament.

Bonehead Brewing - 86 Parsons St Kensington 3031

boneheadbrewing.com.au/pages/upcoming-events



EVERY THURSDAY, 10:30AM - 11AM

STOMPERS

Come along for an energetic 30 minutes of stories, songs, rhymes, music, and most of all, fun. Ages 18 months to 3 years.

North Melbourne Library
66 Errol Street



SECOND MONDAY OF EVERY MONTH (UNLESS PH), 1:45PM - 3:45PM

ORGAN CLUB

Fun and entertaining musical afternoon, with music to suit all tastes. Afternoon tea to follow. \$8 incl afternoon tea.

Contact: 9307 8207.

Kensington Neighbourhood House

Sat 19 Aug | 7.30pm-12am

Kali Malone x Grand Organ + MESS Synthesiser Orchestra led by STATHIS//DAVEY//KIM

Melbourne Town Hall - Main Hall
90/130 Swanston St, Melbourne
nowornever.melbourne.vic.gov.au



AUGUST TO NOVEMBER

CONNECT CAFE: TECH I.T HELP

If 55+, learn new skills on your mobile or computer through the tech topic workshop (10am to 12pm) or an individual one-hour session (9am to 12pm) - alternating weeks. Light morning tea provided. Book: healthyageing@melbourne.vic.gov.au - **Jean McKendry Neighbourhood Centre (Mon) 9328 1665, Kensington Neighbourhood Centre (Fri) 9376 9743**

EVERY THURSDAY, UNTIL NOV 30

CHATTY CAFE

From 1pm to 3pm, enjoy having a chat, doing puzzles, arts and craft, reading newspapers, playing games, or receiving tech help. Afternoon tea provided.

Book: (03) 9376 9743

Kensington Neighbourhood Centre

Business Directory

Health & Fitness

Precinct

School

Tree Services

Politician

Real Estate



IN BRIEF

GET THE FACTS ON THE VOICE

Learn about the Aboriginal and Torres Strait Islander Voice to Parliament and the upcoming referendum. We're committed to truth-telling and supporting respectful conversations. Visit melbourne.vic.gov.au/voice

CHILDCARE CENTRES VIRTUAL TOUR

Find a childcare centre that suits your child and family's needs by taking a virtual tour. Go to melbourne.vic.gov.au and search Lady Huntingfield Early Learning and Family Services and North Melbourne Children's Centre to take a tour and learn more about our childcare options. Both our centres are accepting registrations for children aged from 0 to 5 years.

COMMUNITY MEALS SUBSIDY PROGRAM

Our Community Meals Subsidy Program provides funding to not-for-profits in the City of Melbourne to create connections for older people through food. A subsidy of \$6 per meal is available to eligible organisations. Applications close Thursday 31 August at 5pm. Visit melbourne.vic.gov.au/communitymeals for more.

DIGITAL PERMITS

Applications for busking permits and other business permits are now online, making it easier for you to do business with the City of Melbourne. Smart tech gives you 24-hour access to apply for permits, get copies of permits and invoices, and ask for changes. Visit melbourne.vic.gov.au/permitsupport for more.

BOOST COVID PROTECTION

With the arrival of winter and waned immunity in the community, together we can take steps to protect ourselves and each other from COVID by getting a 2023 booster dose from a doctor or pharmacist. You can also collect free rapid antigen tests – visit melbourne.vic.gov.au/freecovidtests for details.

READ ALL ABOUT IT

Be the first to know what's happening in your local neighbourhood and across the City of Melbourne. Subscribe for regular updates, direct to your inbox. Visit melbourne.vic.gov.au/subscribe to sign up.

NEIGHBOURHOOD PORTALS

Say hello to your friendly neighbourhood partner and share ideas to make your community the best it can be. From historic Carlton to the glistening harbour at Docklands, each City of Melbourne neighbourhood needs different services and support. Reach out to your neighbourhood partner at participate.melbourne.vic.gov.au/neighbourhoods

Simpler parking in the CBD

The City of Melbourne is making kerbside parking simpler and fairer in the CBD by introducing cheaper rates for off-peak times, waiving fees for 15-minute parking sessions by using the EasyPark app and unlocking hundreds more spaces.

Work is underway to review and revise parking in every CBD street to install simpler signs and make sure loading zones and accessible (disability) spaces are in the right locations.

We're also introducing clear spaces in every street for passenger drop-off and pick-up, to reflect the changing ways people enter and exit the city.

All you need to do is check the signs to understand the parking conditions.

These CBD parking improvements will be complete early next year.

We'll soon be improving parking in other neighbourhoods across the municipality and will engage businesses and the community to understand what is needed so we get the balance right.

The changes are not 'set and forget', as we'll follow up to make sure the new parking conditions are working well.

This approach optimises public kerbside parking, which makes up only 5 per cent of all parking in the municipality. The remaining 95 per cent of parking is managed off-street in residential, private and public car parks.

We'll also continue working with off-street parking operators to make it easier to find and access the 68,000 public off-street parking spaces – so drivers can make the best choice for their time in the city.

Our new CBD parking plan was informed by the experience of about 1,000 parking users and does not propose any increase to the current maximum \$7 hourly parking rate.

Simpler signage and conditions will reduce confusion and could result in a 10 per cent decrease in parking fines.

To learn more about simpler CBD parking, visit melbourne.vic.gov.au/simplerparking

WHAT'S CHANGED?

- Simpler parking signs to reduce driver confusion
- Consistent 2-hour parking limits every day from 7am to 10pm, including Sunday
- Fairer, data-led pricing, with a new off-peak rate of \$4 per hour after 7pm weekdays and all weekend
- Introduction of off-peak rates on Sunday
- Free parking to support short stops of up to 15 minutes (when using the EasyPark app)
- Optimising underused spaces and converting loading zones to 2-hour parking after 4pm – making hundreds more parking spaces available in the evenings
- Consistent loading zone time limits for drivers to make deliveries, as well as disability parking and dedicated pick-up and drop-off spaces that are easier to find and use

NOW OR NEVER

THE SPECTACULAR PROGRAM FOR THE INAUGURAL
NOW OR NEVER FESTIVAL HAS DROPPED!

Taking over Melbourne from 17 August to 2 September,
the program features an art trail, projections, a 360°
pop-up dome cinema and a non-stop weekend of gigs.

GET YOUR TICKETS TODAY AT
nowornever.melbourne.vic.gov.au

